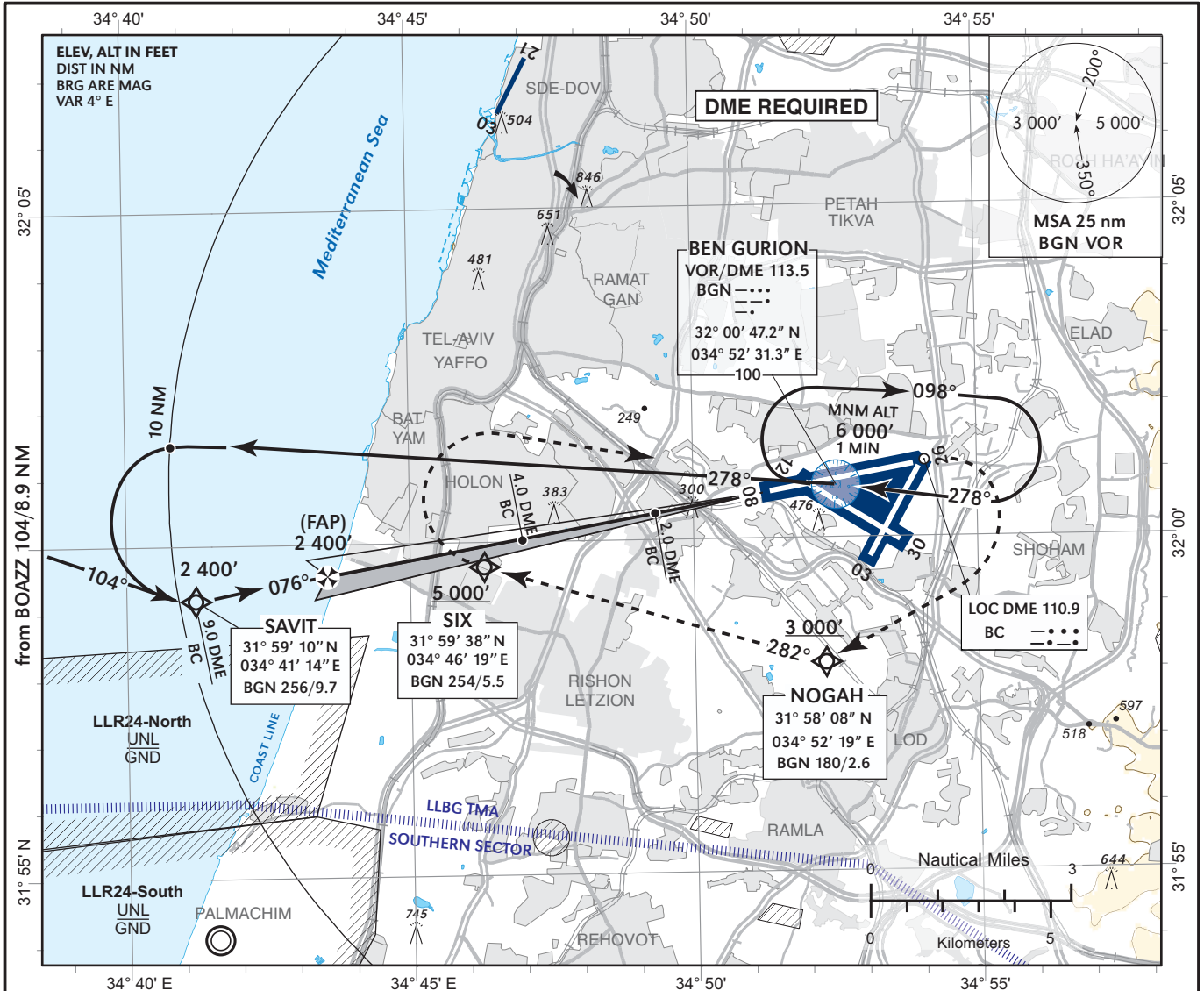


INSRUMENT
APPROACH
CHART

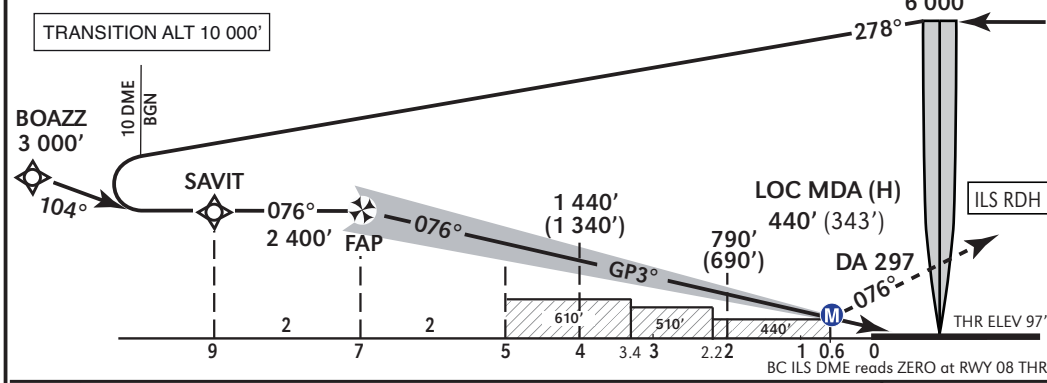
AERODROME ELEV **134 ft**
HEIGHTS RELATED TO
THR RWY ELEV **97 ft**

APP 120.50
TWR 134.60
TMA 119.50

TEL-AVIV / BEN-GURION
ILS RWY 08



BC ILS DME	5.0	4.0	3.0	2.0
ALT (HAT)	1 760' (1 660')	1 440' (1 340')	1 110' (1 010')	790' (690')



MISSED APPROACH:
This procedure requires a minimum climb gradient of 5.8%. If unable to comply, inform ATC.
RNAV ACFT: Climb straight ahead and maintain 2 000' until crossing BGN 1 DME outbound, then climb turning RIGHT to cross NOGAH at or above 3 000', SIX at or above 5 000', turn RIGHT to BGN VOR 6 000' and hold.
Non RNAV ACFT: Climb straight ahead and maintain 2 000' until crossing BGN 1 DME outbound, then climb turning RIGHT heading 240 and expect radar vectors to cross NOGAH at or above 3 000'

	OCA/H	Straight-in Approach				Circling		
		ILS DA (H) 297 (200)		LOC (GP INOP) MDA (H) 440 (343) ②		MAX KT	High terrain EAST of airport. Remain within BGN 3.8 DME ①	
A	240 (140)	FULL	ALS OUT	FULL	ALS OUT		MDA (H)	VIS
B	250 (150)					580 (446)	1600 m	
C	260 (160)	VIS / RVR 1200 m	VIS / RVR 1200 m	VIS / RVR 1200 m	VIS / RVR 1600 m	600 (466)	1600 m	
D	270 (170)					600 (466)	2400 m	
						700 (566)	3200 m	

Ground speed	KT	90	100	120	140	160	180
Rate of descent	FPM	477	530	636	742	850	955

- ① Note the circling limit refers to BGN VOR DME
- ② Cross BGN 7.1 DME not below 2 200