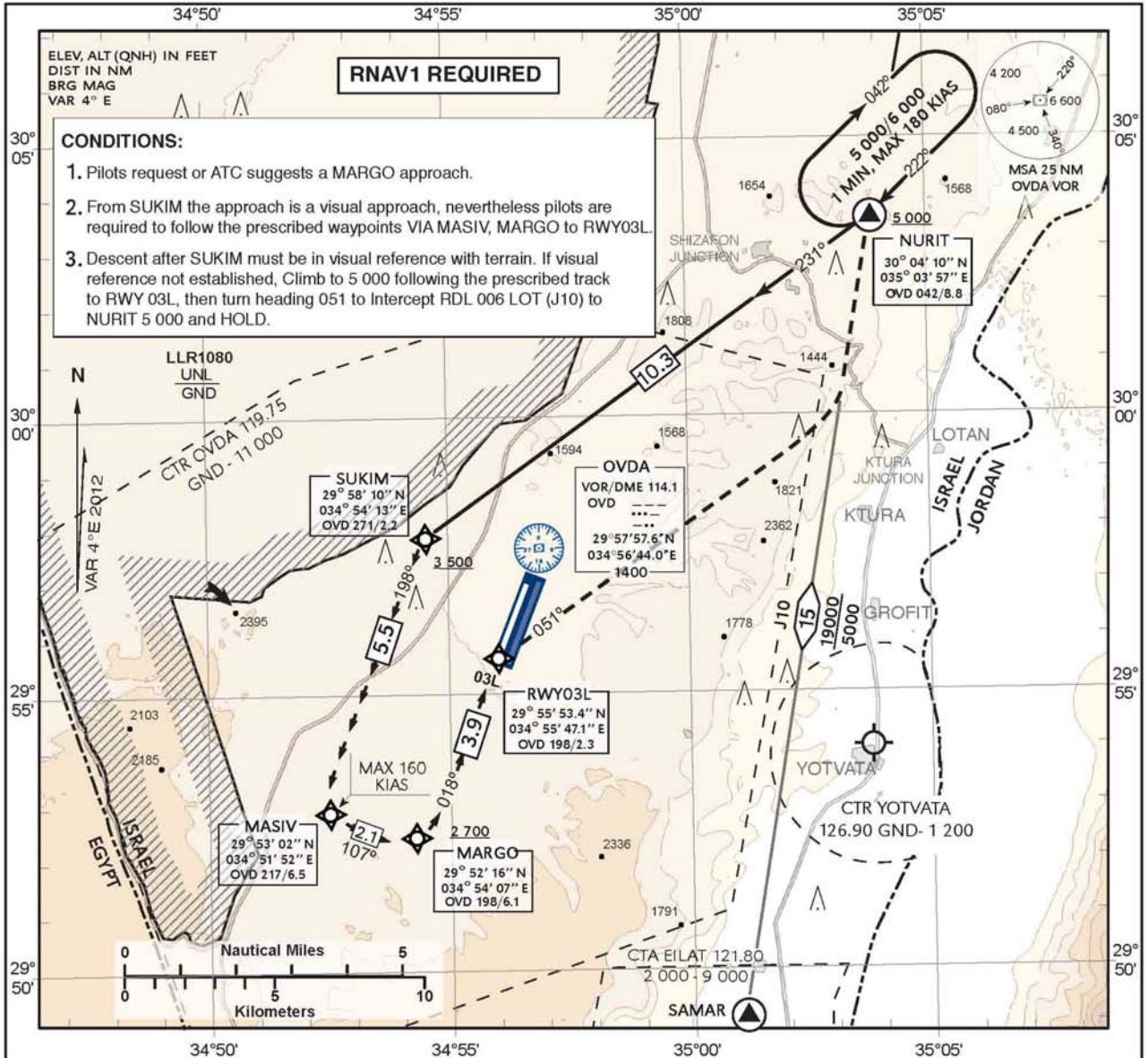


**VISUAL
APPROACH CHART**
(with prescribed RNAV track)

AERODROME ELEV **1483 ft**
THR RWY03L- ELEV **1483 ft**

TWR **119.75**
(MIL) **129.90**
ACC **120.90**

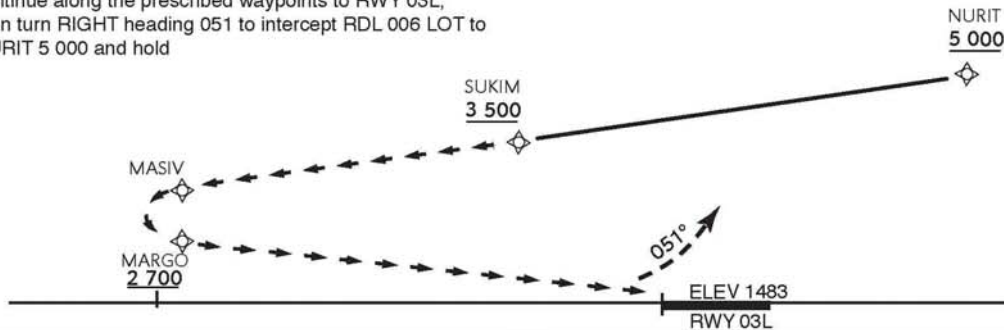
OVDA
MARGO APPROACH RWY 03L



- CONDITIONS:**
1. Pilots request or ATC suggests a MARGO approach.
 2. From SUKIM the approach is a visual approach, nevertheless pilots are required to follow the prescribed waypoints VIA MASIV, MARGO to RWY03L.
 3. Descent after SUKIM must be in visual reference with terrain. If visual reference not established, Climb to 5 000 following the prescribed track to RWY 03L, then turn heading 051 to intercept RDL 006 LOT (J10) to NURIT 5 000 and HOLD.

GO AROUND AFTER SUKIM:

continue along the prescribed waypoints to RWY 03L, then turn RIGHT heading 051 to intercept RDL 006 LOT to NURIT 5 000 and hold



CEILING - VISIBILITY	WPT	Recommended crossing alt
2 200 - 5 KM	MASIV	3 300
	MARGO	2 700