

STANDARD DEPARTURE
ROUTE - VISUAL

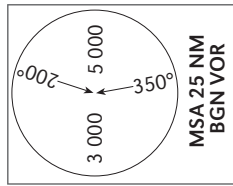
AD ELEV 43 ft

TWR (SDE DOV)	124.00
BEN GURION TMA	119.50
ACC (PLUTO)	118.40

TEL-AVIV / SDE-DOV

RWYs 03, 21

KANER 2A Departure Visual
KANER 2B Departure Visual



GENERAL INSTRUCTIONS

When accepting a visual departure, climb straight ahead, maintain VMC and own terrain separation until turning to **YAMIT**.
KANER 2A departure requires ceiling not below **800** and visibility to be no less than **800 m**.
KANER 2B departure requires ceiling not below **800** and visibility to be no less than **2000 m**.
These departures require a minimum climb gradient up to **5 500** as follows:
Take-off **RWY 21 - 350** per NM (5.7%)
Take-off **RWY 03 - 380** per NM (6.2%)

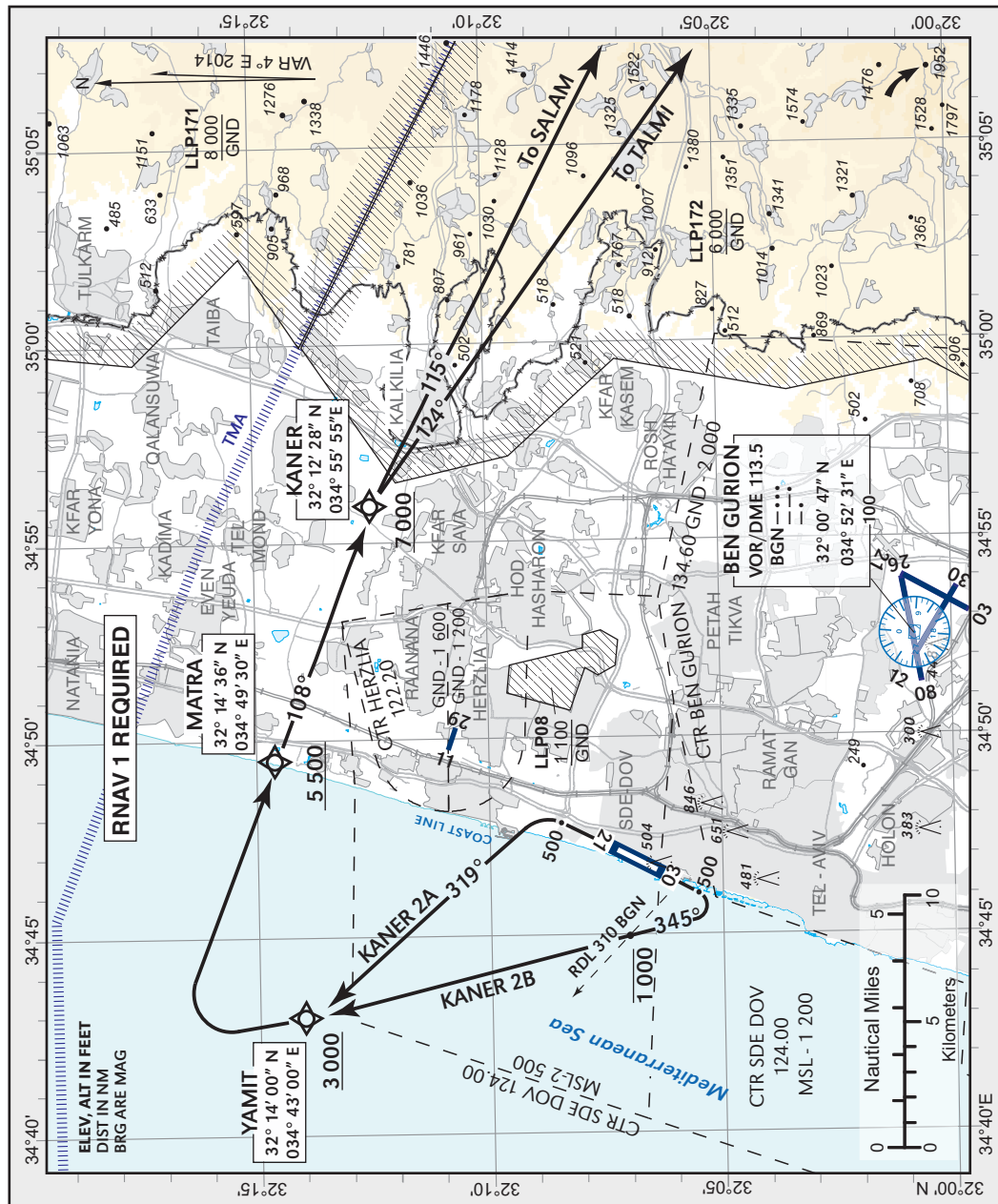
Ground speed	KT	90	110	130	150	180
RWY 03 - MNM ROC	FPM	570	700	825	950	1140
RWY 21 - MNM ROC	FPM	525	640	760	875	1050

COMMUNICATION FAILURE

- Select mode **A** code **7600**.
- After passing **SALAM / SIVAK** climb to **FPL** altitude.

SPEED RESTRICTION

Max **250 KIAS** below **10 000**



ROUTING / ALTITUDE

Cross **YAMIT** at or above **3 000**. Turn **RIGHT** to cross **MATRA** at or above **5 500**.
Cross **KANER** eastbound at or above **7 000**.
Continue, as per **ATC**, to **SALAM** or **TALMI**.

TAKE - OFF

Climb straight ahead, at **500** turn **LEFT** to **YAMIT**.
Climb straight ahead, at **500** turn **RIGHT** to **YAMIT**.
Remain below **1 000** until passing **RDL 310 BGN** northbound.

DEPARTURE RWY

KANER 2A	03
KANER 2B	21