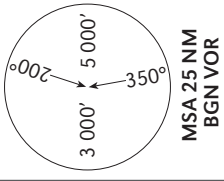


STANDARD DEPARTURE CHART
INSTRUMENT (SID)

TRANSITION ALTITUDE
10 000 FT

TWR 134.60
DEP 120.50
ACC 121.40

TEL-AVIV / BEN-GURION
RWY 08
PURLA 1B



PURLA DEPARTURE (WESTBOUND)
PURLA ONE BRAVO (PURLA 1B)

SPEED RESTRICTION
Max 250 KIAS below 10 000'
Unless otherwise cleared by ATC.

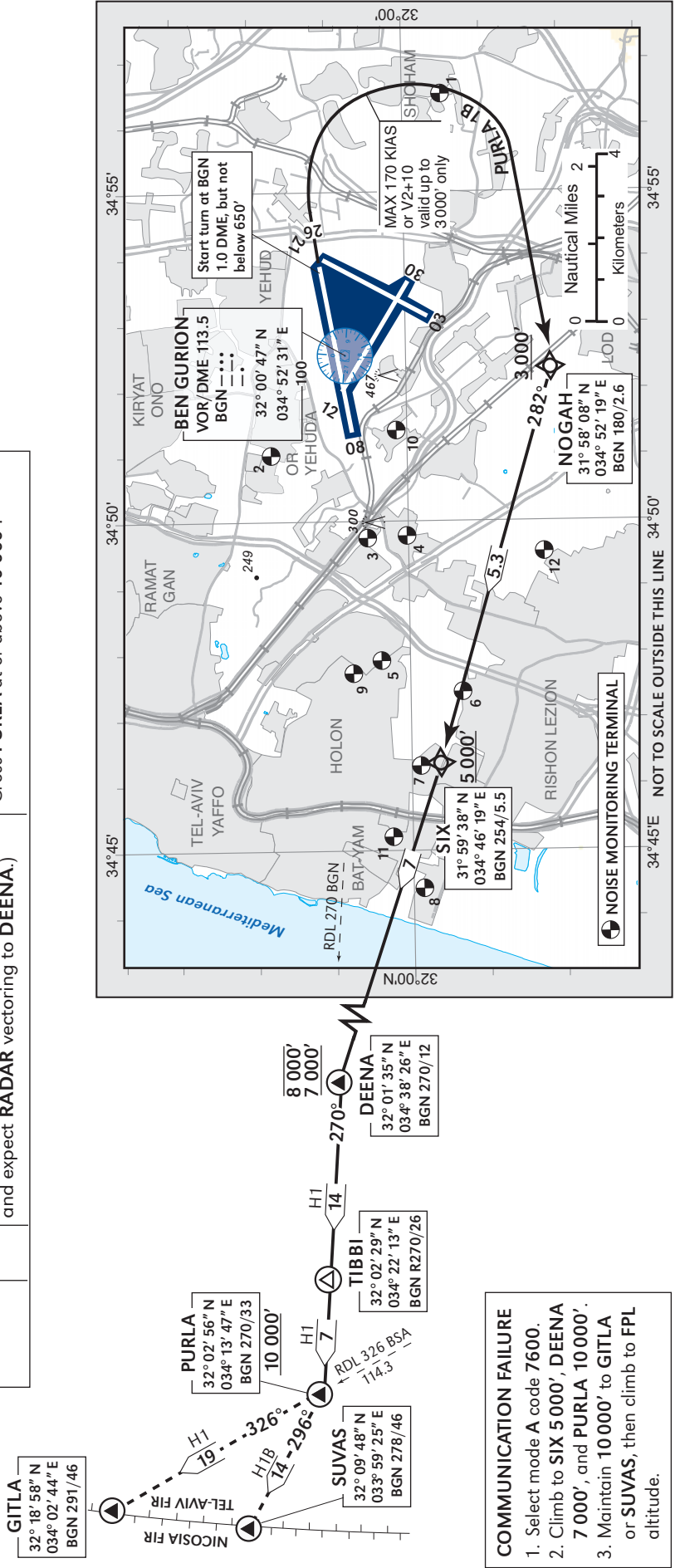
GENERAL INSTRUCTIONS

This SID includes noise preferential routes.
For speed limitations - see noise abatement (refer to LLBG AD 2.21).
As soon as practicable after take-off contact **Ben-Gurion Departure on 120.50 MHZ.**
This SID requires a minimum climb gradient of 270' per NM (4.4%) up to 5 000':

Ground speed	KTS	90	120	150	180	210
MNM ROC	FPM	410	540	680	810	950

If unable to comply, advise ATC before take-off.

SID	RWY	TAKE - OFF	ROUTING/ALTITUDE
PURLA 1B	08	Initial climb 5 000'. Climb straight ahead, at BGN 1.0 DME but not below 650', turn promptly RIGHT to NOGAH. (Non RNAV ACFT: turn RIGHT heading 240° and expect RADAR vectoring to DEENA.)	Cross NOGAH at or above 3 000' Cross SIX at or above 5 000' Fly to DEENA then to PURLA Cross DEENA between 7 000' and 8 000' Cross PURLA at or above 10 000'.



COMMUNICATION FAILURE

- Select mode A code 7600.
- Climb to SIX 5 000', DEENA 7 000', and PURLA 10 000'.
- Maintain 10 000' to GITLA or SUVAS, then climb to FPL altitude.

ELEV. ALT IN FEET
DIST IN NM
BRG ARE MAG
VAR 4° E