

TRANSITION ALTITUDE
10000 FT

TWR 134.60
DEP 120.50
ACC 121.40

TEL-AVIV / BEN-GURION
RWY 12
PURLA 2C

PURLA DEPARTURE (WESTBOUND)
PURLA TWO CHARLIE (PURLA 2C)

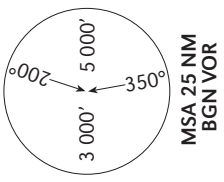
All SIDs include noise preferential routes.
For speed limitations - see noise abatement (refer to LLBG AD 2.21).
As soon as practicable after take-off contact Ben-Gurion Departure on 120.50 MHZ.

This SID requires a minimum climb gradient of 300' per NM (5%) up to 5 000'.

Ground speed	KT	90	120	150	180	210
MNM ROC	FPM	450	600	750	900	1050

If unable to comply, advise ATC before start-up.

SPEED RESTRICTION
Max KIAS 250 below 10 000' until crossing 7 DME west of BGN.



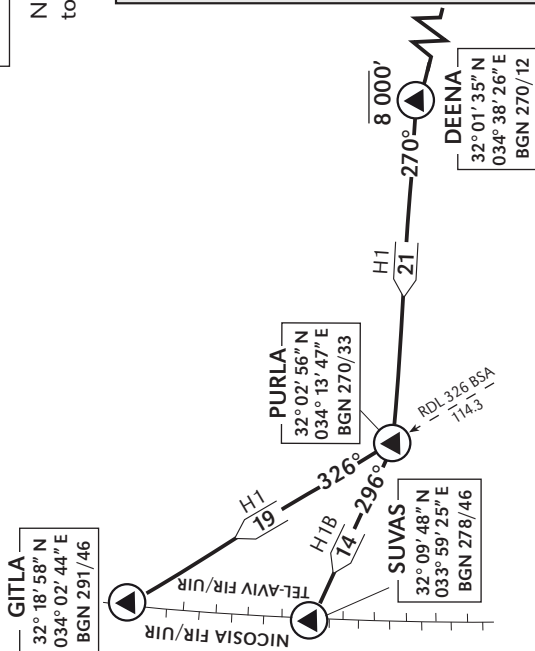
MSA 25 NM
BGN VOR

GENERAL INSTRUCTIONS

ELEV. ALT IN FEET
DIST IN NM
BRG ARE MAG
VAR 4° E

SID	RWY	TAKE - OFF	ROUTING/ALTITUDE	NOTES
PURLA 2C ①	12	After take-off turn RIGHT (not before BGN D1.2) to SIX via NOGAH.	Cross NOGAH at or above 2 200'. Cross SIX at or above 5 000' via DEENA to PURLA. Cross DEENA at or below 8 000'.	① ACFT that are Not RNAV equipped - advise ATC before start-up, and after take - off turn RIGHT 280° track and expect radar vectors to DEENA.

NOTE: Acceptance of clearance above 8 000' before crossing DEENA does not cancel the mandatory requirement to cross DEENA at or below 8 000'.



COMMUNICATION FAILURE

- Select mode A code 7600.
- Maintain 3 000' or climb as cleared by ATC until crossing BGN 7 DME then climb and maintain 8000' to GITLA or SUVAS via PURLA and 3. Climb to FPL altitude.

