

STANDARD DEPARTURE CHART  
INSTRUMENT (SID)

TRANSITION ALTITUDE NIL

TWR	134.60
DEP	120.50
TMA	119.50
ACC	120.90

TEL-AVIV / BEN-GURION

RWY 30, 26

LORIM 1F

LORIM 1E, LORIM 1F Special

LORIM DEPARTURES (EASTBOUND)  
LORIM ONE ECHO (LORIM 1E)  
LORIM ONE FOXTROT (LORIM 1F)  
LORIM ONE FOXTROT Special (LORIM 1F Special)

COMMUNICATION FAILURE

- Select mode A code 7600.
- Climb to cross BGN 6 DME eastbound at 6 000' or above.
- Maintain last assigned altitude until SIVAK and follow established procedure.

SPEED RESTRICTION

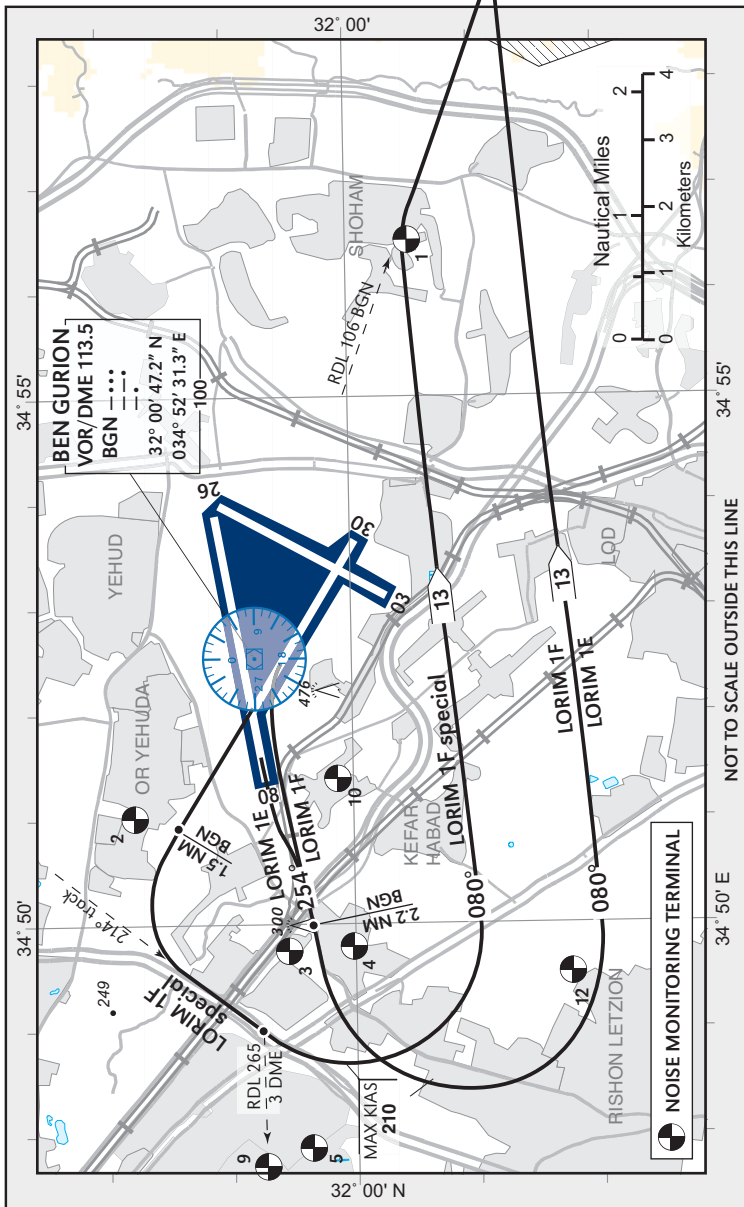
Max KIAS 250 below 10 000'

GENERAL INSTRUCTIONS

All SIDs include noise preferential routes.  
For speed limitations - see noise abatement (refer to LLBG AD 2.21).  
As soon as practicable after take-off contact Ben-Gurion Departure on 120.50 MHZ.  
These SIDs require a minimum climb gradient of 450' per NM (7.4%) up to 6000':

Ground speed	KT	90	120	150	180	210
MNMM ROC	FPM	675	900	1125	1350	1575

If unable to comply, advise ATC before start-up.



SID	RWY	TAKE - OFF	ROUTING/ALTITUDE	NOTES
LORIM 1E	26	At BGN 1.0 DME but not below 650' turn LEFT 080° track.	Intercept RDL 106 BGN. Cross BGN 6 DME eastbound at 6 000' or above and join ATS route J10.	1 If unable to comply, during the periods 0600-0800 & 1600-2300 local time request LORIM 1F special or RWY 26 and execute LORIM 1E.
LORIM 1F	30	As soon as practicable turn LEFT without traversing RWY 26 centerline, intercept RDL 254 BGN, not before 1 DME and not later than 2.2 DME turn LEFT, 080° track.		2 To be assigned only during the period 0600-2300 local time. This procedure shall not be used when the reported visibility is less than 1600 m.
LORIM 1F Special	30	Straight ahead, at BGN 1.5 DME turn LEFT, 214° track, when crossing RDL 265 BGN (3 DME), turn LEFT, 080° track.		To be assigned only during the period 0600-0800 & 1600-2300 local time.

CHANGE: Frequencies, designator