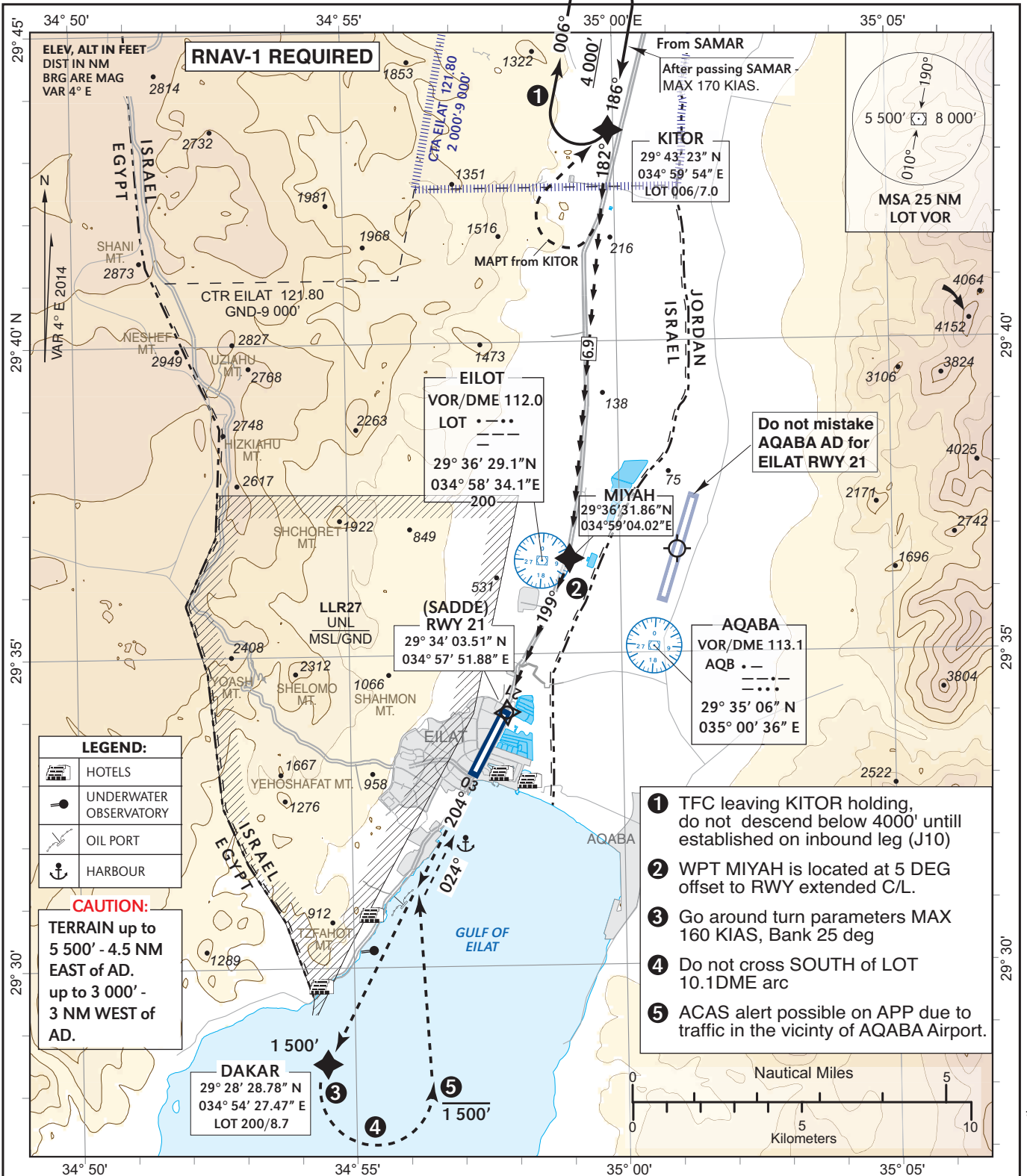


**VISUAL APPROACH CHART
(with prescribed
RNAV track)**

**AERODROME ELEV 43 ft
THR RWY 21 - ELEV 43ft**

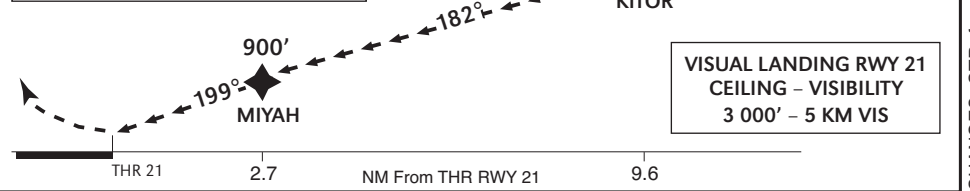
TWR	121.80
ACC	119.00
ACC	120.90

**EILAT
KITOR Y
APPROACH RWY 21**



CANCELED APPROACH/GO AROUND
on the visual segment of the approach (after passing KITOR): Continue along the prescribed track, at DAKAR turn LEFT at 1 500', to intercept RWY 03 extended CL, only after established on RWY 03 CL heading, climb to 3 000' via SADDE to KITOR and follow ATC instructions. IF unable to comply - maintain ALT and contact ATC.

MISSED APPROACH
If visual reference with terrain not established at KITOR, maintain heading, climb to 4 000', turn RIGHT and hold at KITOR.



CHANGES: CTR, frequencies, restricted area, routing