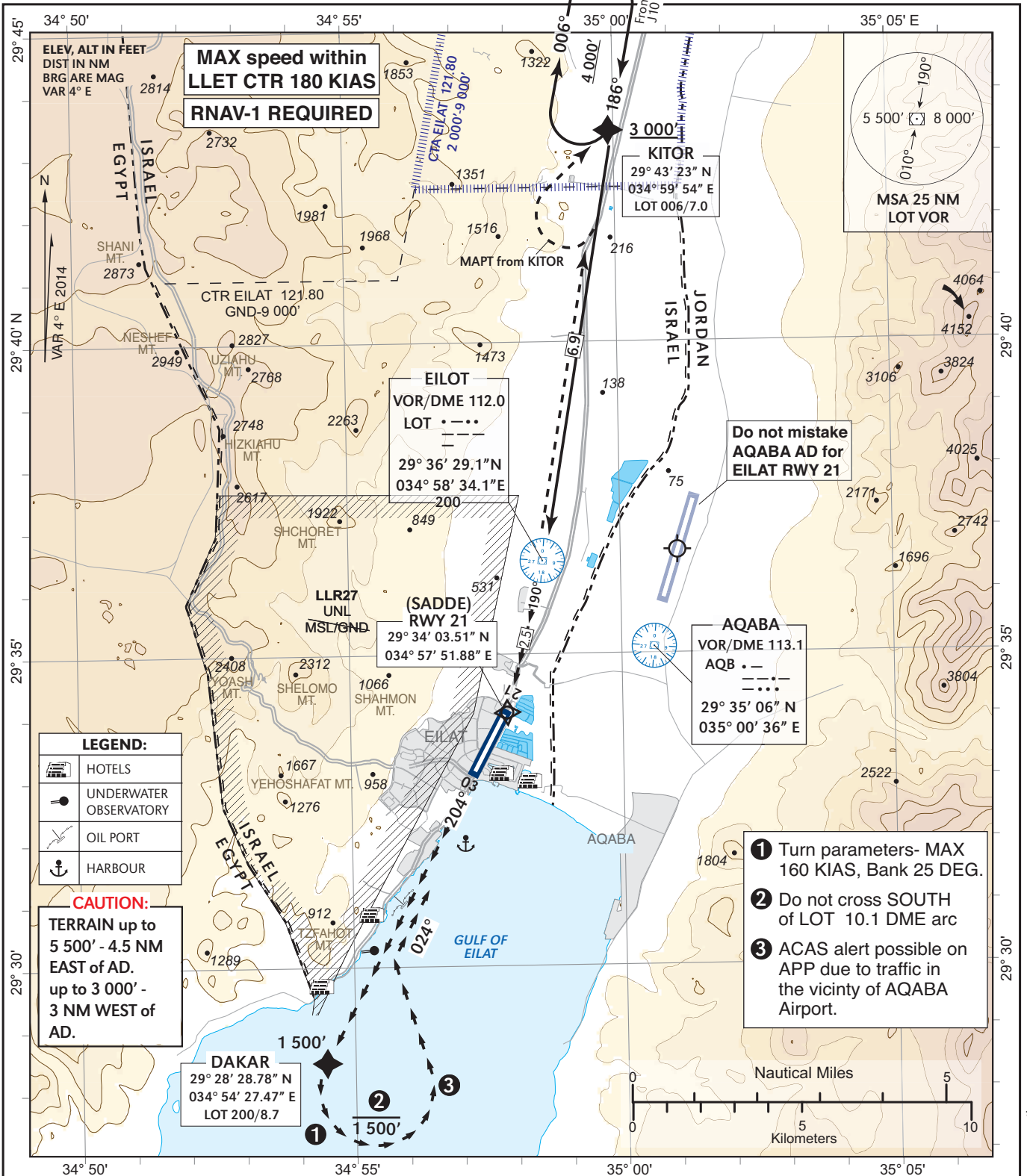


**VISUAL APPROACH CHART  
(with prescribed  
RNAV track)**

**AERODROME ELEV 43 FT  
THR RWY 03 - ELEV 16 FT**

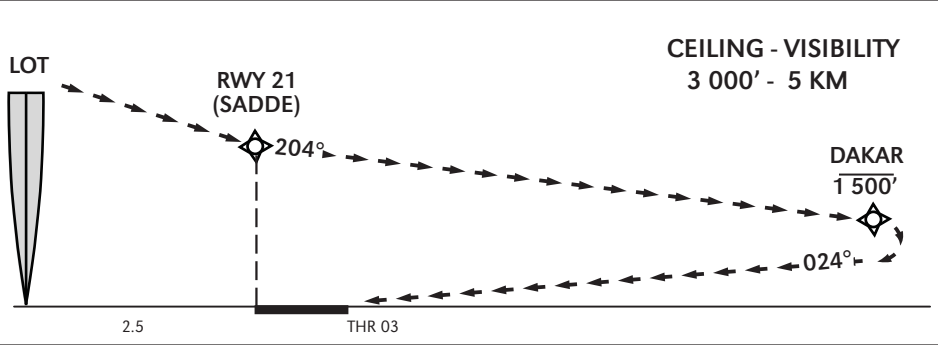
|            |               |
|------------|---------------|
| <b>TWR</b> | <b>121.80</b> |
| <b>ACC</b> | <b>119.00</b> |
| <b>ACC</b> | <b>120.90</b> |

**EILAT  
DAKAR APPROACH  
RWY 03**



**MISSED APPROACH (prior to KITOR):**  
If visual reference with terrain not established at KITOR, maintain 4 000', and hold at KITOR.

**CANCELED APPROACH/GO AROUND (after KITOR):**  
Continue along the prescribed track and heights, after joining final segment heading at 1 500', climb to 3 000' via THR 21 to KITOR and follow ATC instructions.  
IF unable to comply- maintain ALT and contact ATC.



CHANGES: CTR, frequencies, restricted area, routing