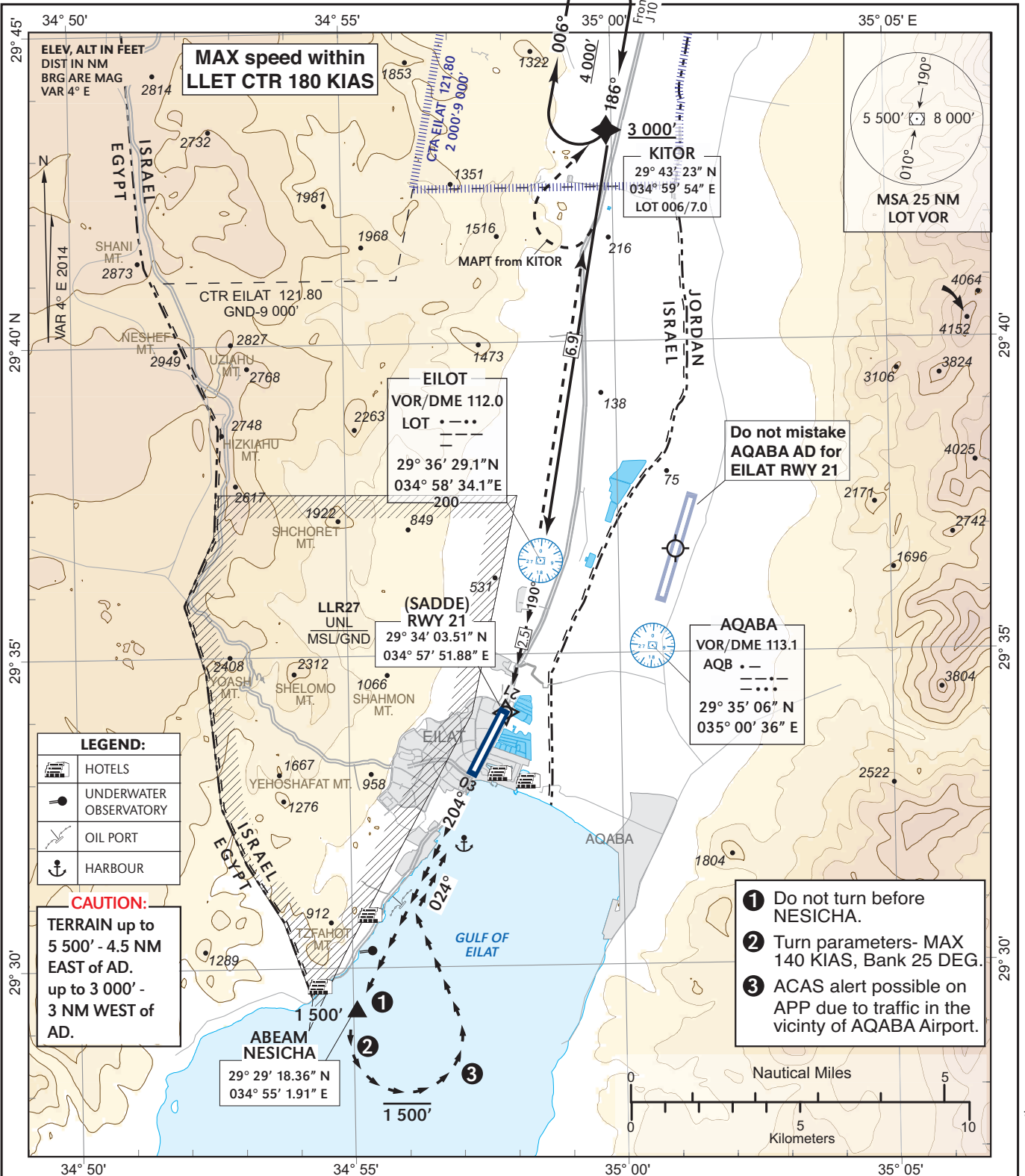


**VISUAL APPROACH CHART
(with prescribed track)**

**AERODROME ELEV 43 ft
THR RWY 03- ELEV 16 ft**

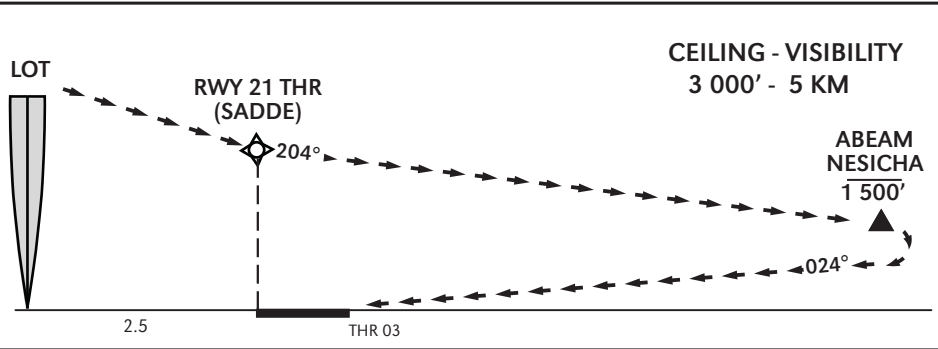
TWR	121.80
ACC	119.00
	120.90

**EILAT
NESICHA APPROACH
RWY 03**



MISSED APPROACH (prior to KITOR):
If visual reference with terrain not established at KITOR, maintain 4 000', and hold at KITOR.

CANCELED APPROACH/GO AROUND (after KITOR):
Continue along the prescribed track and heights, after joining final segment heading at 1 500', climb to 3 000' via THR 21 to KITOR and follow ATC instructions.
IF unable to comply- maintain ALT and contact ATC.



CHANGES: CTR, frequencies, restricted area, routing