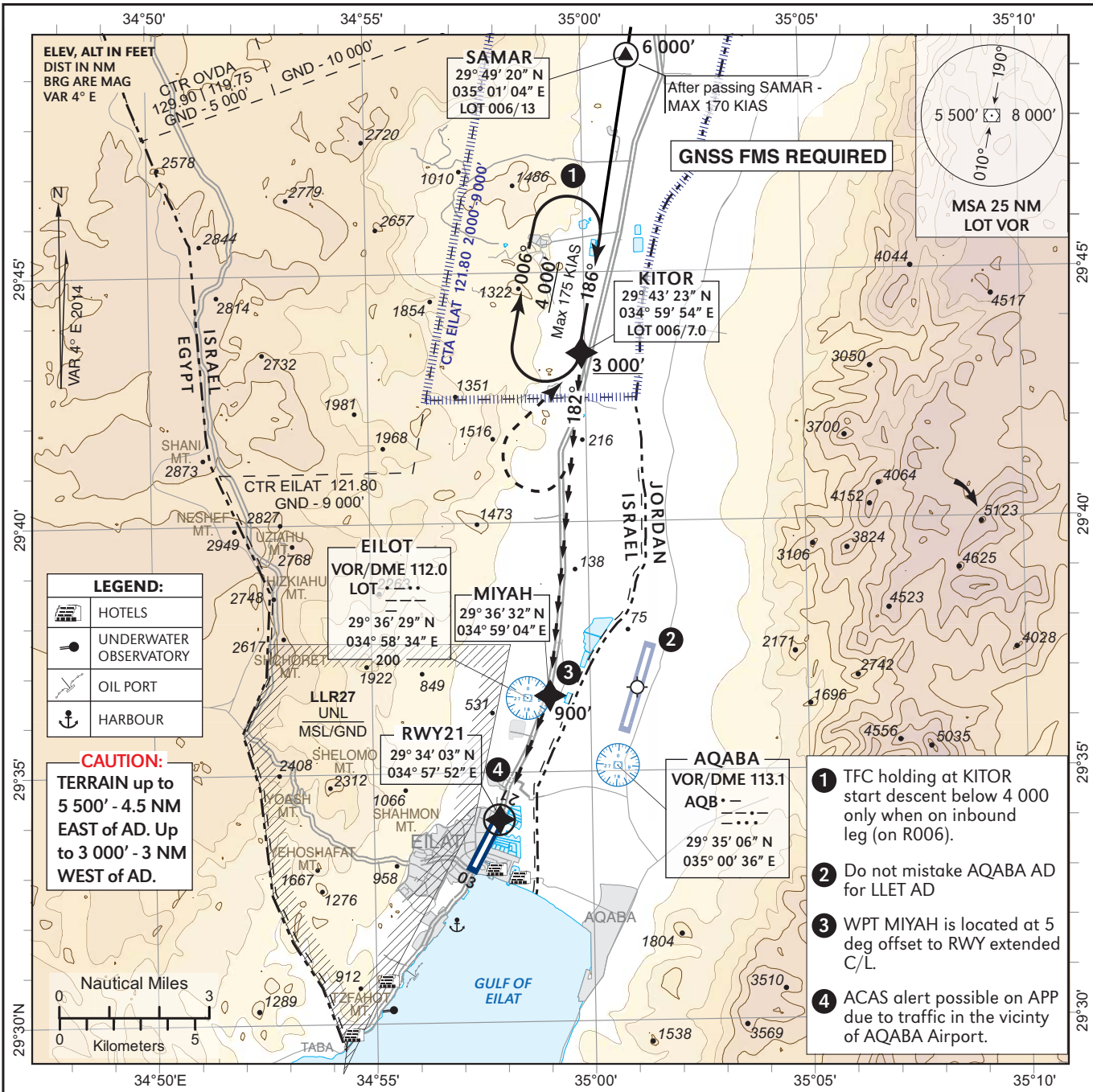


**VISUAL APPROACH CHART
(with prescribed RNAV track)**

**AERODROME ELEV 43 ft
THR RWY 21 - ELEV 43 ft**

ACC	120.90
TWR	121.80
	119.00

**EILAT
KITOR VISUAL RWY 21**



LEGEND:

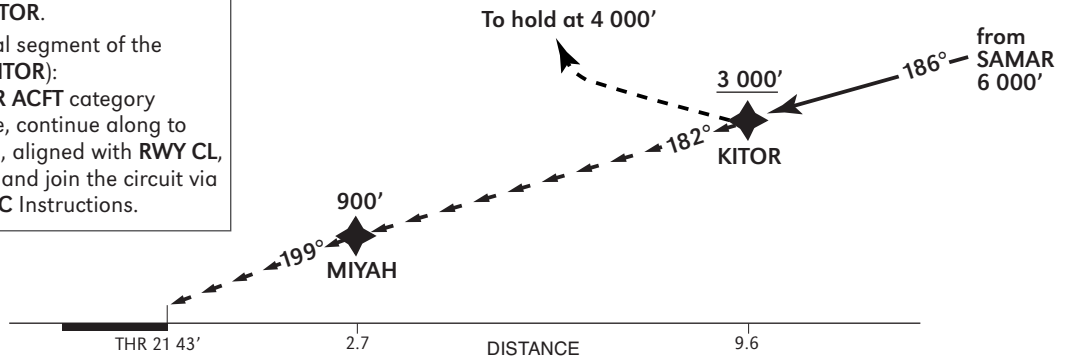
	HOTELS
	UNDERWATER OBSERVATORY
	OIL PORT
	HARBOUR

CAUTION:
TERRAIN up to 5 500' - 4.5 NM EAST of AD. Up to 3 000' - 3 NM WEST of AD.

- 1** TFC holding at KITOR start descent below 4 000 only when on inbound leg (on R006).
- 2** Do not mistake AQABA AD for LLET AD
- 3** WPT MIYAH is located at 5 deg offset to RWY extended C/L.
- 4** ACAS alert possible on APP due to traffic in the vicinity of AQABA Airport.

MISSED APPROACH
If visual reference with terrain not established at KITOR, maintain heading, climb to 4 000', turn **RIGHT** and hold at KITOR.

GO AROUND on the visual segment of the approach (after passing KITOR): Maintain or climb to **YOUR ACFT** category appropriate circuit altitude, continue along to prescribed track to **MIYAH**, aligned with **RWY CL**, continue on **RWY** heading and join the circuit via crosswind leg or as per **ATC** Instructions.



VISUAL LANDING RWY 21
CEILING - VISIBILITY
3 000' - 5 KM VIS

CHANGES: CTR, frequencies, restricted area, routing.