

STANDARD  
DEPARTURE CHART  
INSTRUMENT (SID)

TRANSITION ALTITUDE NIL

TWR	134.60
DEP	120.50
TMA	119.50
ACC	120.90

TEL-AVIV / BEN-GURION  
RWY 08  
SALAM 3B, TOMAL 3B,  
ESTER 1B, BIRIM 1B

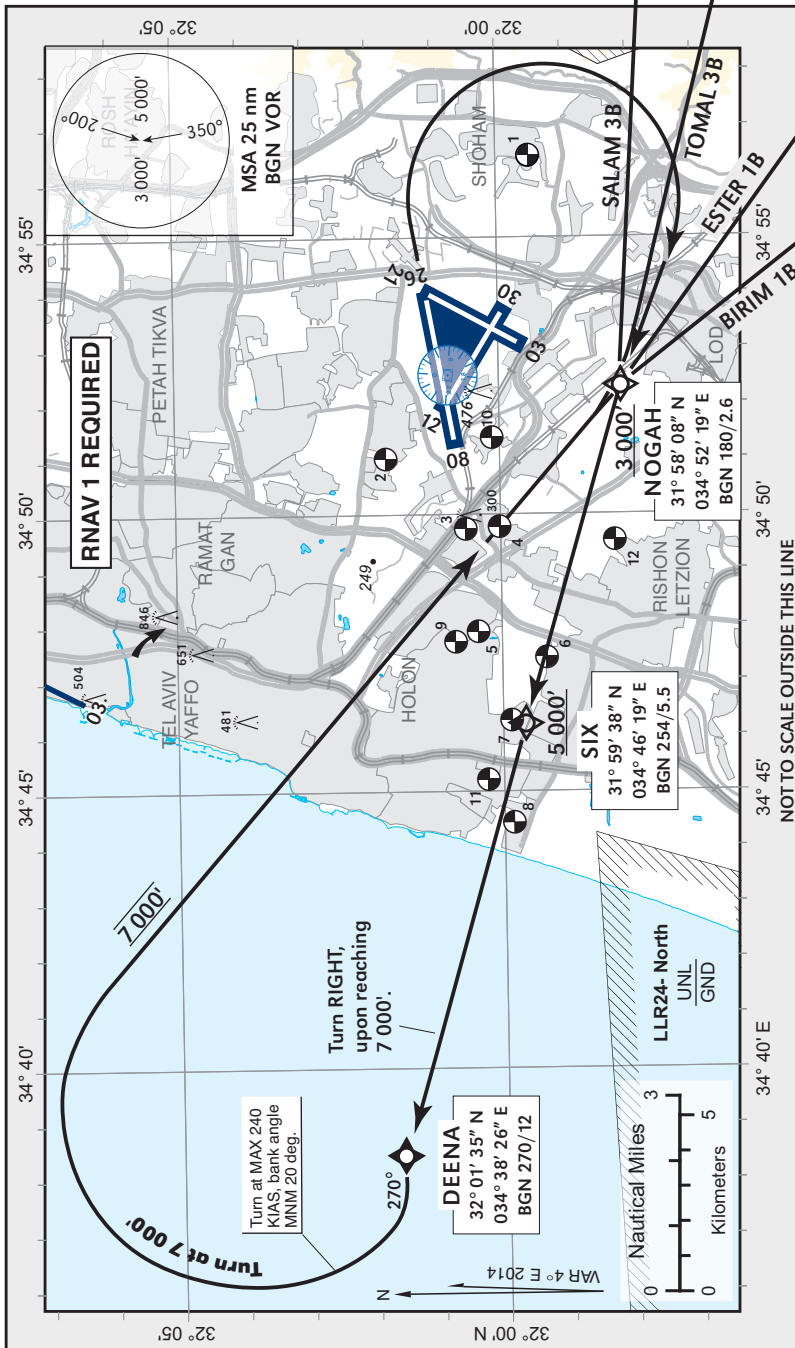
**SPEED RESTRICTION**  
Max KIAS 250 below 10 000'.

**GENERAL INSTRUCTIONS**

All SIDs include noise preferential routes. Speed limitations-see noise abatement (AIP LBG AD 2.21).  
As soon as practicable after take-off contact Ben-Gurion Departure on 120.50 MHz. these sids require a MNM climb gradient of 270' per NM (4.4%) up to 5 000'.

Ground speed	KT	90	120	150	180	210
MNM ROC	FPM	410	540	680	810	950

If unable to comply, advise ATC before start-up.



SID	RWY	TAKE - OFF	ROUTING/ALTITUDE
SALAM 3B		Initial climb 5 000'. Straight ahead, at BGN 1.0, but not below 650', turn RIGHT to Cross NOGAH at or above 3 000'.	Cross Six at 5 000' or above, towards DEENA, upon reaching 7 000' turn RIGHT to cross NOGAH at 7 000', maintain 7 000' to SALAM.
TOMAL 3B			Cross Six at 5 000' or above, towards DEENA, upon reaching 7 000' turn RIGHT to cross NOGAH at 7 000', maintain 7 000' to TOMAL via TALMI.
ESTER 1B	08		Cross Six at 5 000' or above, towards DEENA, upon reaching 7 000' turn RIGHT to cross NOGAH at 7 000', then climb to ESTER 9 000'.
BIRIM 1B			Cross Six at 5 000' or above, towards DEENA, upon reaching 7 000' turn RIGHT to cross NOGAH at 7 000', then climb to BIRIM 8 000'.

**COMMUNICATION FAILURE**

- Select mode A code 7600.
- After passing SALAM / TOMAL / ESTER / BIRIM climb to FPL altitude.