

STANDARD
DEPARTURE CHART
INSTRUMENT (SID)

TRANSITION ALTITUDE NIL

TWR	134.60
DEP	120.50
TMA	119.50
ACC	120.90

TEL-AVIV / BEN-GURION
RWY 12
SALAM 3C, TOMAL 3C,
ESTER 1C, BIRIM 1C

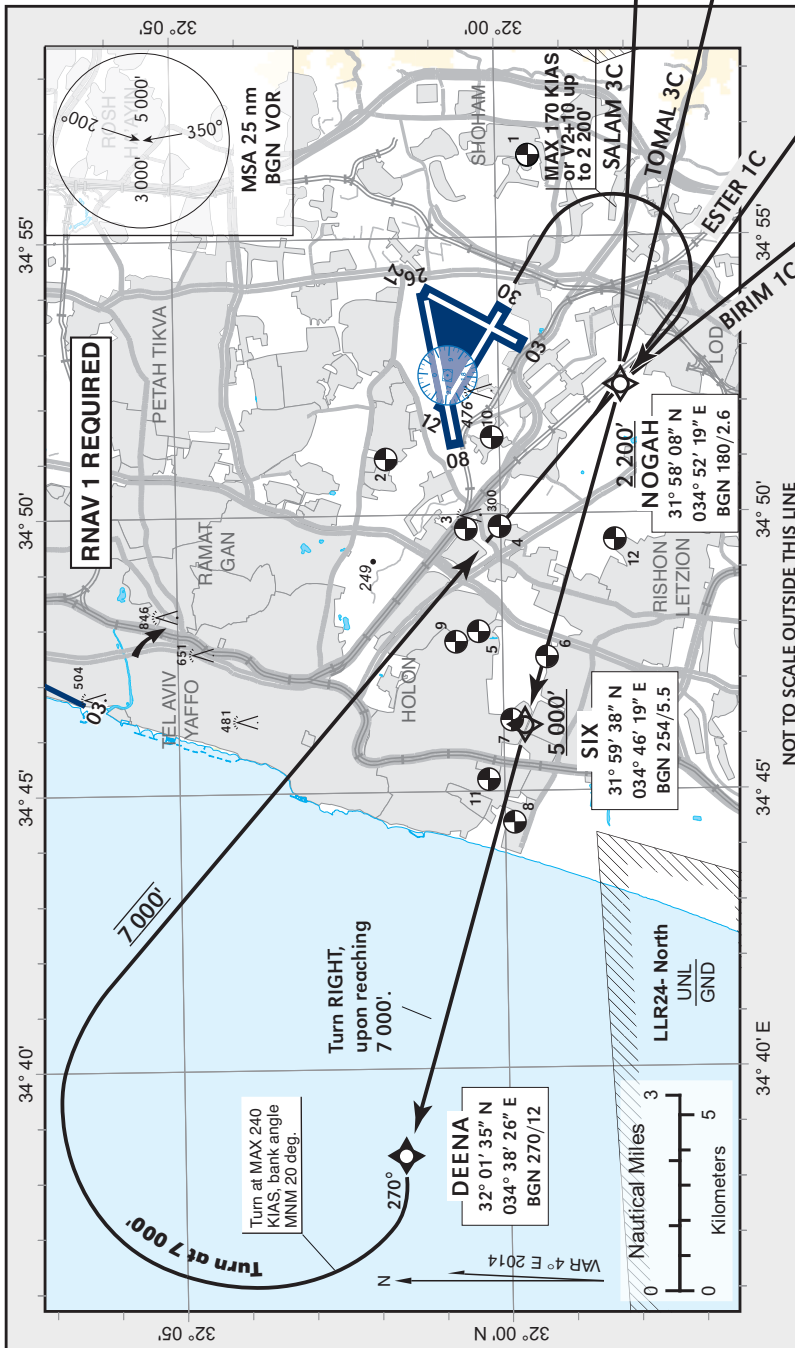
SPEED RESTRICTION
Max KIAS 250 below 10 000'.

GENERAL INSTRUCTIONS

All SIDs include noise preferential routes.
Speed limitations-see noise abatement
(AIP LLBG AD 2.21).
As soon as practicable after take-off contact
Ben-Gurion Departure on 120.50 MHZ.
these sids require a MNM climb gradient
of 300' per NM (5%) up to 7 000'.

Ground speed	KT	90	120	150	180	210
MNM ROC	FPM	450	600	750	900	1050

If unable to comply, advise
ATC before start-up.



COMMUNICATION FAILURE

- Select mode A code 7600.
- After passing SALAM / TOMAL / ESTER / BIRIM climb to FPL altitude.

SID	RWY	TAKE - OFF	ROUTING/ALTITUDE
SALAM 3C		Cross Six at 5 000' or above, towards DEENA, upon reaching 7 000' turn RIGHT to cross NOGAH at 7 000', maintain 7 000' to SALAM.	
TOMAL 3C		Initial climb 5 000'. Straight ahead, not before BGN 1,2, turn RIGHT to SIX. Cross NOGAH at or above 2 200'.	Cross Six at 5 000' or above, towards DEENA, upon reaching 7 000' turn RIGHT to cross NOGAH at 7 000', maintain 7 000' to TOMAL via TALMI.
ESTER 1C	12	Cross NOGAH at or above 2 200'.	Cross Six at 5 000' or above, towards DEENA, upon reaching 7 000' turn RIGHT to cross NOGAH at 7 000', then climb to ESTER 9 000'.
BIRIM 1C			Cross Six at 5 000' or above, towards DEENA, upon reaching 7 000' turn RIGHT to cross NOGAH at 7 000', then climb to BIRIM 8 000'.

ELEV. ALT IN FEET
DIST IN NM
BRG ARE MAG
VAR 4° E