

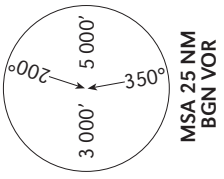
STANDARD DEPARTURE CHART
INSTRUMENT (SID)

TRANSITION ALTITUDE NIL

TWR	134.60
DEP	120.50
TMA	119.50
PLUTO	118.40

TEL-AVIV / BEN-GURION

RWY 30
NAT 3F
NAT 3F Special



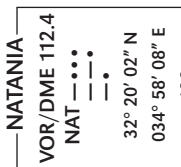
GENERAL INSTRUCTIONS

All SIDs include noise preferential routes.
For speed limitations - see noise abatement (refer to LBBG AD 2.21).
As soon as practicable after take-off contact **Ben-Gurion Departure** on **120.50 MHz**.
These SIDs require minimum climb gradients of **430'** per NM (7.1%) up to **3 000'**:

Ground speed	KT	90	120	150	180	210	240
MNM ROC	FPM	645	860	1075	1290	1510	1725

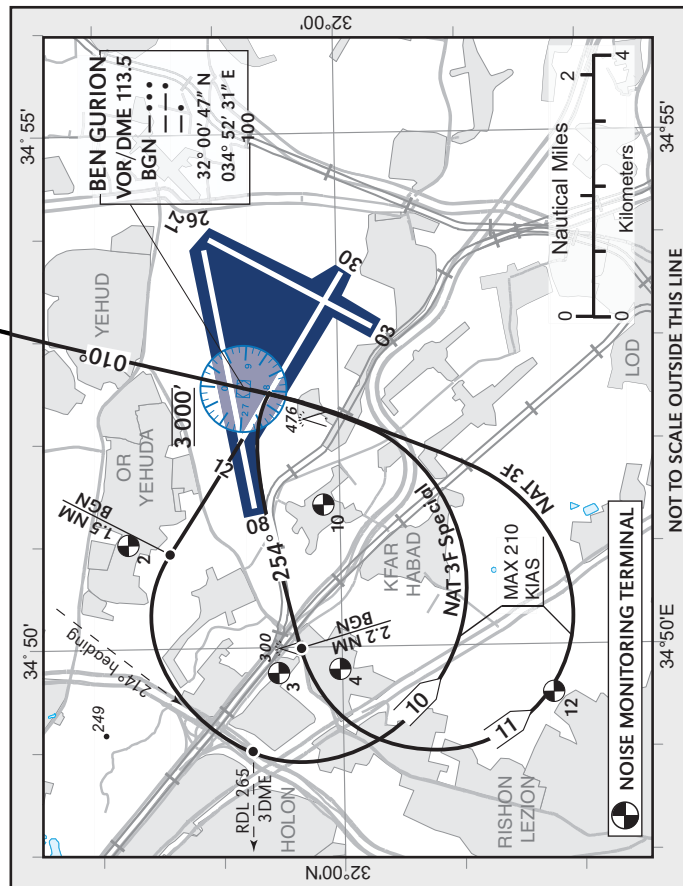
If unable to comply, advise **ATC** before start-up.

NATANIA DEPARTURES (NORTHBOUND)
NATANIA THREE FOXTROT (NAT 3F)
NATANIA THREE FOXTROT Special (NAT 3F Special)



SPEED RESTRICTION
Max 250 KIAS below 10 000'

COMMUNICATION FAILURE
1. Select mode A code 7600.
2. Climb to 4 000' to KANER, and
3. Climb to FPL altitude.



SID	RWY	TAKE - OFF	ROUTING/ALTITUDE	NOTES:
NAT 3F 1	30	As soon as practicable turn LEFT without traversing RWY 26, to intercept RDL 254° BGN. Not before 1.0 DME and not later than 2.2 DME turn LEFT, to cross BGN VOR at 3 000', northbound on RDL 010 BGN.	Cross KANER at 4 000', thence via NAT VOR onto J14 to DESHE or onto J15 to ATLIT.	To be assigned only during the period 0600-2300 local time. This procedure shall not be used when reported visibility is less than 1600m. If unable to comply, during the periods 0600-0800 & 1600-2300 local time, request NAT 3F special , or RWY 26 and execute NAT 3E .
NAT 3F Special 2	30	Straight ahead, at BGN 1.5 DME turn LEFT, heading 214° when crossing RDL 265° BGN (3 DME) turn LEFT, to cross BGN VOR at 3 000', intercept RDL 010 BGN northbound.		To be assigned only during the period 0600-0800 & 1600-2300 local time.