

STANDARD DEPARTURE CHART  
INSTRUMENT (SID)

TRANSITION ALTITUDE NIL

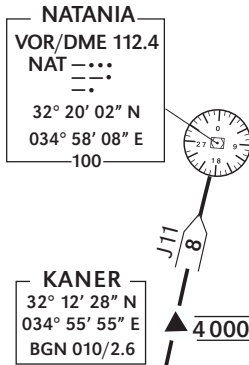
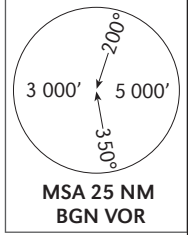
TWR 134.60  
DEP 120.50  
TMA 119.50  
PLUTO 118.40

TEL-AVIV / BEN-GURION

RWY 12  
NAT 3C

ELEV, ALT IN FEET  
DIST IN NM  
BRG ARE MAG  
VAR 4°E

NATANIA DEPARTURE (NORTHBOUND)  
NATANIA THREE CHARLIE (NAT 3C)



GENERAL INSTRUCTIONS

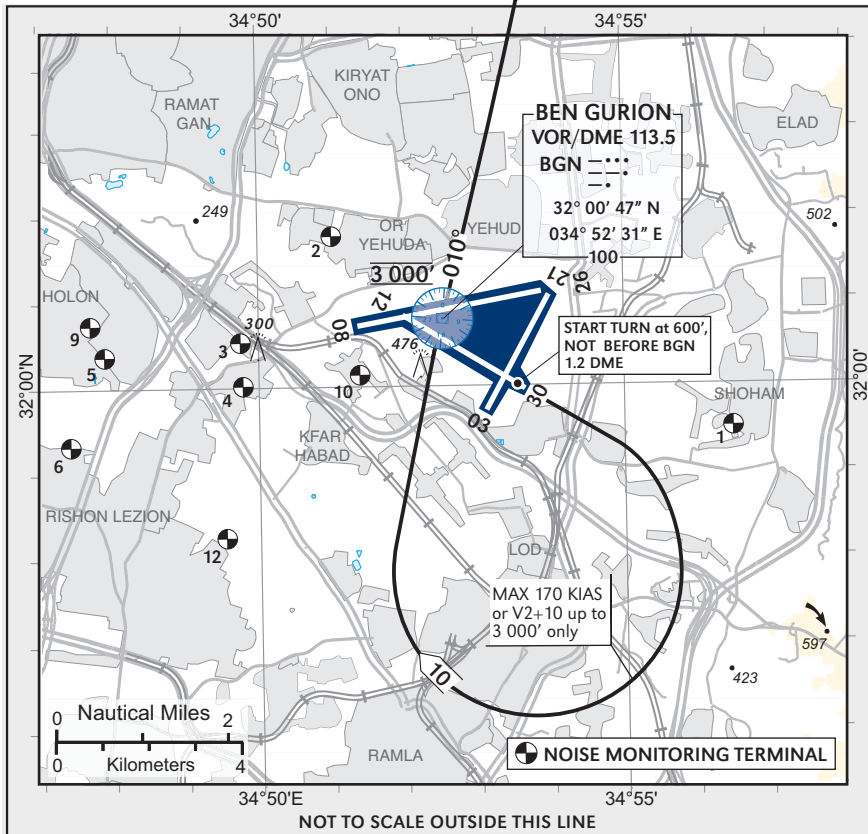
All SIDs include noise preferential routes.  
For speed limitations - see noise abatement  
(refer to LLBG AD 2.21).

As soon as practicable after take-off contact  
**Ben-Gurion Departure on 120.50 MHZ.**

This SID requires minimum climb gradient of:  
**300' per NM (5%) up to 3 000':**

Ground speed	KT	90	120	150	180	210	240
MNM ROC	FPM	450	600	750	900	1050	1200

If unable to comply, advise ATC before start-up.



**SPEED RESTRICTION**  
Max KIAS 250 below 10 000'

- COMMUNICATION FAILURE**
1. Select mode **A** code **7600**.
  2. Climb to **4 000'** to **KANER**, and
  3. Climb to **FPL** altitude.

SID	RWY	TAKE - OFF	ROUTING/ALTITUDE
NAT 3C	12	At 600', not before BGN 1.2 DME turn <b>RIGHT</b> and fly via <b>BGN VOR</b> at 3 000' northbound on <b>RDL 010 BGN</b> .	Cross <b>KANER</b> at 4 000', thence via <b>NAT VOR</b> onto <b>J14</b> to <b>DESHE</b> , or onto <b>J15</b> to <b>ATLIT</b> .