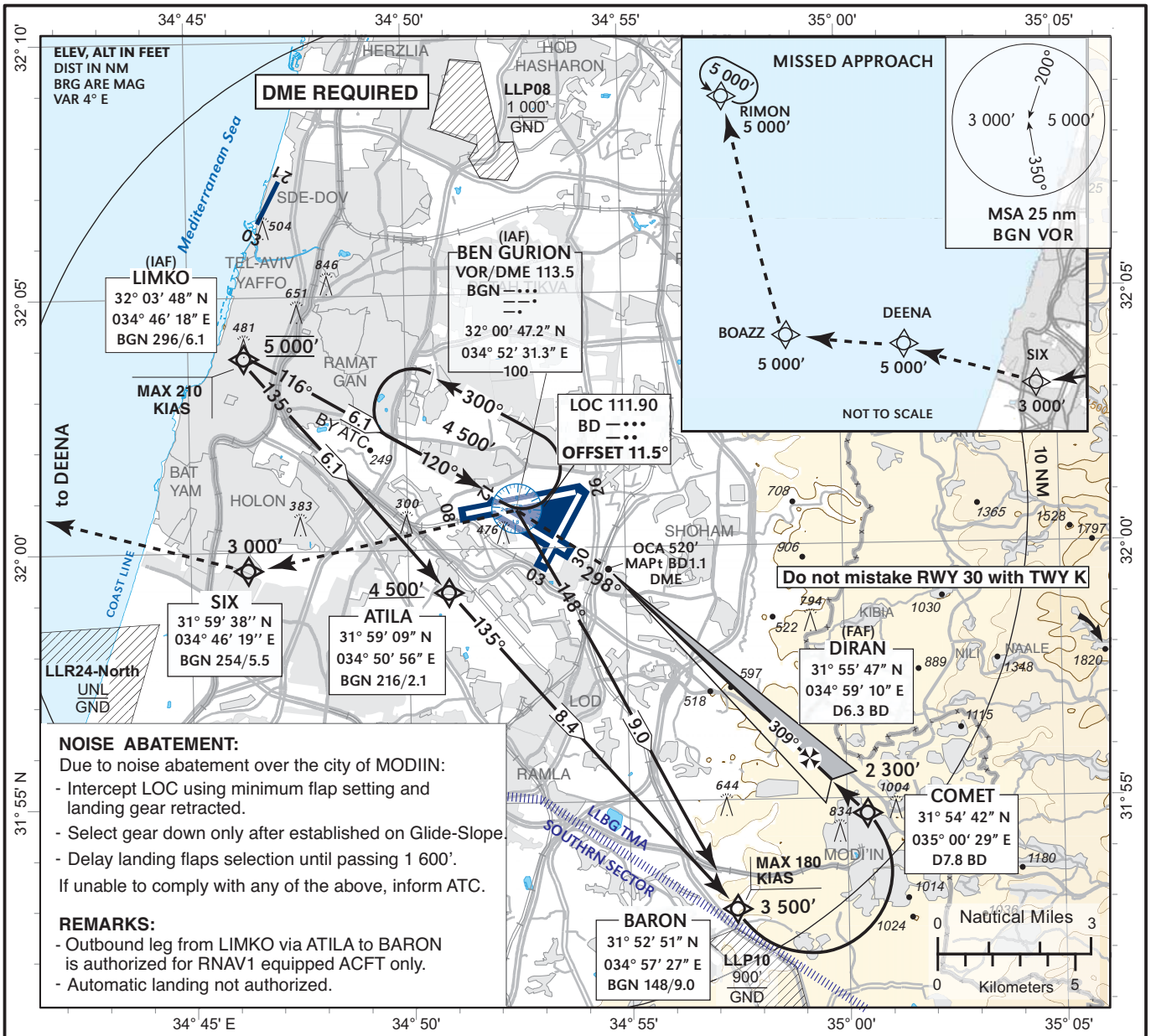


**INSTRUMENT  
APPROACH CHART**

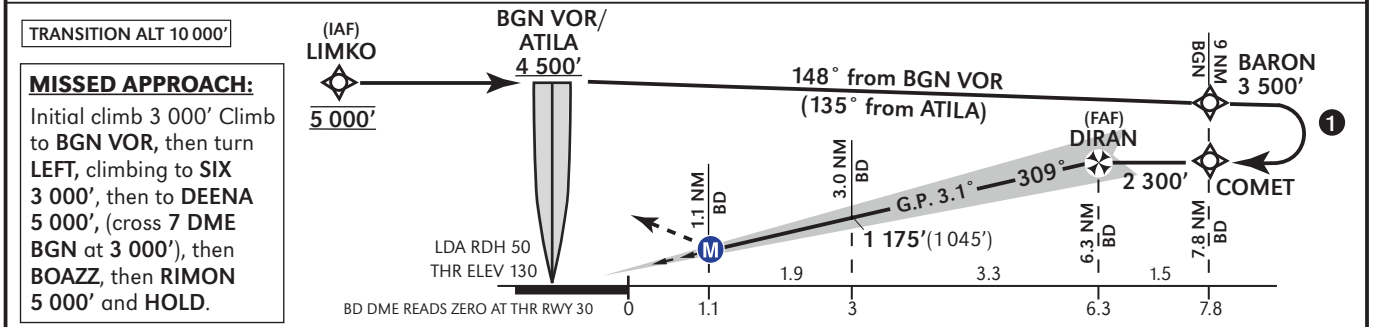
**AERODROME ELEV 134 ft**  
**HEIGHTS RELATED TO  
THR RWY 30 - ELEV 130 ft**

**APP 120.50**  
**TWR 134.60**

**TEL-AVIV / BEN-GURION  
LDA RWY 30**



|            |             |                 |                 |                 |
|------------|-------------|-----------------|-----------------|-----------------|
| BD LDA/DME | 2 DME       | 3 DME           | 4 DME           | 5 DME           |
| ALT (HAT)  | 840' (710') | 1 175' (1 045') | 1 510' (1 380') | 1 850' (1 720') |



| Straight-in Approach   |                    | Circling<br>High terrain EAST of airport.<br>Remain within BGN 3.8 DME VOR |           |        |
|------------------------|--------------------|--|-----------|--------|
| A                      | LDA with GS        | MAX KT   | OCA (H)   | VIS    |
| B                      | OCA(H) 520' (390') | 90   | 710 (576) | 2400 m |
| C                      | VIS - 1800 m       | 120  | 710 (576) | 2400 m |
| D                      |                    | 140  | 730 (596) | 2400 m |
|                        |                    | 165  | 830 (696) | 3200 m |
| Rate of descent GP 3.1 |                    | FPM  | 495       | 550    |
|                        |                    |  | 660       | 770    |
|                        |                    |  | 880       | 990    |

① Outbound refers to BGN DME, Inbound refer to BD DME

CHANGES: Frequencies, routing, altitudes, missed approach, profile