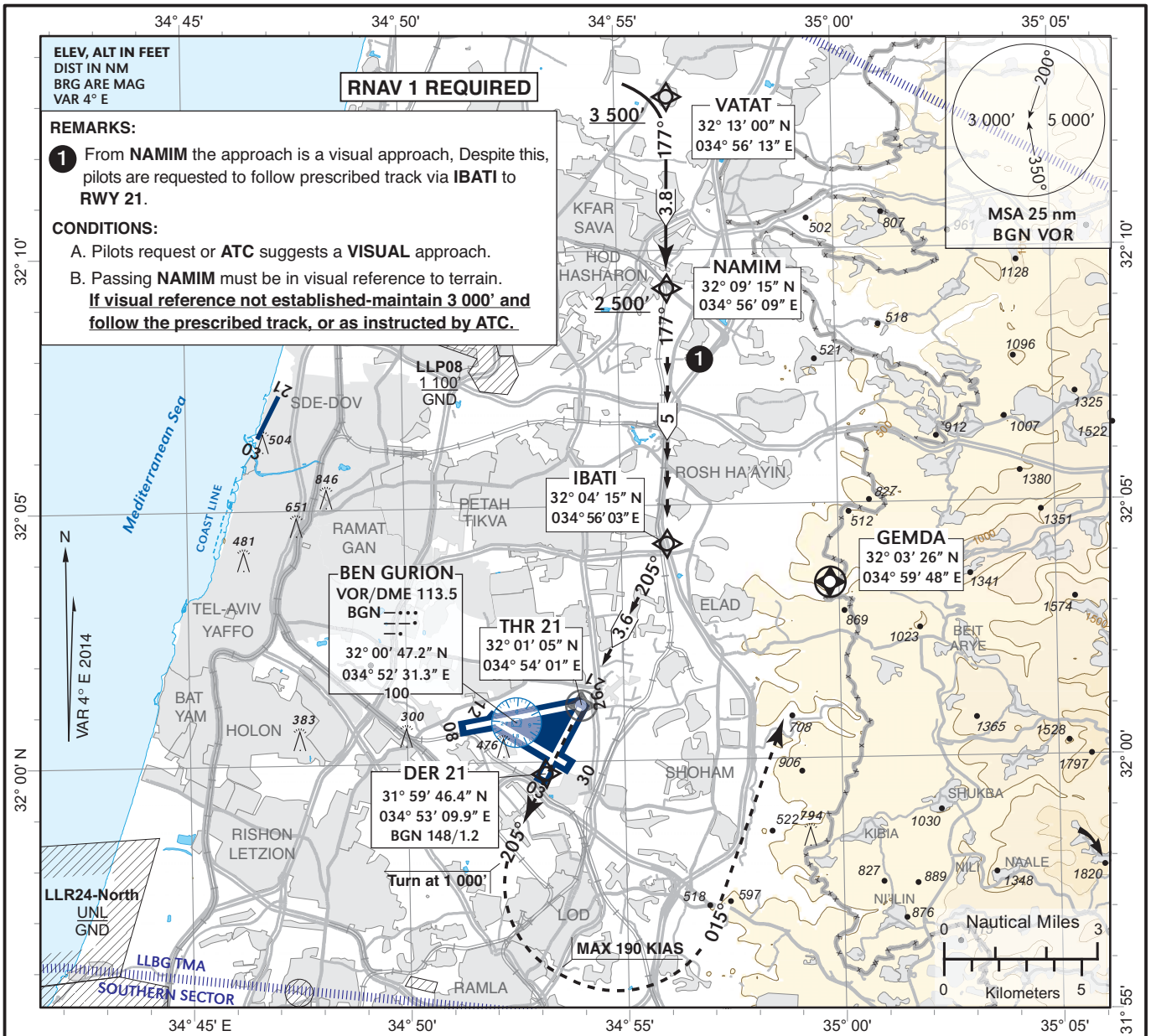


**VISUAL APPROACH CHART**  
(With prescribed RNAV track)

AERODROME ELEV **134 ft**  
HEIGHTS RELATED TO  
THR RWY 21 - ELEV **134 ft**

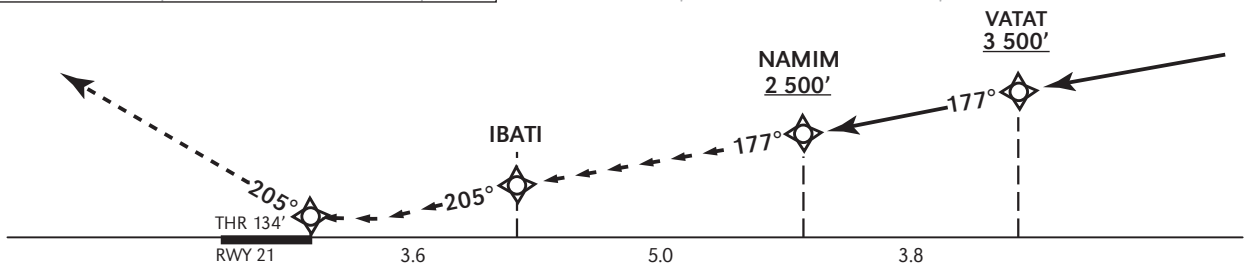
ARR	131.10
TWR	132.10
TMA	119.50

**TEL-AVIV / BEN-GURION**  
**NAMIM APPROACH**  
**RWY 21**



**GO AROUND:**

Initial climb to 5 000', Climb straight ahead, at DER 21 or 1 000', whichever is later, turn **LEFT** heading 015° and follow ATC instructions.



**VISUAL APPROACH RWY 21**  
**CEILING - VISIBILITY**

2 500' - 10KM