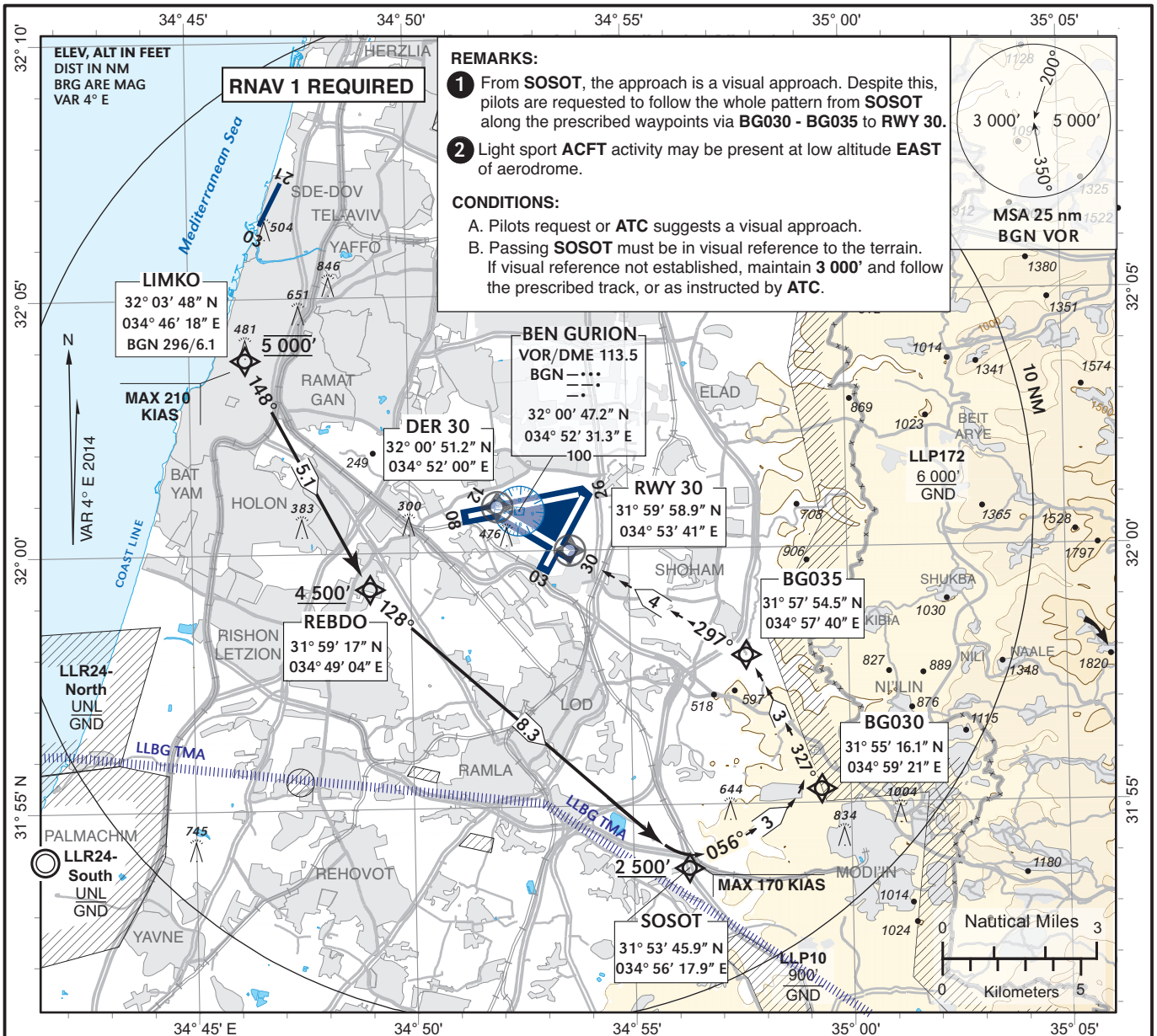


**VISUAL  
APPROACH CHART  
(with prescribed RNAV track)**

**AERODROME ELEV 134 ft  
HEIGHTS RELATED TO  
THR RWY 30 - ELEV 130 ft**

APP	120.50
TWR	134.60
TMA	119.50

**TEL-AVIV / BEN-GURION  
SOSOT APPROACH RWY 30**

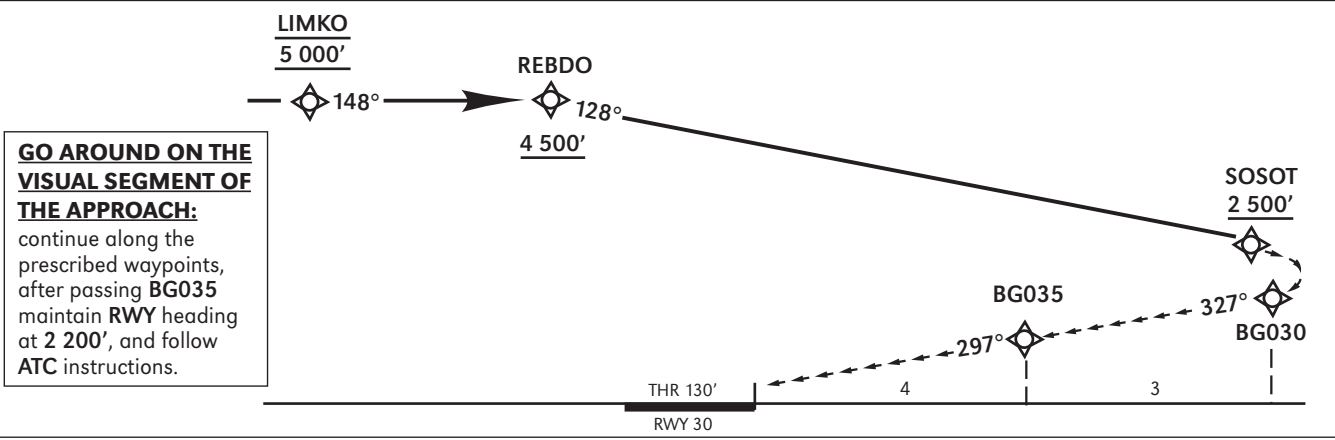
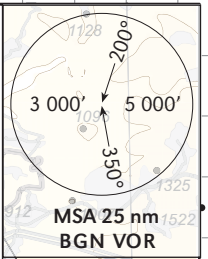


**REMARKS:**

- From **SOSOT**, the approach is a visual approach. Despite this, pilots are requested to follow the whole pattern from **SOSOT** along the prescribed waypoints via **BG030 - BG035** to **RWY 30**.
- Light sport **ACFT** activity may be present at low altitude **EAST** of aerodrome.

**CONDITIONS:**

- Pilots request or **ATC** suggests a visual approach.
- Passing **SOSOT** must be in visual reference to the terrain. If visual reference not established, maintain **3 000'** and follow the prescribed track, or as instructed by **ATC**.



**GO AROUND ON THE VISUAL SEGMENT OF THE APPROACH:**  
continue along the prescribed waypoints, after passing **BG035** maintain **RWY** heading at **2 200'**, and follow **ATC** instructions.

**VISUAL APPROACH RWY 30  
CEILING - VISIBILITY**

**3 000' - 10 KM**

CHANGES: Frequencies, routing, altitudes, missed approach, profile