

STANDARD  
DEPARTURE CHART  
INSTRUMENT (SID) - ICAO

AERODROME ELEV 134 ft

TWR 134.60  
DEP 120.50

TEL-AVIV / BEN-GURION  
RWY 21  
PURLA 1G

ELEV. ALT IN FEET  
DIST IN NM  
BRG ARE MAG  
VAR 4° E

**GENERAL INSTRUCTIONS**

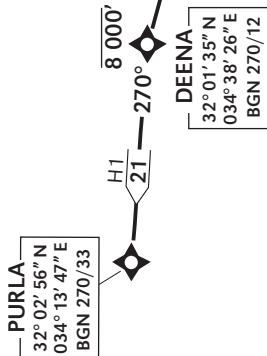
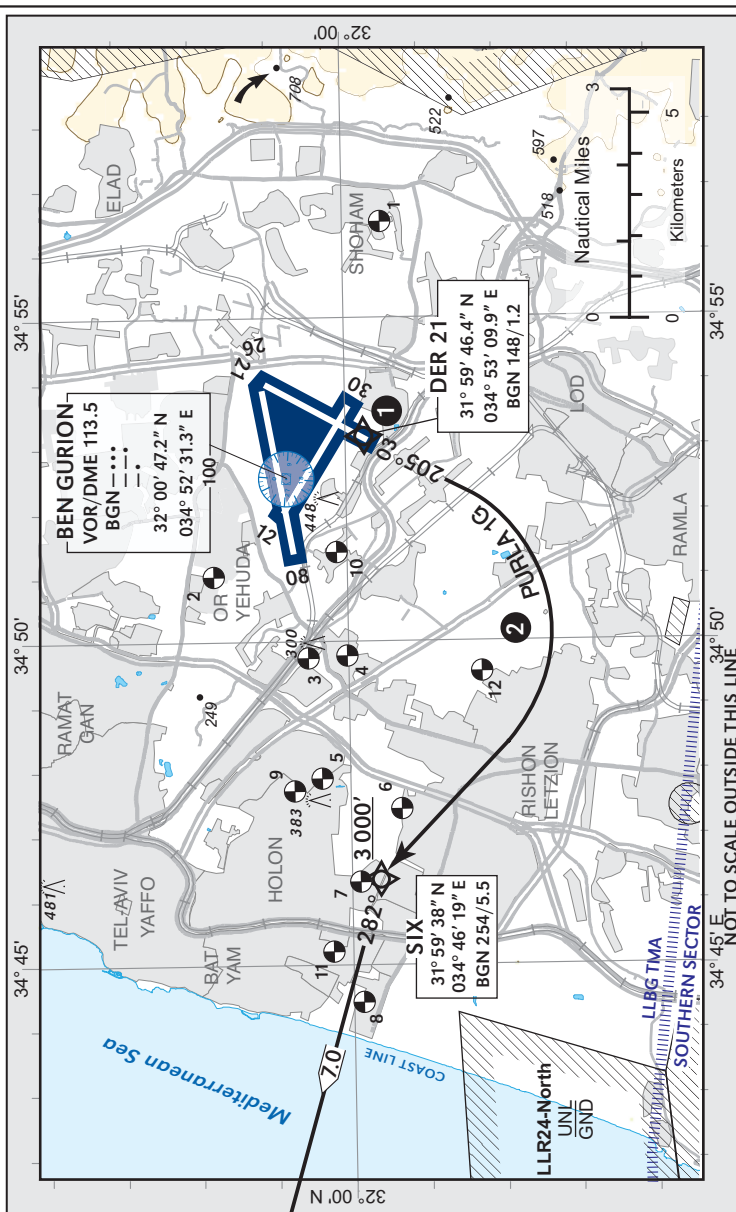
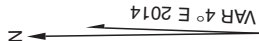
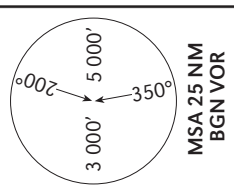
PURLA 1G requires a MNM climb gradient of 365'/NM (6%) up to 3 000' due to airspace restriction.  
If unable to comply advise ATC.

Ground speed	KT	90	120	150	180	190
MNM ROC	FPM	550	730	920	1100	1160

SID	RWY	TAKE-OFF	ROUTING/ALTITUDE
PURLA 1G	21	Initial climb 3 000'. Climb straight ahead, at 700' turn RIGHT to WPT SIX, cross SIX at or above 3 000'.	Fly to PURLA via DEENA. Cross DEENA at or below 8 000'.

**Non RNAV ACFT:** Initial climb 3 000'. Climb straight ahead, at 700' turn RIGHT heading 295 and expect radar vectoring.

**RNAV 1 REQUIRED**



- NOTES**
- 1 Do not turn before crossing DER 21.
  - 2 MAX 190 KIAS until crossing SIX.

CHANGES: New chart

Procedure: LLBG RWY21 SID PURLA1G

navigation performace	path terminator (Recommended)	WPT Name	Lat./Long	Fly Over/By	Distance	True/Mag. Track	Upper/Lower Limit	Speed Limit (Kts)	Remarks
RNAV1	DF	DER21	31 59 46.4N 034 53 09.9E	FO		205M		-190	
RNAV1	CA	RWY21				205M	A700+	-190	
RNAV1	DF	SIX	31 59 38N 034 46 19E	FB			A3000+	-190	R
RNAV1	TF	DEENA	32 01 35N 034 38 26E	FB	7.0	282M	A8000-		L
RNAV1	TF	PURLA	32 02 56N 034 13 47E	FB	21	270M	A8000+		L