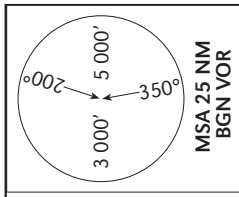


STANDARD DEPARTURE CHART
INSTRUMENT (SID)

TRANSITION ALTITUDE
10 000 FT

TWR 134.60
DEP 120.50
ACC 121.40

TEL-AVIV / BEN-GURION
RWY 26, 30
PURLA 2E, PURLA 2F
PURLA 2F Special



PURLA DEPARTURE (WESTBOUND)
PURLA TWO ECHO (PURLA 2E)
PURLA TWO FOXTROT (PURLA 2F)
PURLA TWO FOXTROT Special (PURLA 2F Special)

SPEED RESTRICTION
Max 250 KIAS except over water.
(D7.0 west of BGN VOR)

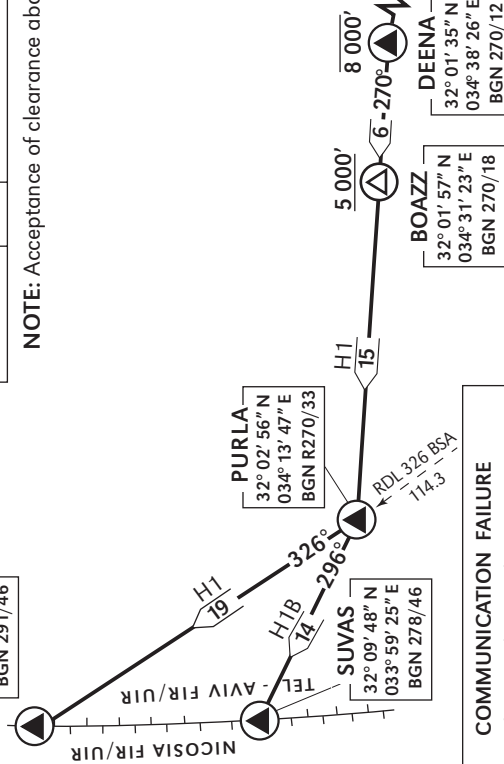
GENERAL INSTRUCTIONS
All SIDs include noise preferential routes.
For speed limitations - see noise abatement (refer to LLBG AD 2.21).
As soon as practicable after take-off contact **Ben-Gurion Departure** on 120.50 MHz.
These SIDs require a minimum climb gradient of 430 per NM (7%) up to 3 000'.

Ground speed	KT	90	120	150	180	210	240
MNM ROC	FPM	640	850	1065	1275	1490	1700

If unable to comply, advise ATC before start-up.

SID	RWY	TAKE - OFF	ROUTING/ALTITUDE	NOTES
PURLA 2E	26	Initial climb 3 000'. As soon as practicable intercept RDL 254 BGN to SIX.	Turn RIGHT, via DEENA to PURLA. Cross BGN 7.0 DME (coast line) at or above 3 000', DEENA at or below 8 000' and BOAZZ at or above 5 000'.	<p>1 To be assigned only during the period 0600-2300 local time. This procedure shall not be used when reported visibility is less than 1600 m. If unable to comply, during the periods 0600-0800 & 1600-2300 local time, request PURLA 2F Special, or RWY 26 and execute PURLA 2E</p> <p>2 To be assigned only during the period 0600-0800 & 1600-2300 local time.</p>
PURLA 2F 1	30	Initial climb 3 000'. As soon as practicable turn LEFT without traversing RWY 26 centerline, intercept RDL 254 BGN to SIX.	7 DME, advise ATC before start-up.	
PURLA 2F Special 2	30	Initial climb 3 000'. Straight ahead, at BGN 1.5 DME turn LEFT, 214° heading, when crossing RDL 265 BGN (BGN 3DME) turn RIGHT, intercept RDL 254 BGN to SIX.		

NOTE: Acceptance of clearance above 8 000' before crossing DEENA does not cancel the mandatory requirement to cross DEENA at or below 8 000'.



COMMUNICATION FAILURE

- Select mode A code 7600.
- Maintain 3 000' or climb as cleared by ATC until crossing BGN 7.0 DME then climb and maintain 8 000' to GITLA or SUVAS via PURLA and 3. Climb to FPL altitude.

