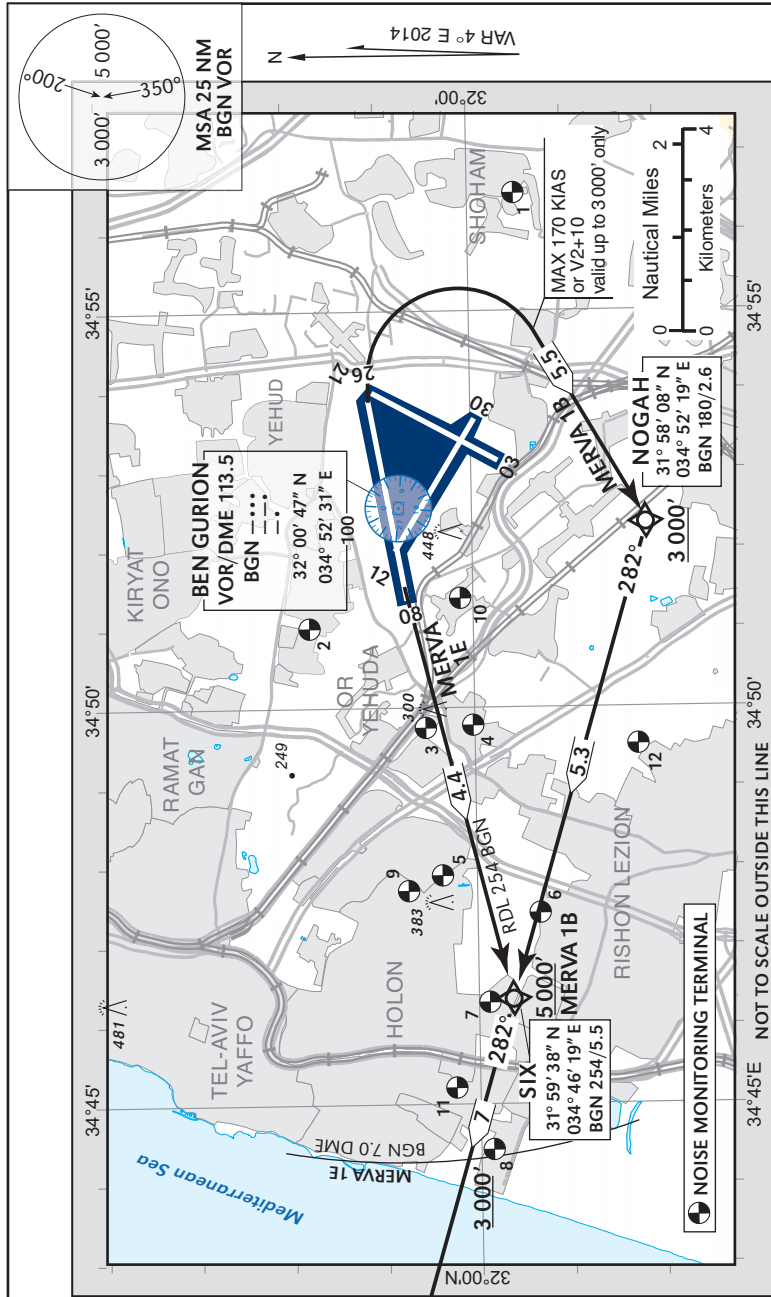


STANDARD DEPARTURE CHART-
INSTRUMENT (SID)

TRANSITION ALTITUDE 10 000 FT

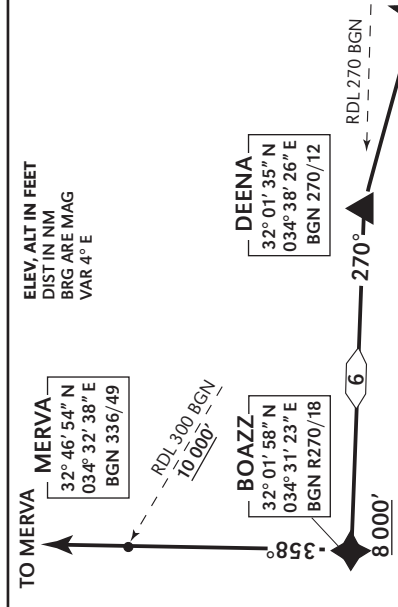
TWR 134.60
DEP 120.50
ACC 121.40

TEL- AVIV / BEN-GURION
RWY 08, 26
MERVA 1B, MERVA 1E



SPEED RESTRICTION
Max IAS 250 KTS below 10 000'
until crossing 7DME west of BGN.

SID	RWY	TAKE - OFF	ROUTING/ALTITUDE
MERVA 1B shall be in use: 23:00 - 05:00 (local time)	08	Initial climb 5 000'. At BGN 1.0, but not below 650, turn RIGHT to cross NOGAH at or above 3 000'. Non RNAV ACFT: Initial climb 5 000'. At BGN 1.0, but not below 650, turn RIGHT heading 245 and expect radar vectors.	From NOGAH continue to cross SIX at or above 5 000' then fly to DEENA , cross DEENA between 7 000' and 8 000', cross BOAZZ at or above 8 000'. Cross RDL 180 BGN at or above 3 000', SIX at or above 5 000' intercept RDL 270 BGN via DEENA between 7 000' and 8 000' and cross BOAZZ at or above 8 000'.
MERVA 1E shall be in use: 01:00 - 02:00 (local time)	26	Initial climb 3 000'. As soon as practicable fly to SIX . Non RNAV ACFT: Initial climb 3 000'. As soon as practicable intercept RDL 254 BGN to SIX , turn RIGHT heading 282 to DEENA . Cross BGN 7 DME at or above 3 000'.	Fly to DEENA , then to BOAZZ . Cross BGN 7 DME at or above 3 000', DEENA between 5 000' and 8 000', BOAZZ at or above 8 000'. Intercept BGN R270 via DEENA at or above 5 000', and cross BOAZZ at or above 8 000'.



GENERAL INSTRUCTIONS

All SIDs include noise preferential routes. speed limitations - see noise abatement (AIP LLBG AD 2.21) As soon as practicable after take-off, contact Departure on 120.50 MHz.
SID 1E requires a MNM climb gradient of 450/NM (7.4%) up to 8 000': ①

Ground speed - KTS	90	120	150	180	210
MNM ROC - FPM	675	900	1125	1350	1575

SID 1B requires a MNM climb gradient of 270' per NM (4.4%) up to 5 000': ①

Ground speed - KTS	90	120	150	180	210
MNM ROC - FPM	410	540	680	810	950

① If unable to comply at any point prior to reaching **BOAZZ** advise ATC and execute SID PURLA.

COMMUNICATION FAILURE
1. Select mode A code 7600.
2. after 7 DME climb and maintain 8000' feet to MERVA via BOAZZ.
3. Climb to FPL Altitude.

CHANGE: Crossing ALT, COMM failure