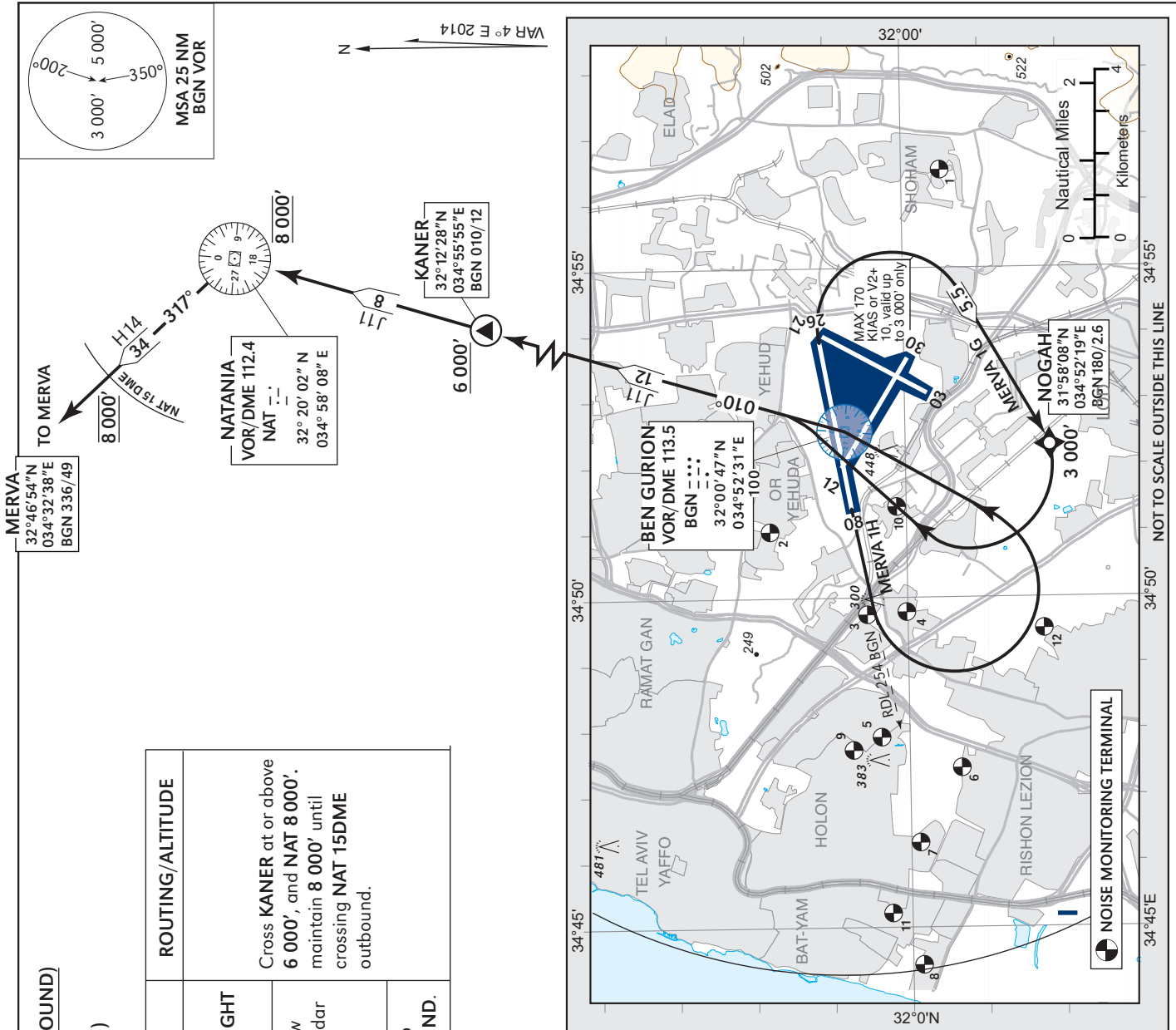


STANDARD DEPARTURE CHART-
INSTRUMENT (SID)

TRANSITION ALTITUDE 10 000FT
AERODROME ELEV 134 ft

TWR 134.60
DEP 120.50
ACC 121.40

TEL-AVIV / BEN-GURION
RWY 08, 26
MERVA 1G, MERV 1H



MERVA DEPARTURES (NORTHBOUND)
MERVA ONE GOLF (MERVA 1G)
MERVA ONE HOTEL (MERVA 1H)

SID	RWY	TAKE - OFF	ROUTING/ALTITUDE
MERVA 1G	08	At BGN 1.0, but not below 650, turn RIGHT to cross NOGAH at or above 3 000', turn RIGHT to intercept RDL 010 BGN NORTHBOUND.	Cross KANER at or above 6 000', and NAT 8 000'. maintain 8 000' until crossing NAT 15DME outbound.
MERVA 1H	26	At BGN 1.0, but not below 650, turn LEFT to BGN VOR and intercept R 010 NORTHBOUND.	

GENERAL INSTRUCTIONS

All SIDs include noise preferential routes. Speed limitations - see noise abatement (AIP LLBG AD 2.21) As soon as practicable after take-off, contact departure on 120.50 MHz.
SID MERV 1H requires a MNM climb gradient of 410 per NM (6.7%) up to 3 000':

Ground speed	KT	90	120	150	180	210
MNM ROC	FPM	610	810	1020	1220	1430

SID MERV 1G requires a MNM climb gradient of 270 per NM (4.4%) up to 4 000':

Ground speed	KT	90	120	150	180	210
MNM ROC	FPM	410	540	680	810	950

If unable to comply with climb gradients advise ATC before start up.

SPEED RESTRICTION
Max 250 KIAS below 10 000'.

COMMUNICATION FAILURE
1. Select mode A code 7600.
2. Climb 6 000' KANER, 8000' MERV;
3. Climb to FPL altitude.