

STANDARD  
DEPARTURE CHART  
INSTRUMENT (SID)

TRANSITION ALTITUDE NIL

TWR	134.60
DEP	120.50
TMA	119.50
ACC	120.90

TEL-AVIV / BEN-GURION

RWY 26

SALAM 3E, TOMAL 3E,  
ESTER 1E, BIRIM 1E

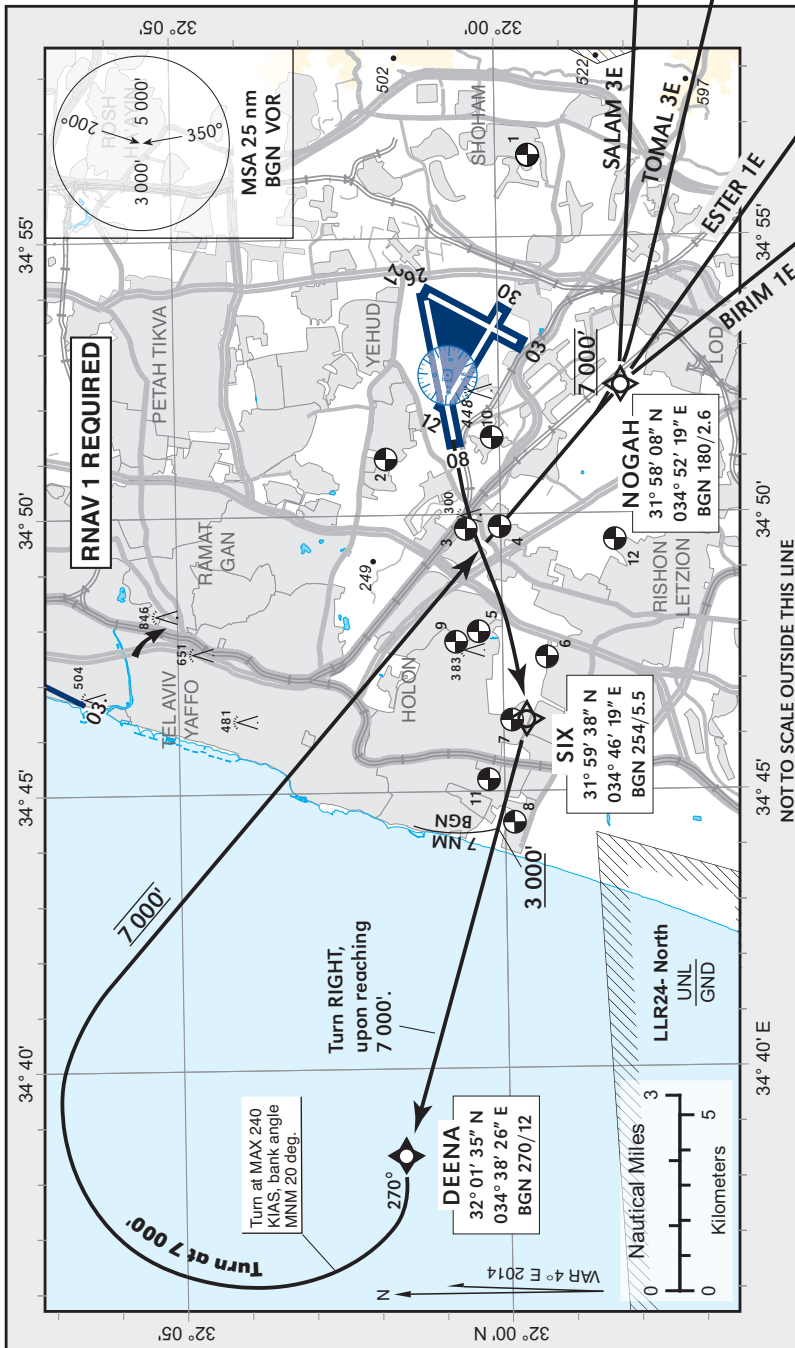
**SPEED RESTRICTION**  
Max KIAS 250 below 10 000'.

**GENERAL INSTRUCTIONS**

All SIDs include noise preferential routes. Speed limitations-see noise abatement (AIP LBG AD 2.21). As soon as practicable after take-off contact Ben-Gurion Departure on 120.50 MHZ. these SIDs require a MNM climb gradient of 430/NM (7%) up to 3 000'.

Ground speed	KT	90	120	150	180	210
MNM ROC	FPM	640	850	1065	1275	1490

If unable to comply, advise ATC before start-up.



SID	RWY	TAKE - OFF	ROUTING/ALTITUDE
SALAM 3E		Initial climb 3 000'. As soon as practicable intercept RDL 254	Upon reaching 7 000' turn RIGHT to cross NOGAH at 7 000', maintain 7 000' to SALAM. In case 7 000' not reached at DEENA fly 270° track until reaching 7 000'.
TOMAL 3E		BGN to SIX, turn right towards DEENA, cross 7 DME at or above 3 000'.	Upon reaching 7 000' turn RIGHT to cross NOGAH at 7 000', maintain 7 000' to TOMAL via TALMI. In case 7 000' not reached at DEENA fly 270° track until reaching 7 000'.
ESTER 1E	26		Upon reaching 7 000' turn RIGHT to cross NOGAH at 7 000', then climb to ESTER 9 000'. In case 7 000' not reached at DEENA fly 270° track until reaching 7 000'.
BIRIM 1E			Upon reaching 7 000' turn RIGHT to cross NOGAH at 7 000', then climb to BIRIM 8 000'. In case 7 000' not reached at DEENA fly 270° track until reaching 7 000'.

**COMMUNICATION FAILURE**

- Select mode A code 7600.
- After passing SALAM/ TOMAL/ ESTER/ BIRIM climb to FPL altitude.