

STANDARD
DEPARTURE CHART
INSTRUMENT (SID)

TRANSITION ALTITUDE NIL

TWR	134.60
DEP	120.50
TMA	119.50
ACC	120.90

TEL-AVIV / BEN-GURION

RWY 30

SALAM 3F (+SPECIAL), TOMAL 3F (+SPECIAL),
ESTER 1F (+SPECIAL), BIRIM 1F (+SPECIAL)

SPEED RESTRICTION
Max KIAS 250 below 10 000'.

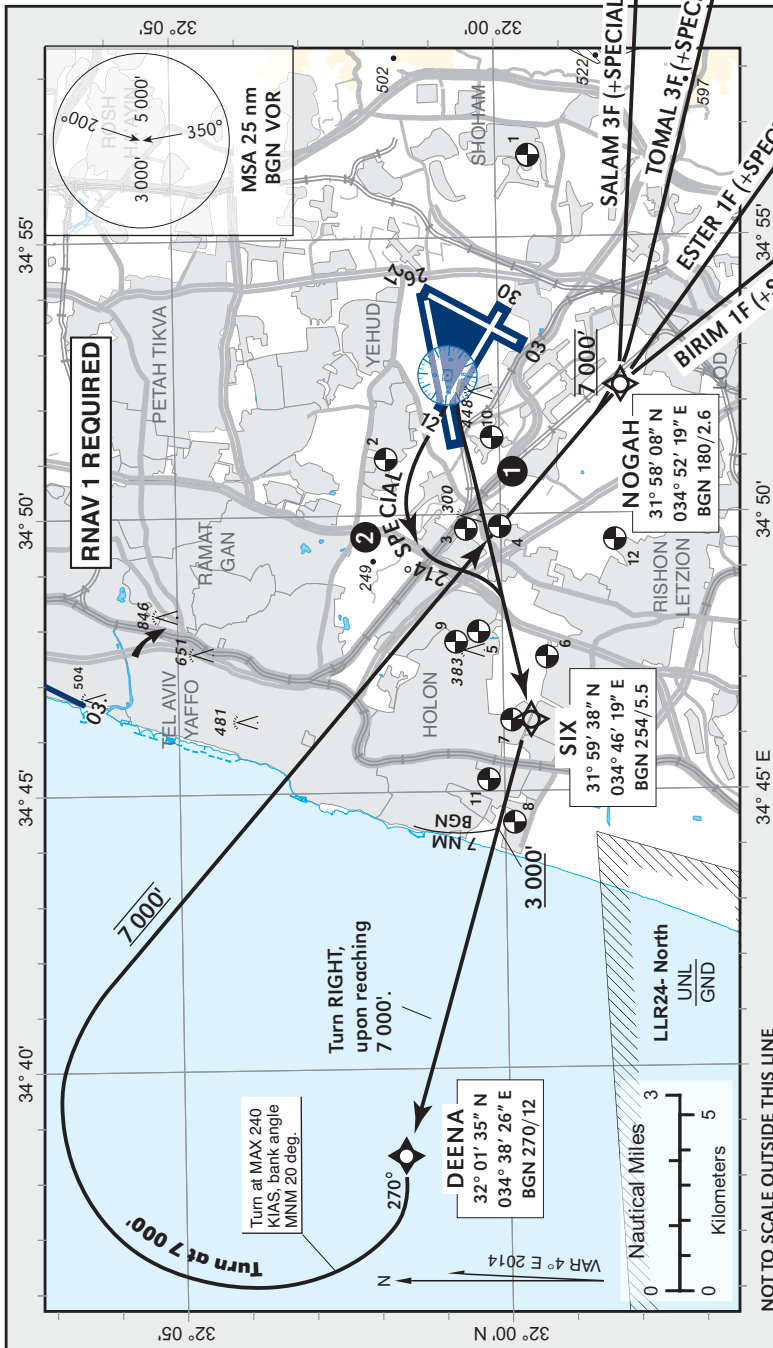
GENERAL INSTRUCTIONS

All SIDs include noise preferential routes.
Speed limitations-see noise abatement
(AIP LBG AD 2.21).
As soon as practicable after take-off contact
Ben-Gurion Departure on 120.50 MHz.

these sids require a MNM climb
gradient of 430/NM (7%) up to 3 000'.

Ground speed	KT	90	120	150	180	210
MNM ROC	FPM	640	850	1065	1275	1490

If unable to comply, advise
ATC before start-up.



ELEV. ALT IN FEET
DIST IN NM
BRG ARE MAG
VAR 4° E

SID	RWY	TAKE - OFF	ROUTING/ALTITUDE
SALAM 3F		Initial climb 3 000'. 1. if assigned one of these SIDs perform the following takeoff instructions: as soon as practicable turn LEFT without traversing RWY 26 centerline, intercept RDL 254 BGN to SIX (see note 1).	Cross BGN 7.0 DME at or above 3 000' towards DEENA, Upon reaching 7 000' turn RIGHT to cross NOGAH at 7 000', maintain 7 000' to SALAM. In case 7 000' not reached at DEENA fly 270° track until reaching 7 000'.
TOMAL 3F		as soon as practicable turn LEFT without traversing RWY 26 centerline, intercept RDL 254 BGN to SIX (see note 1).	Cross BGN 7.0 DME at or above 3 000' towards DEENA, Upon reaching 7 000' turn RIGHT to cross NOGAH at 7 000', maintain 7 000' to TOMAL via TALMI. In case 7 000' not reached at DEENA fly 270° track until reaching 7 000'.
ESTER 1F	30	2. when assigned one of these SIDs with the suffix "SPECIAL" perform the following take off instructions: Straight ahead, at BGN 1.5 DME turn LEFT 214° track, when crossing RDL 265 BGN (3DME) turn RIGHT to follow RDL 254 BGN to SIX. (see note 2).	Cross BGN 7.0 DME at or above 3 000' towards DEENA, Upon reaching 7 000' turn RIGHT to cross NOGAH at 7 000', then climb to ESTER 9 000'. In case 7 000' not reached at DEENA fly 270° track until reaching 7 000'.
BIRIM 1F			Cross BGN 7.0 DME at or above 3 000' towards DEENA, Upon reaching 7 000' turn RIGHT to cross NOGAH at 7 000', then climb to BIRIM 8 000'. In case 7 000' not reached at DEENA fly 270° track until reaching 7 000'.

NOTES

1 To be assigned only during the period 0600-2300 local time. This procedure shall not be used when the reported visibility is less than 1600m. If unable to comply, during the period 0600-0800 & 1600-2300 local time, request the special take-off to the same departure from RWY 30, or request RWY 26 to execute SALAM 3E / TOMAL 3E / ESTER 1E / BIRIM 1E accordingly.

2 To be assigned only during the period 0600-0800 & 1600-2300 local time.

COMMUNICATION FAILURE

- Select mode A code 7600.
- After passing SALAM / TOMAL / ESTER / BIRIM climb to FPL altitude.