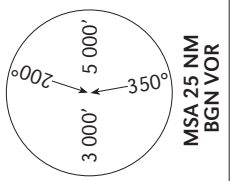


STANDARD DEPARTURE CHART  
INSTRUMENT (SID)

TRANSITION ALTITUDE  
10 000 FT

TWR 134.60  
DEP 120.50  
TMA 119.50  
ACC 121.40

TEL-AVIV / BEN-GURION  
RWY 12  
SOLIN 3C



ELEV. ALT IN FEET  
DIST IN NM  
BRG ARE MAG  
VAR 4° E

SOLIN DEPARTURE  
SOLIN THREE CHARLIE (SOLIN 3C)

**GENERAL INSTRUCTIONS**

All SIDs include noise preferential routes.  
For speed limitations - see noise abatement (refer to LLBG AD 2.21).  
As soon as practicable after take-off contact **Ben-Gurion Departure** on 120.50 MHz.  
This SID requires a minimum climb gradient of 300'/NM (5%) up to 6 000'.

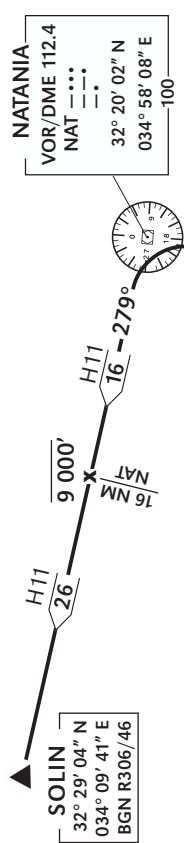
Ground speed	KT	90	120	150	180	210	240
MNM ROC	FPM	450	600	750	900	1050	1200

If unable to comply, advise ATC before start-up.

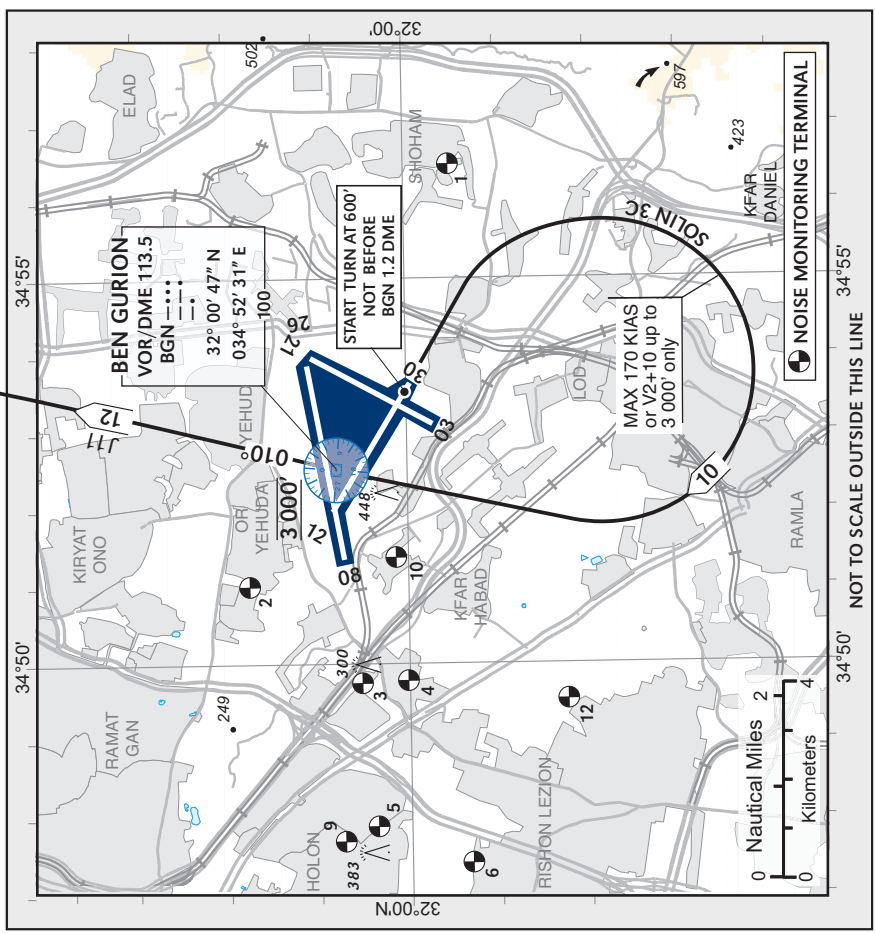
**SPEED RESTRICTION**  
Max 250 KIAS below 10 000'

**COMMUNICATION FAILURE**  
1. Select mode A code 7600.  
2. Climb 6 000' KANER, 8000' SOLIN;  
3. Climb to FPL altitude.

SID	RWY	TAKE - OFF	ROUTING/ALTITUDE
SOLIN 3C	12	At 600', not before BGN 1.2 DME turn RIGHT, to cross BGN VOR at 3 000' northbound on RDL 010 BGN.	Cross KANER at or above 6 000' to NAT. Turn LEFT, intercept RDL 279 NAT to SOLIN. Cross NAT 16 DME (on RDL 279 NAT) at or below 9 000'.



**KANER**  
32° 12' 28" N  
034° 55' 55" E  
BGN 010/2.6



VAR 4° E 2014

NOT TO SCALE OUTSIDE THIS LINE

0 Nautical Miles 2  
0 Kilometers 4

CHANGE: COMM failure