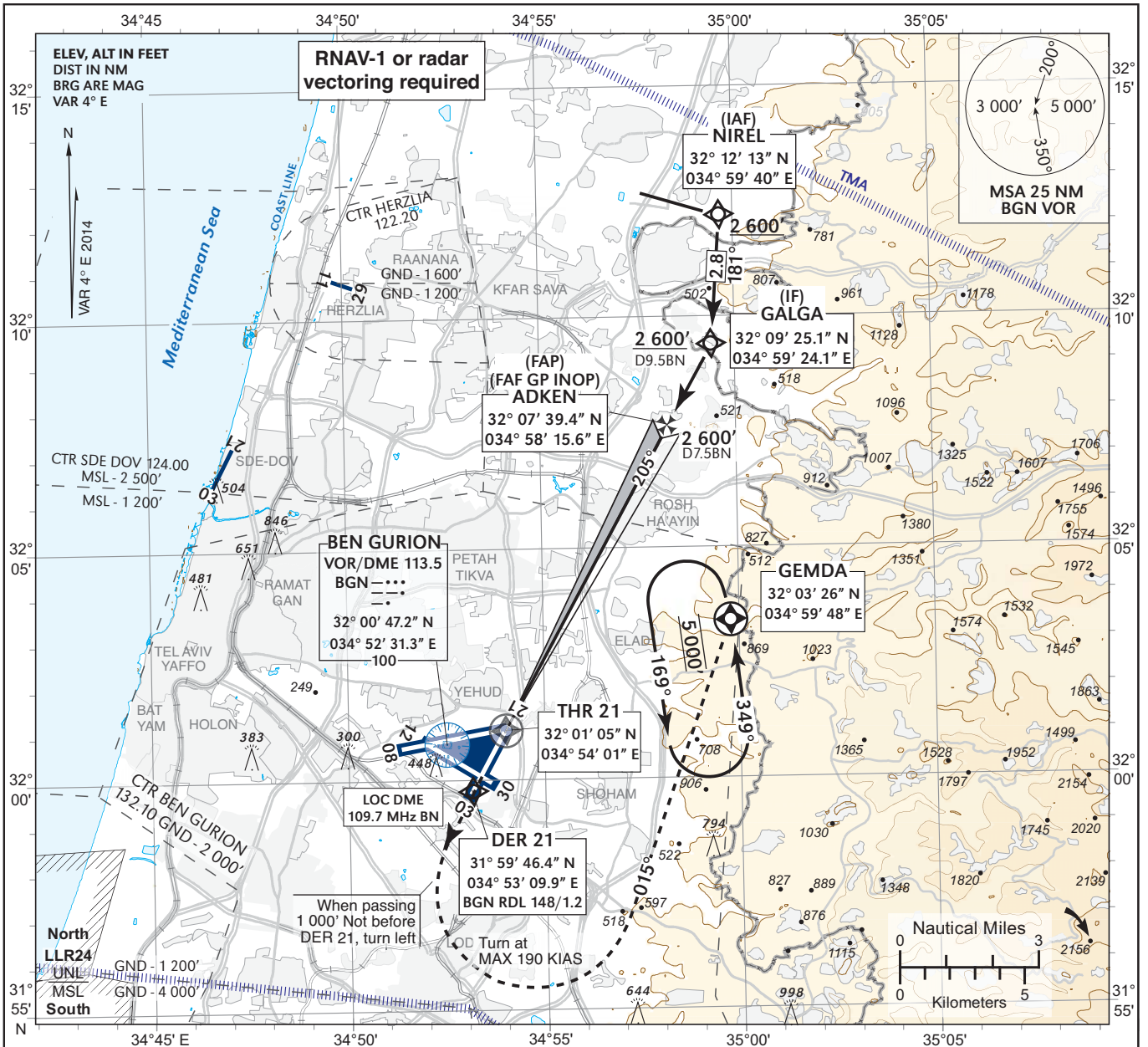


**INSTRUMENT
APPROACH
CHART - ICAO**

**AERODROME ELEV 134 ft
HEIGHTS RELATED TO
THR ELEV 134 ft**

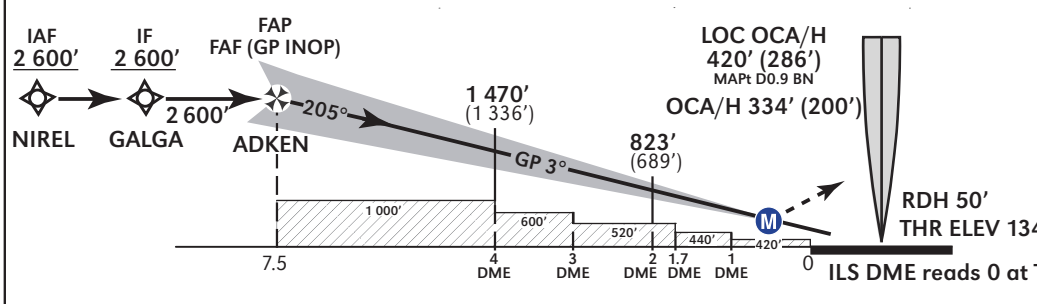
**ARR 131.10
TWR 132.10**

**TEL-AVIV / BEN-GURION
ILS RWY 21**



BG ILS DME	6 DME	4 DME	2 DME
ALT (HAT)	2 125' (1 991')	1 470' (1 336')	823' (689')

MISSED APPROACH:
Initial climb to 5 000'. Climb straight ahead, at DER 21 or 1 000', whichever is later, turn left to GEMDA 5 000' and hold.
Note Climb GRAD requirement of 4.5% (270'/NM) Due to airspace restrictions. If unable to comply utilize 2.5% OCA/H and advise ATC.



OBSTACLE CLEARANCE ALTITUDE/HEIGHT (OCA/H)	MISSED APCH climb gradient	A	B	C	D															
		<table border="1"> <tr> <td>GS</td> <td>KT</td> <td>90</td> <td>100</td> <td>120</td> <td>140</td> <td>160</td> <td>180</td> </tr> <tr> <td>ROD</td> <td>FPM</td> <td>477</td> <td>530</td> <td>636</td> <td>742</td> <td>850</td> <td>955</td> </tr> </table>					GS	KT	90	100	120	140	160	180	ROD	FPM	477	530	636	742
GS	KT	90	100	120	140	160	180													
ROD	FPM	477	530	636	742	850	955													
Straight in approach	4.5% up to 4,000	334' (200')																		
	2.5%	534' (400')																		
GP INOP	4.5% up to 4,000	420' (286')																		
	2.5%	540' (406')																		
Circling		N/A																		

Procedure: LLBG RWY21 ILS CAT I (1-15)

navigation performace	path terminator (Reccomended)	WPT Name	Lat./Long	Fly Over/By	Distance	True/Mag. Track	Upper/Lower Limit	Speed Limit (Kts)	Remarks
RNAV1	IF	NIREL	32 12 13N 034 59 40E	FB			A2600+		IAF
RNAV1	TF	GALGA	32 09 25.1N 034 59 24.1E	FB	2.8	181 MAG	A2600+		IF
RNAV1	TF	ADKEN	32 07 39.4N 034 58 15.6E	FB	2.0	205 MAG	A2600		FAP

RWY21 ILS Intermediate and Final Approach

Fix	Fix Coordinates	Fix formation Bearing	Fix formation distance
IF	32 09 25.1N 034 59 24.1E	208.98 true (205)	BN 9.5*
FAP	32 07 39.4N 034 58 15.6E	208.98 true (205)	BN 7.5*

* 0 at THR

RWY21 LOC Only Intermediate and Final Approach

Fix	FIX coordinates	Fix formation Bearing	Fix formation distance	Decent Angle
IF	32 09 25.1N 034 59 24.1E	208.98 true (205)	BN 9.5*	3.0°
FAF	32 07 39.4N 034 58 15.6E	208.98 true (205)	BN 7.5*	
MAPt	32 01 09.5N 034 54 03.8E	208.98 true (205)	BN 0.9	

* 0 at THR

HOLDING IDENTIFICATION LLBG ILS RWY12

HOLDING FIX	LATITUDE (N) LONGITUDE (E)	INBOUND TRUE TRACK (degrees)	INBOUND MAGNETIC TRACK (degrees)	MAXIMUM INDICATED AIRSPEED (kts)	MAXIMUM/MINIMUM HOLDING ALTITUDE/ LEVEL (FL/ft)	TIME/DISTANCE OUTBOUND	DIRECTION OF TURN
GEMDA	32 03 26N 034 59 48E	353	349	250	at 5000'	1 min	L