

**STANDARD DEPARTURE CHART
INSTRUMENT (SID) - ICAO**

TRANSITION ALTITUDE 10,000
AERODROME ELEV **134 ft**

**TWR 134.60
DEP 120.50
ACC 121.40**

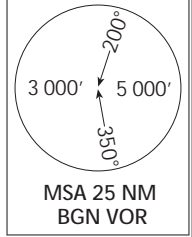
**TEL-AVIV / BEN-GURION
RWY 08
MAGEL 1**

ELEV, ALT IN FEET
DIST IN NM
BRG ARE MAG
VAR 4°E

N
VAR 4° E 2014

MERVA
32° 46' 54" N
034° 32' 38" E
BGN 336/49

RNAV 1 REQUIRED



GENERAL INSTRUCTIONS

SID MAGEL 1 requires a MNM climb gradient of 300'/NM (5%) up to 3 000' due to terrain. If unable to comply advise ATC.

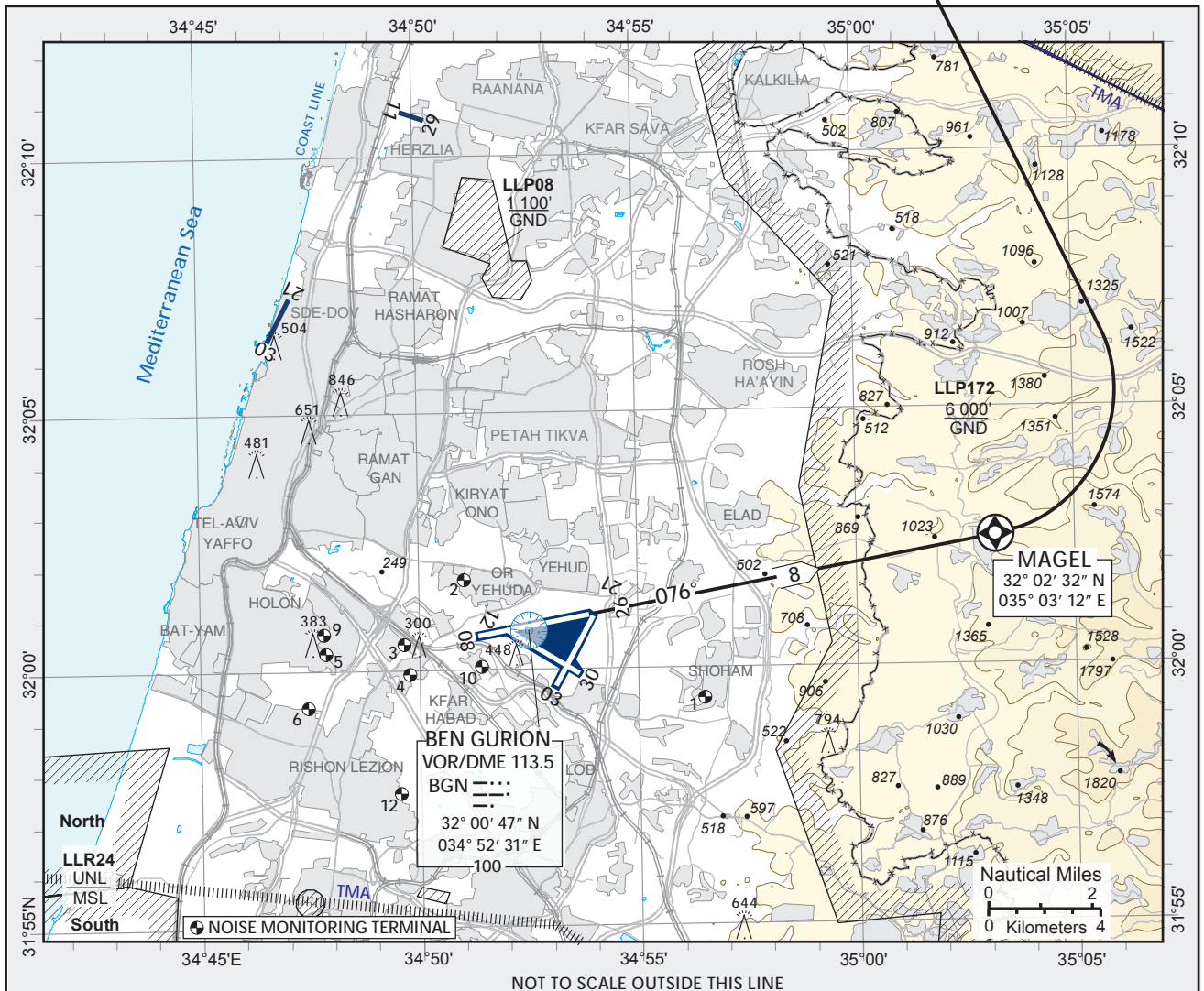
Ground speed	KT	90	120	150	180	210
MNM ROC	FPM	450	600	750	900	1050

NATANIA
VOR/DME 112.4
NAT ---:
32° 20' 02" N
034° 58' 08" E
100



COMMUNICATION FAILURE
1. Select mode A code 7600.
2. Climb 6 000' NAT, 8 000' MERVA.
3. Climb to FPL altitude.

SID	RWY	TAKE - OFF	ROUTING/ALTITUDE
MAGEL 1	08	Initial climb 5 000'. Climb straight ahead to MAGEL, then turn LEFT to cross NAT at or above 5 000'.	After NAT turn LEFT to MERVA, cross NAT 15 DME outbound at or below 8 000'.



Procedure: LLBG RWY08 SID MAGEL1

Navigation Performace	Path Terminator (Recommended)	WPT Name	Lat./long	Fly Over/by	Distance (NM)	True/Mag. Track (Degrees)	Upper/Lower Limit (ft)	Speed Limit (Kts)	Remarks
RNAV1	CA	RWY08				076M	A 534'+		
RNAV1	DF	MAGEL	32° 02' 32" N 035° 03' 12" E	FO	8.0				
RNAV1	DF	NAT	32° 20' 02" N 034° 58' 08" E	FB			A 5 000'+		L
RNAV1	TF	15NAT	32° 31' 47.7"N 034° 47' 03.5"E	FB	15	317M	A 8 000'-		L
RNAV1	TF	MERVA	32° 46' 54" N 034° 32' 38" E	FB	19	317M			