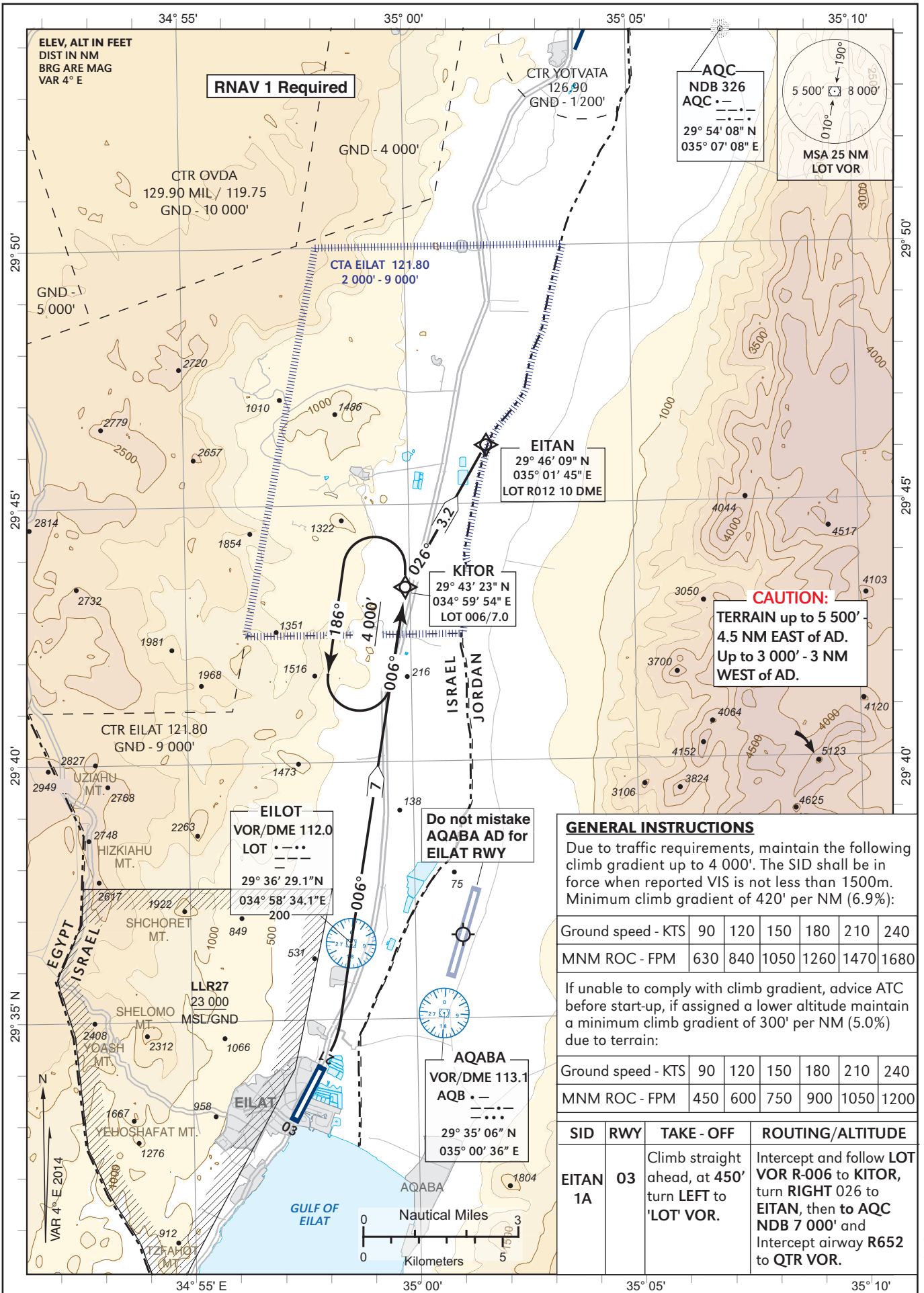


**STANDARD DEPARTURE CHART-
INSTRUMENT (SID) - ICAO**

AERODROME ELEV 43 FT

TWR	121.80
	119.00
AQABA	119.20
ACC	120.90

**EILAT
RWY 03
EITAN 1A**



CAUTION:
TERRAIN up to 5 000'
4.5 NM EAST of AD.
Up to 3 000' - 3 NM
WEST of AD.

**Do not mistake
AQABA AD for
EILAT RWY**

GENERAL INSTRUCTIONS

Due to traffic requirements, maintain the following climb gradient up to 4 000'. The SID shall be in force when reported VIS is not less than 1500m. Minimum climb gradient of 420' per NM (6.9%):

Ground speed - KTS	90	120	150	180	210	240
MNM ROC - FPM	630	840	1050	1260	1470	1680

If unable to comply with climb gradient, advice ATC before start-up, if assigned a lower altitude maintain a minimum climb gradient of 300' per NM (5.0%) due to terrain:

Ground speed - KTS	90	120	150	180	210	240
MNM ROC - FPM	450	600	750	900	1050	1200

SID	RWY	TAKE - OFF	ROUTING/ALTITUDE
EITAN 1A	03	Climb straight ahead, at 450' turn LEFT to 'LOT' VOR.	Intercept and follow LOT VOR R-006 to KITOR, turn RIGHT 026 to EITAN, then to AQC NDB 7 000' and Intercept airway R652 to QTR VOR.

CHANGES: Routing, LLR27 ALT, RNAV requirement

Procedure: LLET RWY03 SID EITAN 1A

Navigation Performace	Path Terminator (Recommended)	WPT Name	Lat./Long	Fly Over/By	Distance (NM)	True/Mag. Track (Degrees)	Upper/Lower Limit (ft)	Speed Limit (Kts)	Remarks
RNAV1	CA	RWY30				024M	A 450'		
RNAV1	DF	LOT	29° 36' 29.1"N 034° 58' 34.1"E	FO		006M			
RNAV1	CF	KITOR	29° 43' 23"N 034° 59' 54"E	FB	7.0	006M			
RNAV1	TF	EITAN	29° 46' 09"N 035° 01' 45"E	FB	3.2	026M	A 7 000'		R