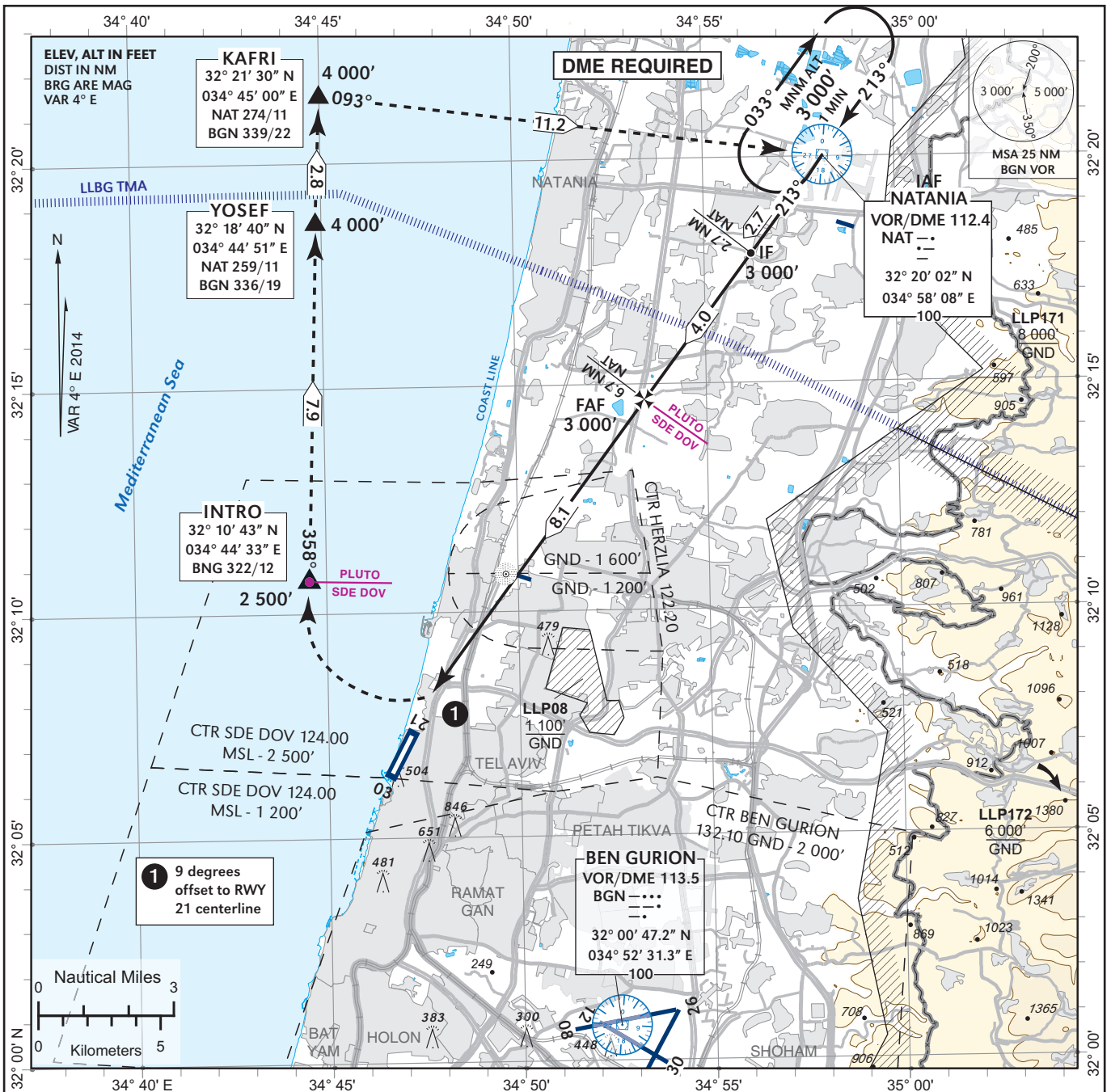


**INSTRUMENT  
APPROACH  
CHART - ICAO**

**AERODROME ELEV 43 ft  
THR RWY 21 ELEV 34 ft**

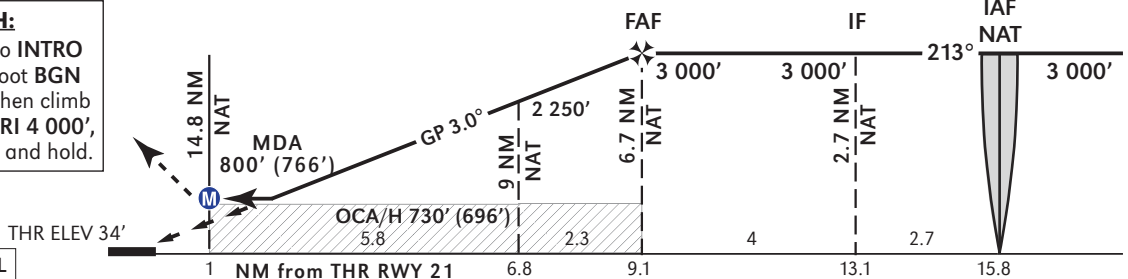
**ACC (PLUTO) 118.40  
TMA 119.50  
TWR 124.00**

**TEL-AVIV / SDE DOV  
VOR RWY 21**



from NAT	D13.5	D11	D9	D6.7
from THR	2.3	4.8	6.8	9.1
ALT (HAT)	820' (786')	1 615' (1 581')	2 250' (2 216')	3 000' (2 966')

**MISSED APPROACH:**  
Turn **RIGHT** climbing to INTRO 2 500'. (Do not overshoot BGN R - 310 southbound), then climb to YOSEF 4 000', KAFRI 4 000', then turn to VOR NAT and hold.



Transition Altitude - NIL

A	<p align="center"><b>Straight-in Approach and Circling</b> MDA(H) 800' (766') - VIS 3 000m. NOT APPLICABLE</p>
B	
C	
D	

**RWY21 VOR Initial, Intermediate and Final Approach**

Descent Angle	5.24% (3.00°)			
FIX	IAF (VOR NAT)	IF	FAF	MAPt
Fix Coordinates [WGS84]	32° 20' 02"N 034° 58' 08"E	32° 17' 52"N 034° 56' 13"E	32° 14' 40"N 034° 53' 23"E	32° 08' 10"N 034° 47' 39"E
Fix Formation Bearing [°True]	0	216.95	216.95	216.95
Fix Formation Distances [NM]	0	2.7	6.7	14.8

**HOLDING**

HOLDING FIX	Coordinates	INBOUND TRACK (Degrees)	MAX INDICATED AIRSPEED (Kts)	MIN/MAX HOLDING ALTITUDE (ft)	TIME/DISTANCE OUTBOUND	DIRECTION OF TURN
VOR NAT	32° 20' 02"N 034° 58' 08"E	212	230	A 3 000' - A 5 000'	1 MIN	R