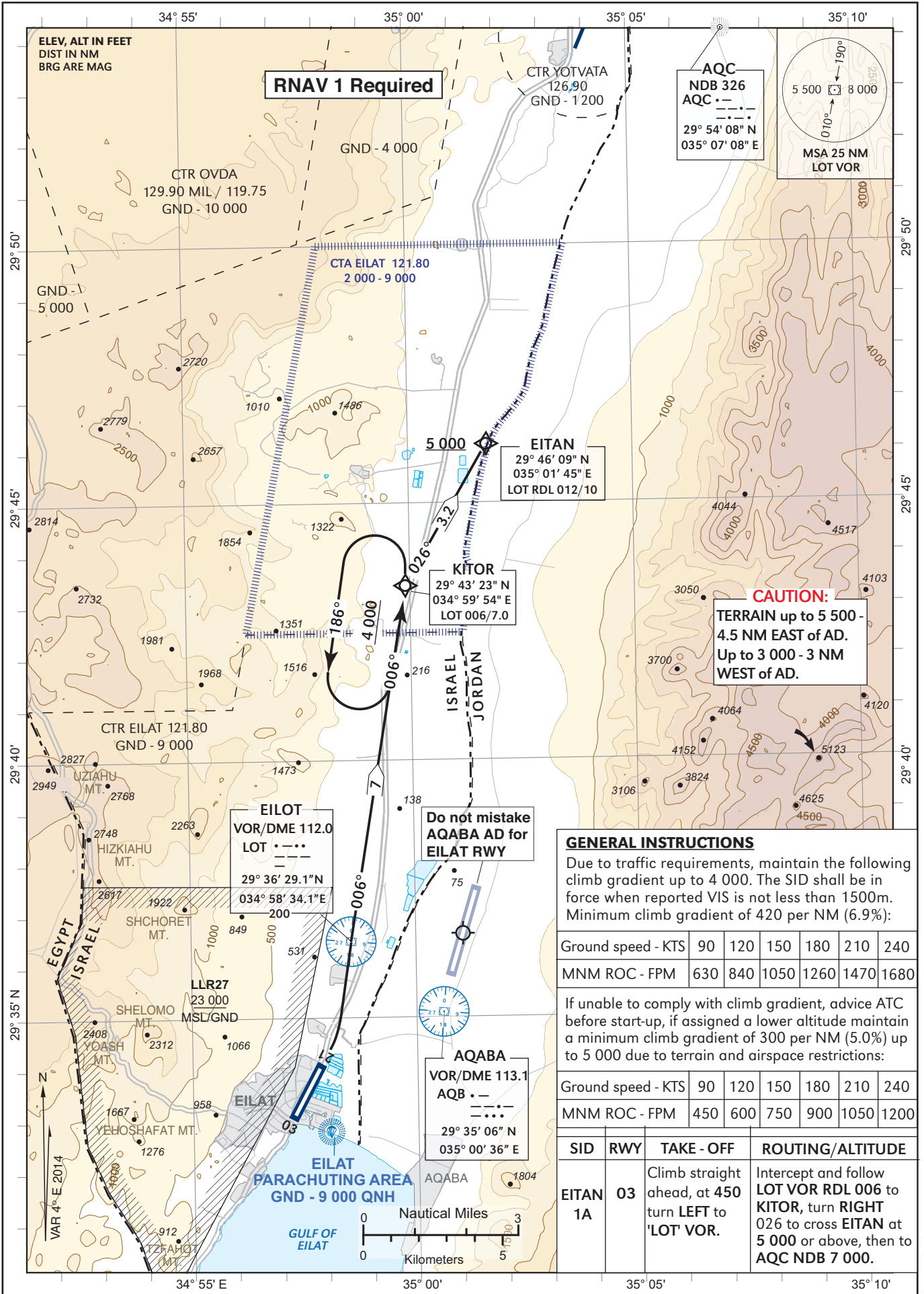


**STANDARD DEPARTURE CHART-  
INSTRUMENT (SID) - ICAO**

TRANSITION ALTITUDE NIL

TWR	121.80
AQABA	119.20
ACC	120.90

**EILAT  
RWY 03  
EITAN 1A**



CHANGES: Parachuting area, transition altitude, general instructions, altitude EITAN

Procedure: LLET RWY03 SID EITAN 1A

Navigation Performace	Path Terminator (Recommended)	WPT Name	Lat./Long	Fly Over/By	Distance (NM)	True/Mag. Track (Degrees)	Upper/Lower Limit (ft)	Speed Limit (Kts)	Remarks
RNAV1	CA	RWY30				024M	A 450		
RNAV1	DF	LOT	29° 36' 29.1"N 034° 58' 34.1"E	FO		006M			
RNAV1	CF	KITOR	29° 43' 23"N 034° 59' 54"E	FB	7.0	006M			
RNAV1	TF	EITAN	29° 46' 09"N 035° 01' 45"E	FB	3.2	026M	A 5 000 +		R