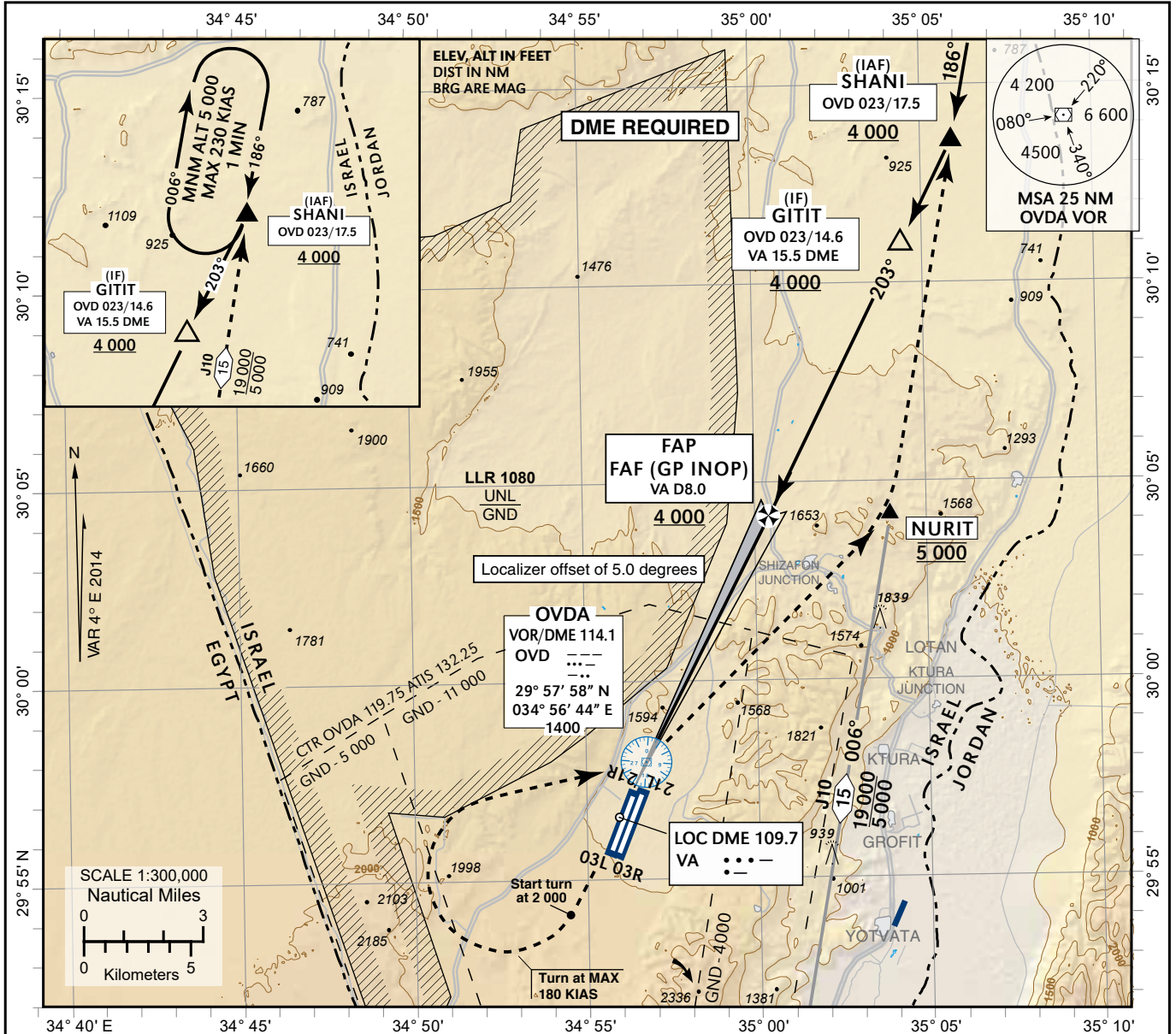


**INSTRUMENT
APPROACH
CHART - ICAO**

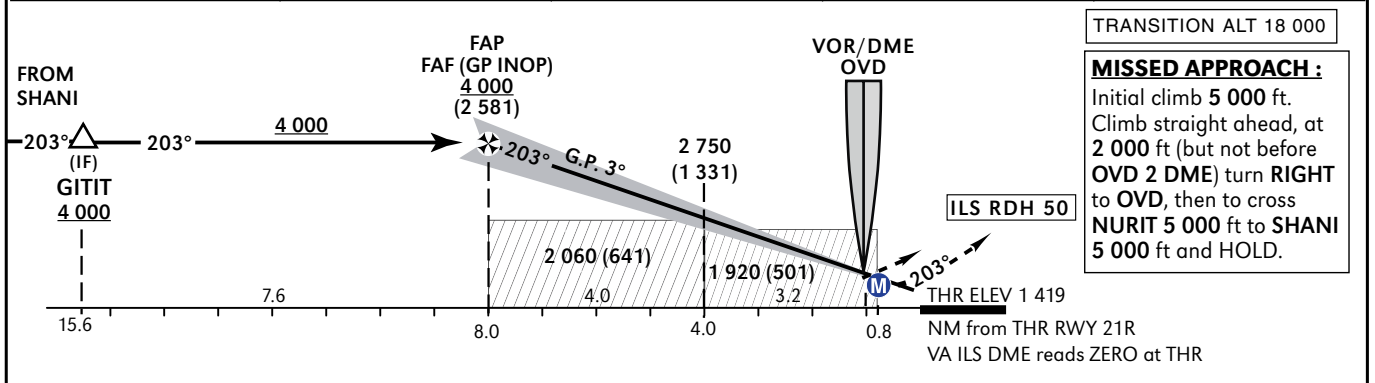
**AERODROME ELEV 1 483 ft
HEIGHTS RELATED TO
THR RWY 21R - ELEV 1 419 ft**

**TWR 119.75
(MIL) 129.90
ACC 120.90**

**OVDA (LLOV)
ILS RWY 21R**



ILS DME	5.0	4.0	3.0	2.0
ALTITUDE (HGT)	3 080 (1 661)	2 750 (1 331)	2 430 (1 011)	2 110 (691)



Straight-in approach	OCA (H)	A	B	C	D	Circle to land Remain within 2NM WEST of airport OCA (H)			
	ILS	1 800 (381)					MAX KTS		
	LOC (GS out)	1 920 (501)							
Ground speed	KT	90	100	120	140	160	180	120	2 040 (557)
Rate of descent	FPM	477	530	636	742	850	955	140	2 280 (797)
								165	2 380 (897)

Procedure: LLOV RWY21R

Navigation Performance	Path Terminator (Recommended)	WPT Name	Lat./Long	Fly Over/By	Distance (NM)	True/Mag. Track (Degrees)	Upper/Lower Limit (ft)	Speed Limit (Kts)	Remarks
RNAV1	IF	SHANI	30° 13' 35"N 035° 05' 54"E	FB			A 4 000 +		IAF
RNAV1	CF	GITIT	30° 10' 59"N 035° 04' 22"E	FB	2.9	207.0° True 203° Mag	A 4 000 +		IF

RWY21R ILS Intermediate and Final Approach

Fix	Fix Coordinates	Fix Formation Bearing (Degrees)	Fix Formation Distance (NM)
IF (GITIT)	30° 10' 59.0"N 035° 04' 22.0"E	207.1° True (203)	OVD 023/14.6 VA 15.5
FAP	30° 04' 08.4"N 035° 00' 23.6"E	207.1° True (203)	VA 7.95

* 0 at THR

RWY21R LOC only Intermediate and Final Approach

Fix	FIX coordinates	Fix Formation Bearing (Degrees)	Fix Formation Distance (NM)	Decent Angle
IF (GITIT)	30° 10' 59.0"N 035° 04' 22.0"E	207.1° True (203)	OVD 023/14.6 VA 15.5	3.0°
FAF	30° 04' 08.4"N 035° 00' 23.6"E	207.1° True (203)	VA 7.95	
MAPt	29° 57' 07.3"N 034° 56' 15.7"E	207.1° True (203)	VA 0.8	

* 0 at THR

HOLDING IDENTIFICATION ILS 21R

HOLDING FIX	LATITUDE (N) LONGITUDE (E)	INBOUND TRUE TRACK (Degrees)	INBOUND MAGNETIC TRACK (Degrees)	MAXIMUM INDICATED AIRSPEED (Kts)	MAXIMUM/MINIMUM HOLDING ALTITUDE/ LEVEL (FL/ft)	TIME/DISTANCE OUTBOUND	DIRECTION OF TURN
SHANI	30° 13' 35.0"N 035° 05' 54.0"E	190	186	230	A 5 000	1 min	R