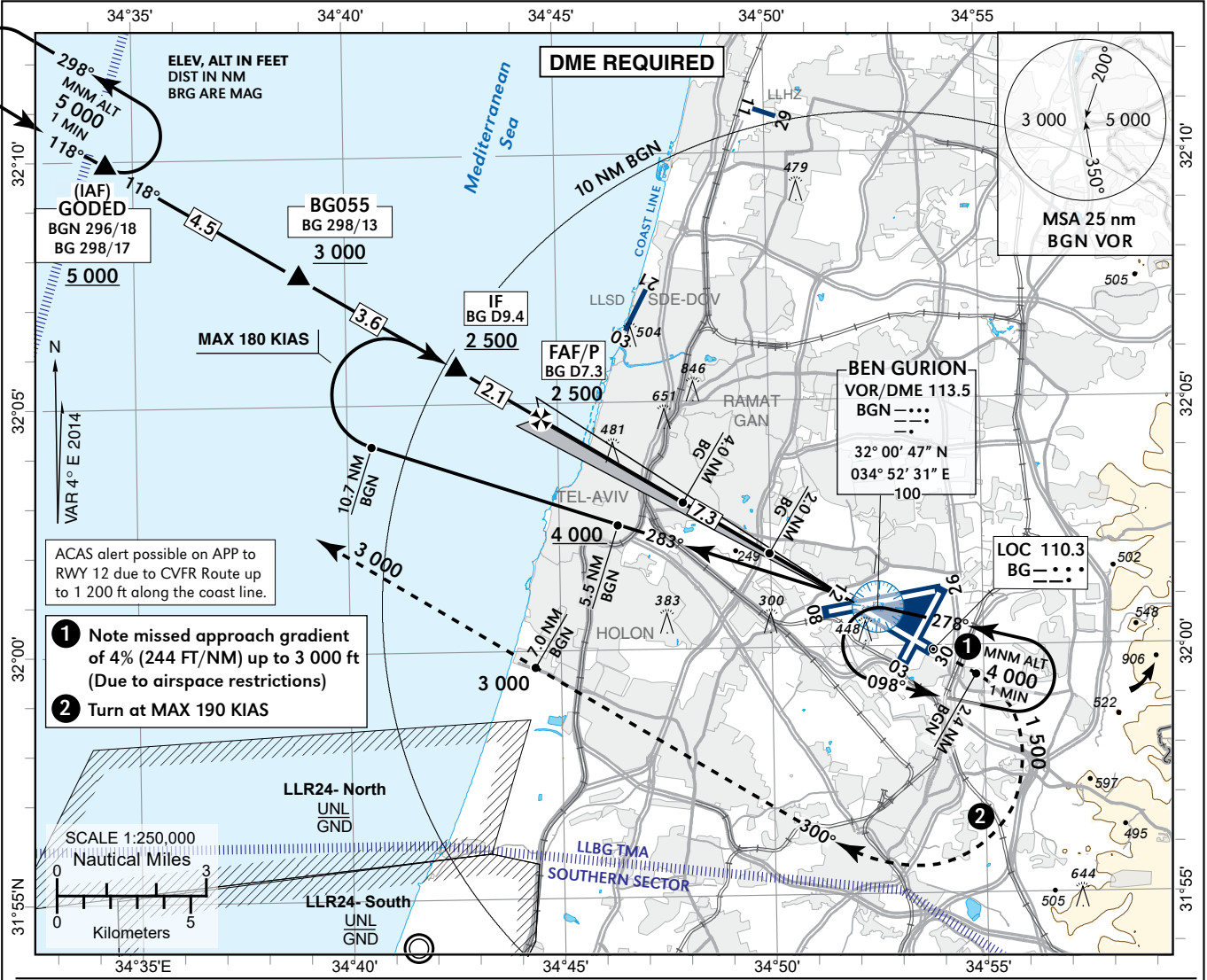


**INSTRUMENT  
APPROACH  
CHART - ICAO**

AD ELEV **134 ft**  
HEIGHTS RELATED TO  
THR RWY 12 - ELEV **103 ft**

APP **120.50**  
TWR **134.60**

**TEL-AVIV / BEN-GURION (LLBG)  
ILS RWY 12  
CAT I**

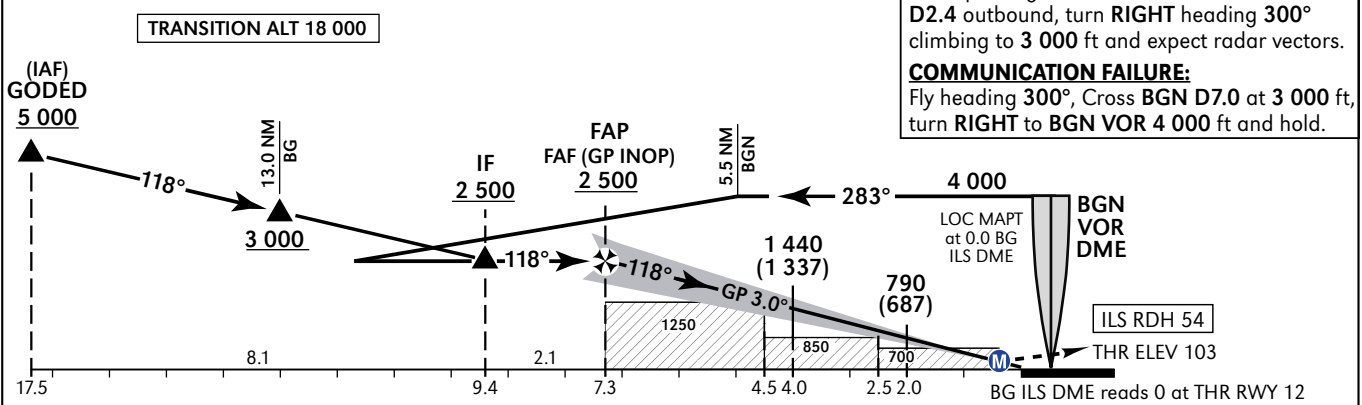


- ACAS alert possible on APP to RWY 12 due to CVFR Route up to 1 200 ft along the coast line.
- 1 Note missed approach gradient of 4% (244 FT/NM) up to 3 000 ft (Due to airspace restrictions)
- 2 Turn at MAX 190 KIAS

BG ILS DME	6 DME	4 DME	2 DME
ALTITUDE	2 090	1 440	790

**MISSED APPROACH:**  
Initial climb 3 000 ft, Climb straight ahead, when passing 1 500 ft but not before BGN D2.4 outbound, turn RIGHT heading 300° climbing to 3 000 ft and expect radar vectors.

**COMMUNICATION FAILURE:**  
Fly heading 300°, Cross BGN D7.0 at 3 000 ft, turn RIGHT to BGN VOR 4 000 ft and hold.



OCA (H)		A	B	C	D	Circling	
Straight-in	CAT I	303 (200)					NA
	GP INOP	700 (597)					

GS	KT	90	110	130	150	170	190
Rate of descent (5.2%)	FPM	478	584	690	796	902	1 008

Procedure: LLBG RWY12 ILS

Navigation Performance	Path Terminator (Recommended)	WPT Name	Lat./Long	Fly Over/By	Distance (NM)	True/Mag. Track (Degrees)	Upper/Lower Limit (ft)	Speed Limit (Kts)	Remarks
RNAV1	IF	GODED	32° 09' 54"N 034° 34' 22"E	FB			A 5 000+		IAF
RNAV1	TF	BG055	32° 07' 34"N 034° 38' 58"E	FB	4.5	118	A 3 000+		
RNAV1	TF	BG94D	32° 05' 44"N 034° 42' 36"E	FB	3.6	118	A 2 500+		IF

RWY12 ILS Intermediate and Final Approach

Fix	Fix Coordinates	Fix Formation Bearing (Degrees)	Fix Formation Distance (NM)
IF	32° 05' 44"N 034° 42' 36"E	121.6 true (118)	BG 9.4*
FAP	32° 04' 41"N 034° 44' 37"E	121.6 true (118)	BG 7.3*

\* 0 at THR

RWY12 LOC Only Intermediate and Final Approach

Fix	FIX coordinates	Fix Formation Bearing (Degrees)	Fix Formation Distance (NM)	Decent Angle
IF	32° 05' 44"N 034° 42' 36"E	121.6 true (118)	BG 9.4*	3.0°
FAF	32° 04' 41"N 034° 44' 37"E	121.6 true (118)	BG 7.3*	
MAPt	32° 00' 52"N 034° 51' 59"E	121.6 true (118)	BG 0.0	

\* 0 at THR

HOLDING IDENTIFICATION LLBG ILS RWY12

HOLDING FIX	LATITUDE (N) LONGITUDE (E)	INBOUND TRUE TRACK (Degrees)	INBOUND MAGNETIC TRACK (Degrees)	MAXIMUM INDICATED AIRSPEED (Kts)	MAXIMUM/MINIMUM HOLDING ALTITUDE/ LEVEL (FL/ft)	TIME/DISTANCE OUTBOUND	DIRECTION OF TURN
GODED	32° 09' 54"N 034° 34' 22"E	121.6	118	210	at or above 5 000	1 min	L