

**STANDARD DEPARTURE
ROUTE - VISUAL**

TRANSITION ALT NIL

AD ELEV 43 ft

TWR (SDE DOV) 124.00
BEN GURION DEP 120.50
BEN GURION TMA 119.50
ACC (PLUTO) 118.40

TEL-AVIV / SDE-DOV (LLSD)

TOMAL 1A

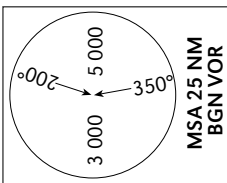
TOMAL 1B

TOMAL DEPARTURES (SOUTHBOUND)

TOMAL 1A
TOMAL 1B

GENERAL INSTRUCTIONS

Pilots accepting a visual departure shall maintain own terrain separation until turning to INTRO.
TOMAL 1A departure requires ceiling not below 800 ft and visibility not less than 800m.
TOMAL 1B departure requires ceiling not below 800 ft and visibility not less than 2,000m.
These departures require a minimum climb gradient up to 5 000 ft as follows:
Take-off RWY 21 - 350 per NM (5.7%).
Take-off RWY 03 - 420 per NM (6.8%).
If unable to comply - advise ATC.



Ground speed	KT	90	110	130	150	180
RWY 03 - 420 MNM ROC	FPM	630	770	910	1050	1260
RWY 21 - 350 MNM ROC	FPM	525	640	760	875	1050

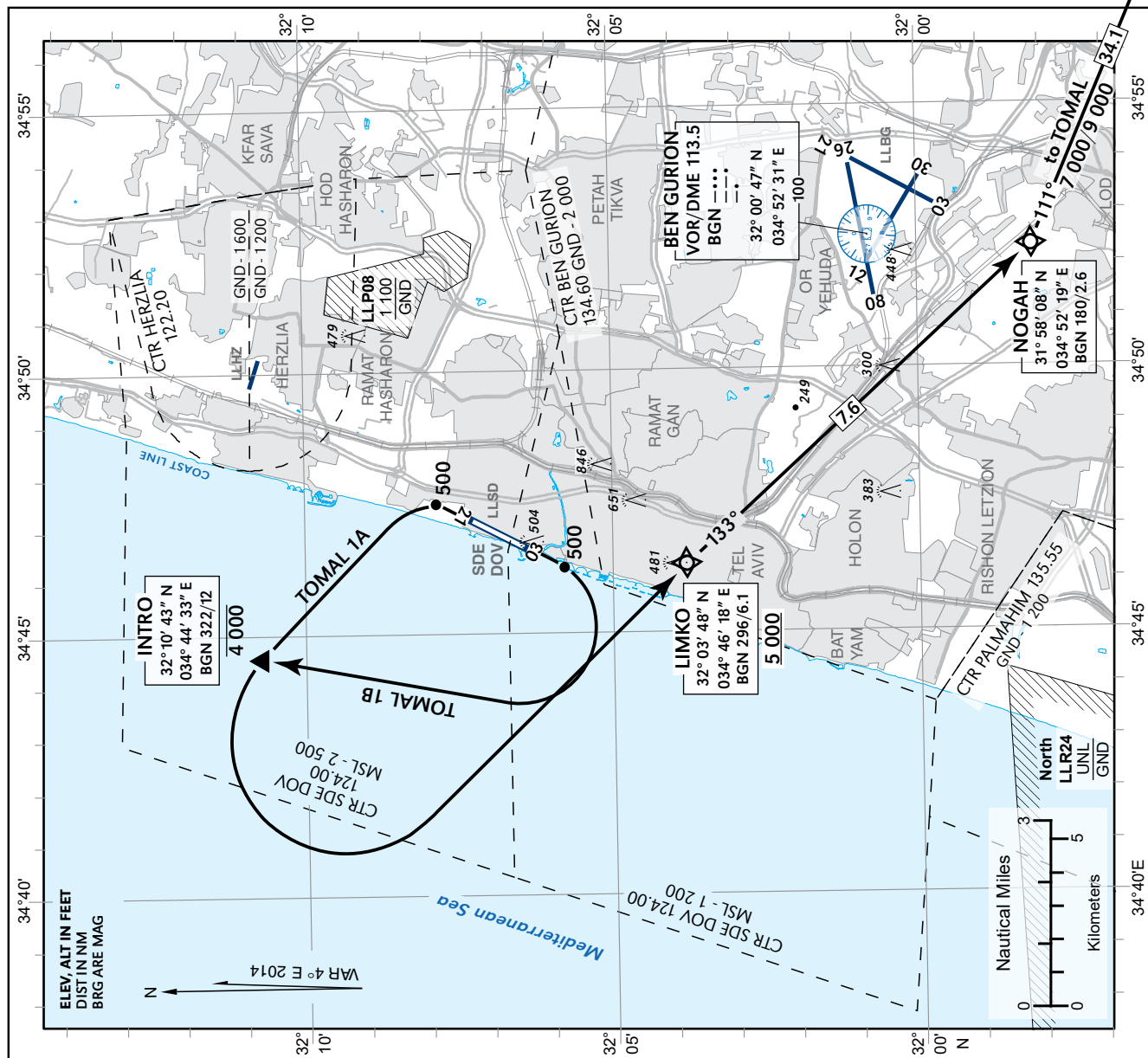
RWY	TAKE - OFF	ROUTING / ALTITUDE
TOMAL 1A (RNAV1 Required)	straight ahead, at 500 ft turn LEFT Climbing to INTRO.	Cross INTRO at or below 4 000 ft, Turn LEFT to LIMKO. Cross LIMKO at or above 5 000 ft. Continue climbing Via NOGAH to TOMAL 7 000/9 000 ft, as per ATC.
TOMAL 1B (RNAV1 Required)	straight ahead, at 500 ft turn RIGHT Climbing to INTRO.	

NON RNAV ACFT -

Advise "NON-RNAV" to ATC before start up. after reaching INTRO, turn LEFT heading 140 and expect radar vectors.

COMMUNICATION FAILURE

1. Select mode A code 7600.
2. Proceed in accordance with FPL and follow established procedure.



CHANGES: NON-RNAV departure instructions