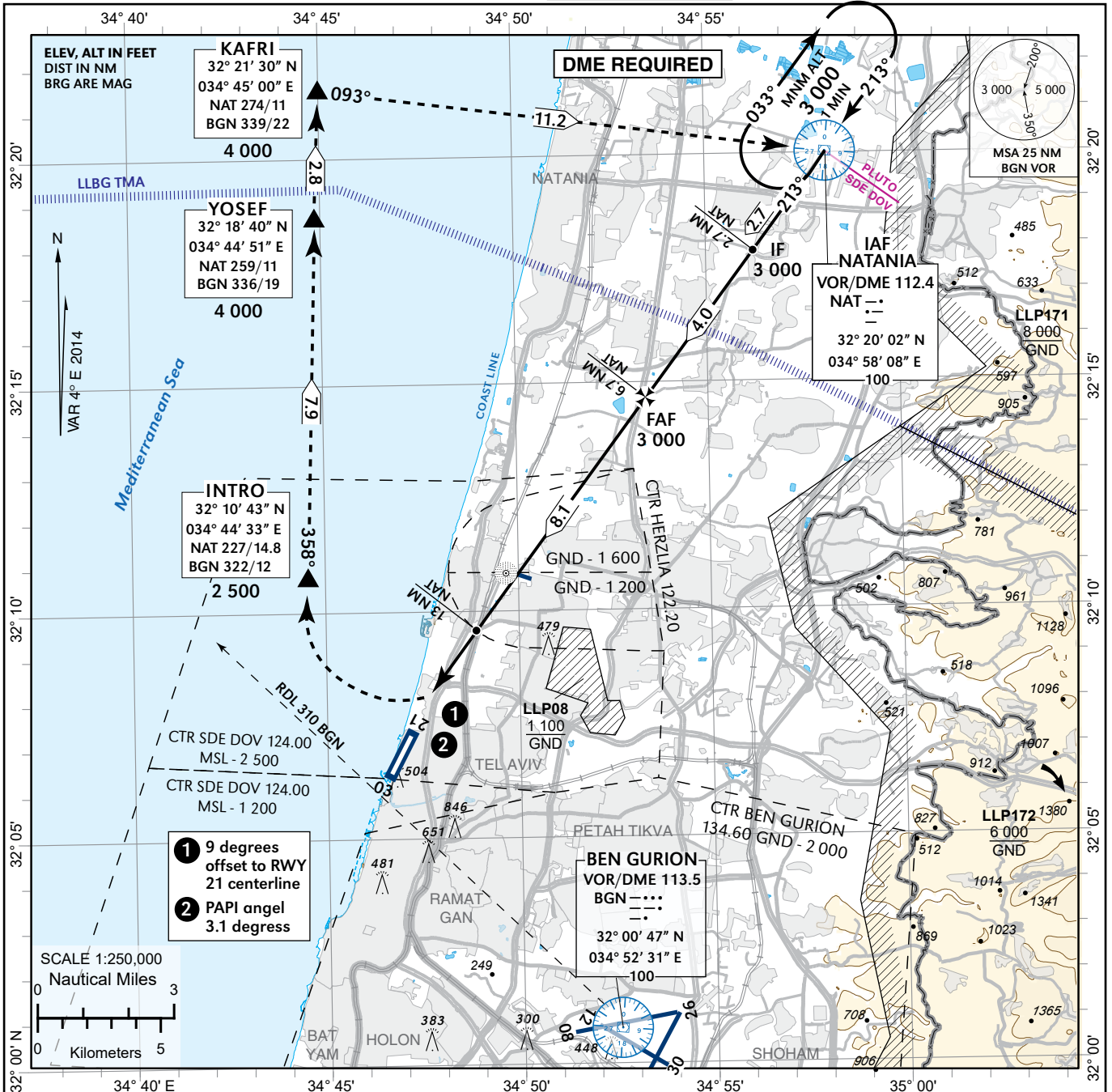


**INSTRUMENT
APPROACH
CHART - ICAO**

**AERODROME ELEV 43 ft
THR RWY 21 ELEV 34 ft**

**ACC (PLUTO) 118.40
TMA 119.50
TWR 124.00
ATIS 122.90**

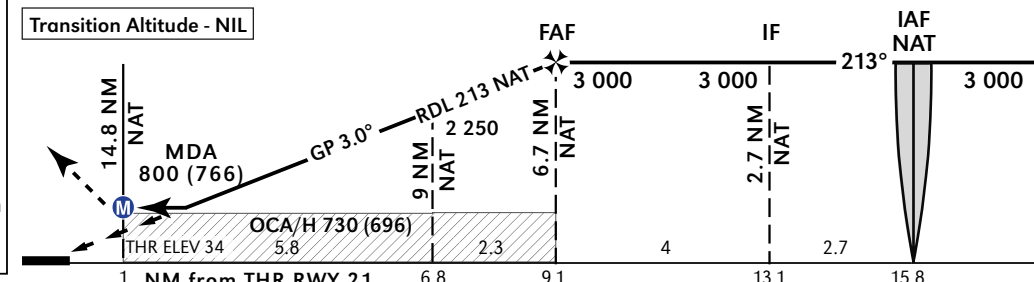
**TEL-AVIV / SDE DOV (LLSD)
VOR RWY 21**



MISSED APPROACH:

1. Due to ILS 12 to LLBG, Initiating before NAT 13D: Immediately turn right, climb 4 000 ft YOSEF and via KAFRI to VOR NAT and Hold.
2. Initiating after NAT 13D: Turn right to INTRO, remain at or below 1 000 ft until established northbound (do not overshoot NAT 17D). Continue climbing to INTRO 2 500 ft then climb YOSEF 4 000 ft, and via KAFRI to VOR NAT and Hold.

from NAT	D13.5	D11	D9	D6.7
from THR	2.3	4.8	6.8	9.1
ALTITUDE	820	1 615	2 250	3 000



A	Straight-in Approach and Circling			
B	MDA(H) 800 (766) - VIS 3 000m.			
C	NOT APPLICABLE			
D	NOT APPLICABLE			

RWY21 VOR Initial, Intermediate and Final Approach

Descent Angle	5.24% (3.00°)			
FIX	IAF (VOR NAT)	IF	FAF	MAPt
Fix Coordinates [WGS84]	32° 20' 02"N 034° 58' 08"E	32° 17' 52"N 034° 56' 13"E	32° 14' 40"N 034° 53' 23"E	32° 08' 10"N 034° 47' 39"E
Fix Formation Bearing [°True]	0	216.95	216.95	216.95
Fix Formation Distances [NM]	0	2.7	6.7	14.8

HOLDING

HOLDING FIX	Coordinates	INBOUND TRACK (Degrees)	MAX INDICATED AIRSPEED (Kts)	MIN/MAX HOLDING ALTITUDE (ft)	TIME/DISTANCE OUTBOUND	DIRECTION OF TURN
VOR NAT	32° 20' 02"N 034° 58' 08"E	213	230	A 3 000 - A 5 000	1 MIN	R