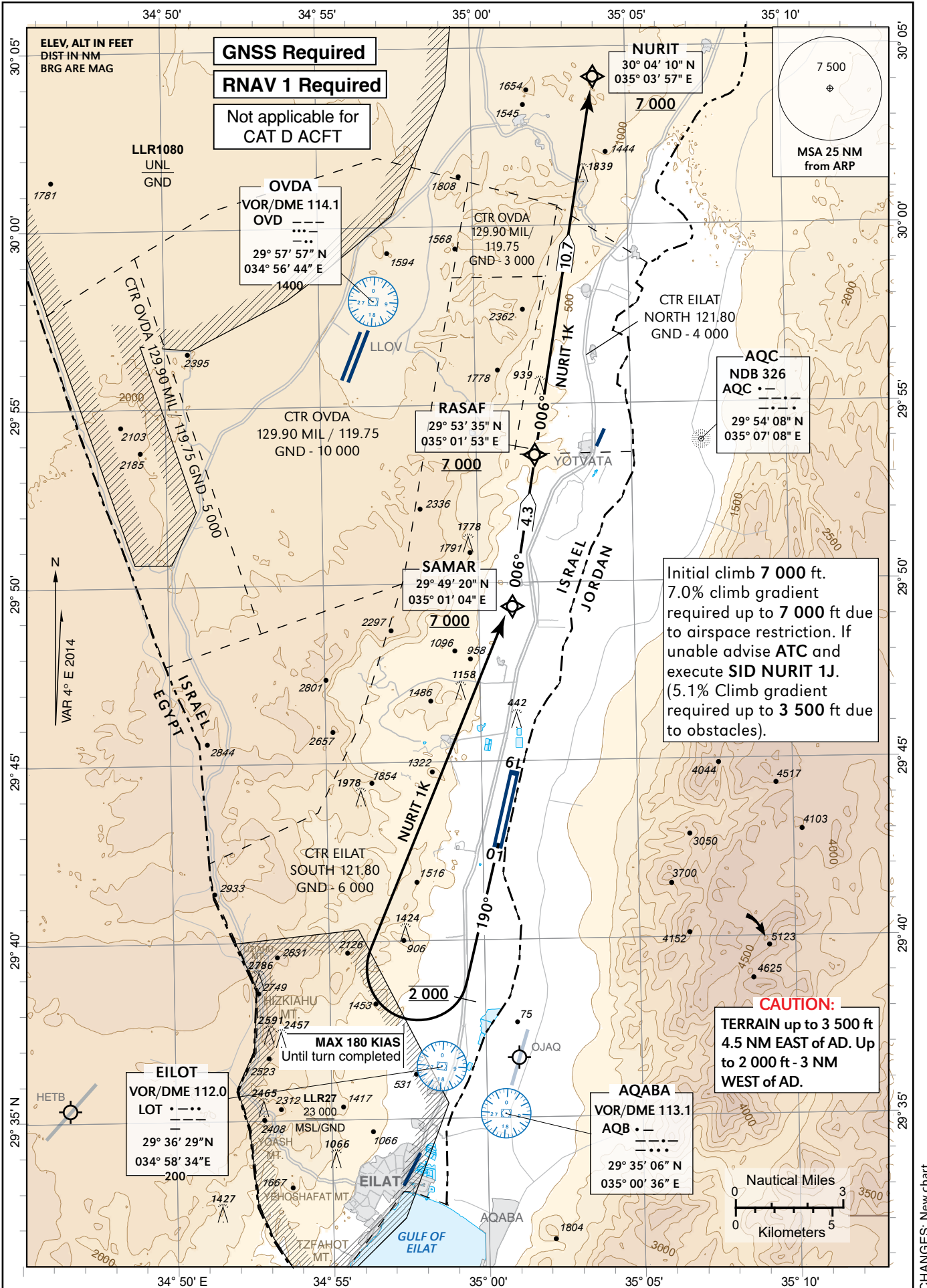


STANDARD INSTRUMENT
DEPARTURE
CHART (SID) - ICAO

TRANSITION ALTITUDE 18 000

ATIS	132.55
TWR	121.80
ACC	120.90

EILAT / ILAN &
ASSAF RAMON (LLER)
RWY 19
NURIT 1K



Initial climb 7 000 ft.
7.0% climb gradient
required up to 7 000 ft due to
airspace restriction. If
unable advise ATC and
execute SID NURIT 1J.
(5.1% Climb gradient
required up to 3 500 ft due
to obstacles).

CAUTION:
TERRAIN up to 3 500 ft
4.5 NM EAST of AD. Up
to 2 000 ft - 3 NM
WEST of AD.

Procedure: LLER RWY19 SID NURIT1K

Navigation Performance	Path Terminator (Recommended)	WPT Name	Lat./Long	Fly Over/By	Distance (NM)	Mag. (True) Track (Degrees)	Upper/Lower Limit (ft)	Speed Limit (Kts)	Remarks
RNAV1	CA					190 (193.7)	A 2 000	- 180	
RNAV1	DF	SAMAR	29° 49' 20" N 035° 01' 04" E	FB			A 7 000+	- 180	R
RNAV1	TF	RASAF	29° 53' 35" N 035° 01' 53" E	FB	4.3	006 (009.6)	A 7 000+		L
RNAV1	TF	NURIT	30° 04' 10" N 035° 03' 57" E	FB	10.7	006 (009.6)	A 7 000+		