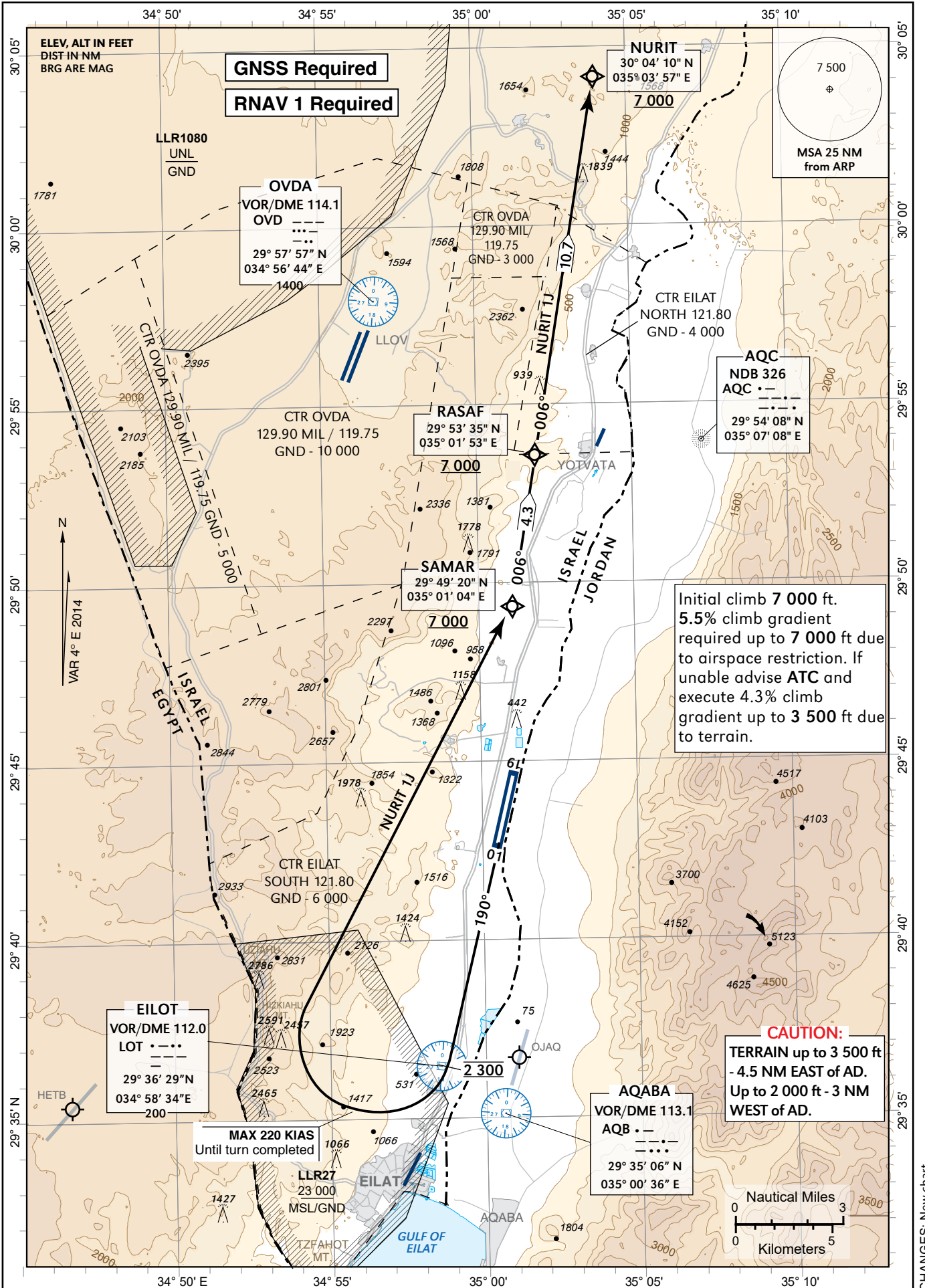


**STANDARD INSTRUMENT
DEPARTURE CHART
(SID) - ICAO**

TRANSITION ALTITUDE 18 000

ATIS	132.55
TWR	121.80
ACC	120.90

**EILAT / ILAN &
ASSAF RAMON (LLR)
RWY 19
NURIT 1J**



Procedure: LLER RWY19 SID NURIT1J

Navigation Performance	Path Terminator (Recommended)	WPT Name	Lat./Long	Fly Over/By	Distance (NM)	Mag. (True) Track (Degrees)	Upper/Lower Limit (ft)	Speed Limit (Kts)	Remarks
RNAV1	CA					190 (193.7)	A 2 300	- 220	
RNAV1	DF	SAMAR	29° 49' 20" N 035° 01' 04" E	FB			A 7 000+	- 220	R
RNAV1	TF	RASAF	29° 53' 35" N 035° 01' 53" E	FB	4.3	006 (009.6)	A 7 000+		L
RNAV1	TF	NURIT	30° 04' 10" N 035° 03' 57" E	FB	10.7	006 (009.6)	A 7 000+		