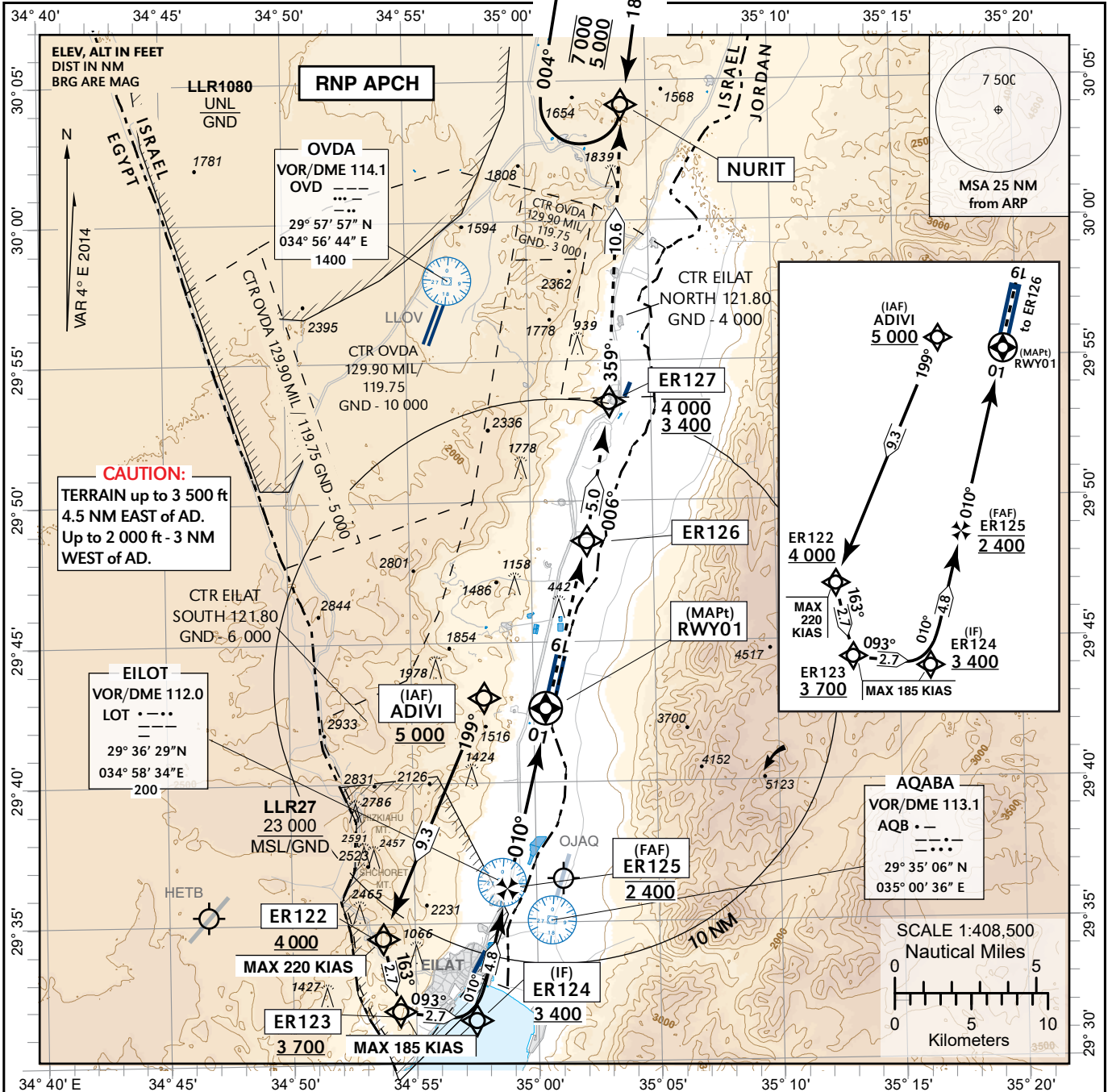


**INSTRUMENT  
APPROACH  
CHART - ICAO**

**AD ELEV**  
HEIGHTS RELATED TO  
THR RWY 01 - ELEV **252 ft**

**ATIS 132.55  
ACC 120.90  
TWR 121.80**

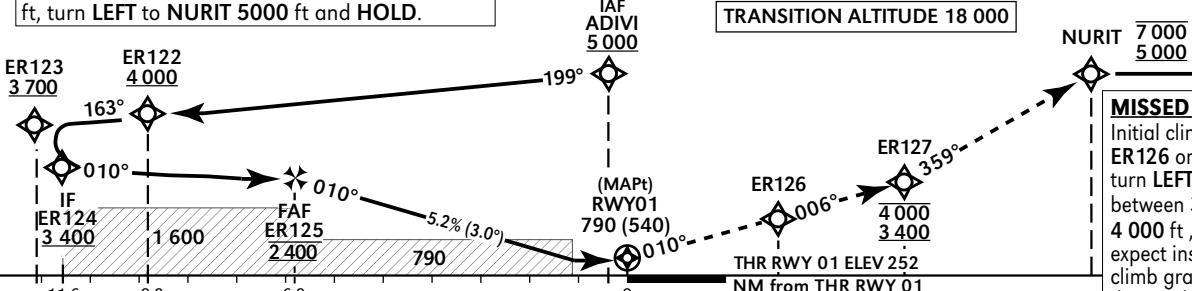
**EILAT/ILAN &  
ASSAF RAMON (LLER)  
RNP RWY 01**



**COMMUNICATION FAILURE:**  
Initial climb 4 000 ft, to ER126 on course 010°, turn LEFT to ER127 between 3 400 ft and 4 000 ft, turn LEFT to NURIT 5000 ft and HOLD.

RWY 01	6 NM	5 NM	4 NM	3 NM	2 NM
ALT (HAT)	2 210 (1 958)	1 890 (1 638)	1 580 (1 328)	1 260 (1 008)	940 (688)

**TRANSITION ALTITUDE 18 000**



**MISSED APPROACH:**  
Initial climb 4 000 ft, to ER126 on course 010°, turn LEFT to ER127 between 3 400 ft and 4 000 ft, contact ATC and expect instructions. 4.5% climb gradient required due to obstacles.

OCA (H)		A	B	C	D	Circling	N/A			
LNAV	2.5%	790 (540)								
LNAV	4.5%	620 (370)				GS	KT			
LNAV/VNAV*	2.5%	610 (360)	620 (370)	640 (390)	670 (420)			80	100	
	4.5%	510 (260)	520 (270)	530 (280)	530 (280)	120	140			
* BARO-VNAV Temperature MNM -10C/MAX 60 C		ROD: 5.2%		ft/min	424	531	637	743	849	955

Procedure: LLER RNP RWY 01

navigation performance	path terminator (Recommended)	WPT Name	Lat./Long	Fly Over/By	Distance (NM)	Mag./True Track	Upper/Lower Limit	Speed Limit (Kts)	Remarks
RNP APCH	IF	ADIVI	29° 43' 04.9" N 034° 57' 57.2" E	FB			A 5000 +		IAF
RNP APCH	TF	ER122	29° 34' 31.4" N 034° 53' 42.3" E	FB	9.3	199° Mag 203.5° True	A 4000 +	-220	
RNP APCH	TF	ER123	29° 31' 55.7" N 034° 54' 22.0" E	FB	2.7	163° Mag 167.4° True	A 3700 +	-185	L
RNP APCH	TF	ER124	29° 31' 34.9" N 034° 57' 28.7" E	FB	2.7	093° Mag 097.3° true	A 3400 +	-185	IF L
RNP APCH	TF	ER125	29° 36' 16.0" N 034° 58' 47.1" E	FB	4.8	010° Mag 013.7° true	A 2400		FAF L
RNP APCH	CF	RWY01	29° 42' 41.0" N 035° 00' 34.8" E	FO		010° Mag 013.7° true			MAPt
RNP APCH	TF	ER126	29° 48' 37.4" N 035° 02' 14.6" E	FB		010° Mag 013.7° true			
RNP APCH	TF	ER127	29° 53' 34.8" N 035° 03' 15.6" E	FB	5.0	006° Mag 110.1° True	A 3400 + A 4000 -		
RNP APCH	TF	NURIT	30° 04' 10.0" N 035° 03' 57.0" E	FB	10.6	359° Mag 003.2° True	A 5000 + A 7000 -		
RNAV-1	HM	NURIT	30° 04' 10.0" N 035° 03' 57.0" E	FO		184° Mag 187.9° True	A 5000 + A 7000 -		R