

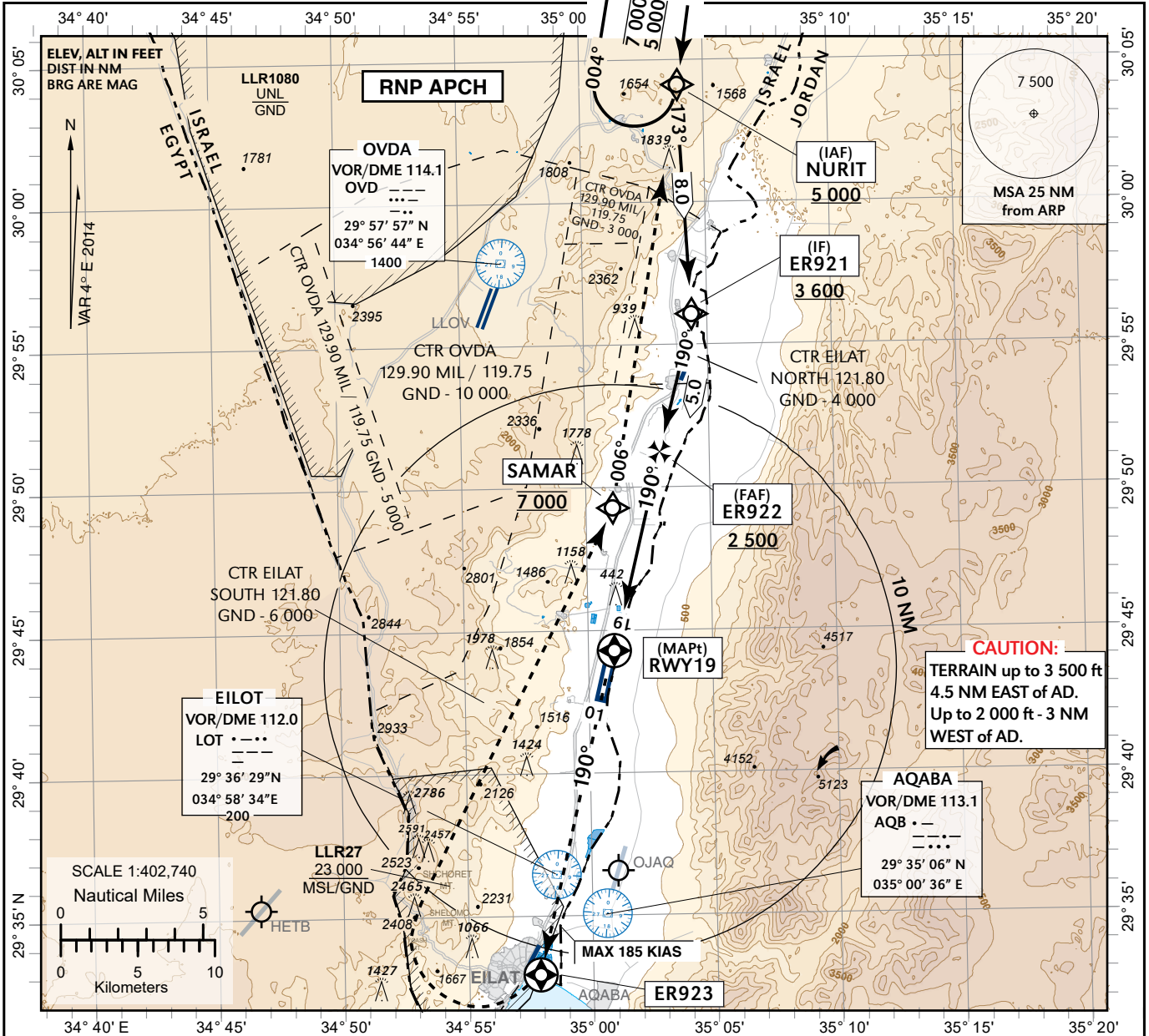
**INSTRUMENT
APPROACH
CHART - ICAO**

AD ELEV
HEIGHTS RELATED TO
THR RWY 19 - ELEV **272 ft**

TBD

**ATIS 132.55
ACC 120.90
TWR 121.80**

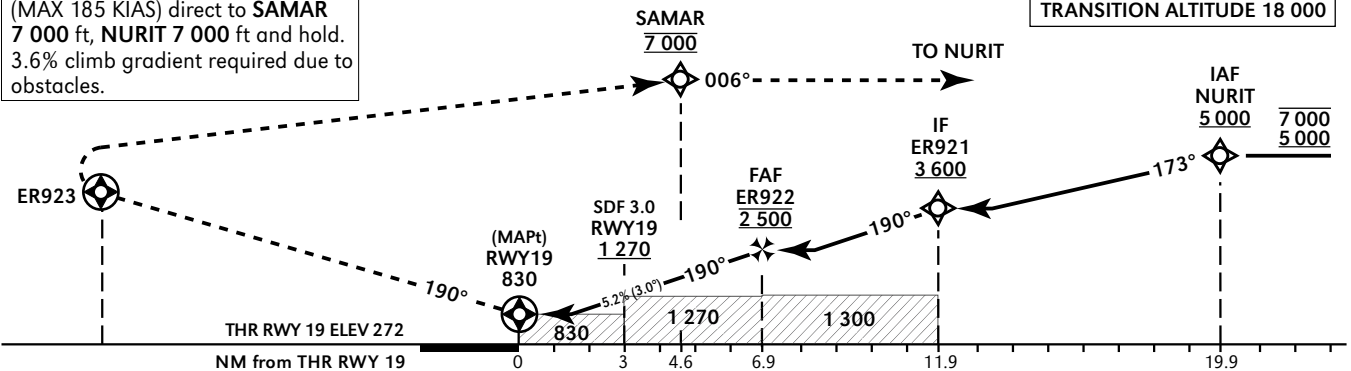
**EILAT/ILAN &
ASSAF RAMON (LLER)
RNP RWY 19**



MISSED APPROACH:
Initial climb 7 000 ft, Climb on course 190° to ER923, turn **RIGHT** (MAX 185 KIAS) direct to **SAMAR 7 000 ft, NURIT 7 000 ft** and hold. 3.6% climb gradient required due to obstacles.

	RWY 19	2 NM	3 NM	4 NM	5 NM	6 NM
ALT (HAT)		960 (688)	1 280 (1 008)	1 590 (1 318)	1 910 (1 638)	2 230 (1 958)

TRANSITION ALTITUDE 18 000



OCA (H)		A	B	C	D		
LNAV	2.5%	830 (560)				Circling	
	4.0%	690 (420)					
LNAV/ VNAV *	2.5%	640 (370)	650 (380)	670 (400)	690 (420)	N/A	
	4.0%	580 (310)	590 (320)	600 (330)	610 (340)		

GS	KT	80	100	120	140	160	180
ROD: 5.2%	ft/min	421	527	632	737	843	948

* **BARO-VNAV Temperature: MNM -10C/MAX 60C.**

CHANGES: New chart

Procedure: LLER RNP RWY 19

navigation performance	path terminator (Recommended)	WPT Name	Lat./Long	Fly Over/By	Distance (NM)	Mag./True Track	Upper/Lower Limit	Speed Limit (Kts)	Remarks
RNAV1	IF	NURIT	30° 04' 10.0" N 035° 03' 57.0" E	FB			A 5000 +		IAF
RNP APCH	TF	ER921	29° 56' 09.3" N 035° 04' 21.3" E	FB	8.0	173° Mag 177.5° True	A 3600 +		IF
RNP APCH	TF	ER922	29° 51' 17.2" N 035° 02' 59.3" E	FB	5.0	190° Mag 193.7° True	A 2500 +		FAF R
RNP APCH	CF	RWY19	29° 44' 34.6" N 035° 01' 06.5" E	FO		190° Mag 193.7° True	A 322 +		MAPt
RNP APCH	CF	ER923	29° 33' 06.3" N 034° 57' 54.3" E	FO		190° Mag 193.7° True		-185	
RNP APCH	DF	SAMAR	29° 49' 20.0" N 035° 01' 04.0" E	FB			A 7000		R
RNP APCH	TF	NURIT	30° 04' 10.0" N 035° 03' 57.0" E	FB	15.0	006° Mag 009.6° True	A 7000 +		L
RNP APCH	HM	NURIT	30° 04' 10.0" N 035° 03' 57.0" E	FO		184° Mag 187.9° True	A 5000 + A 7000 -		R