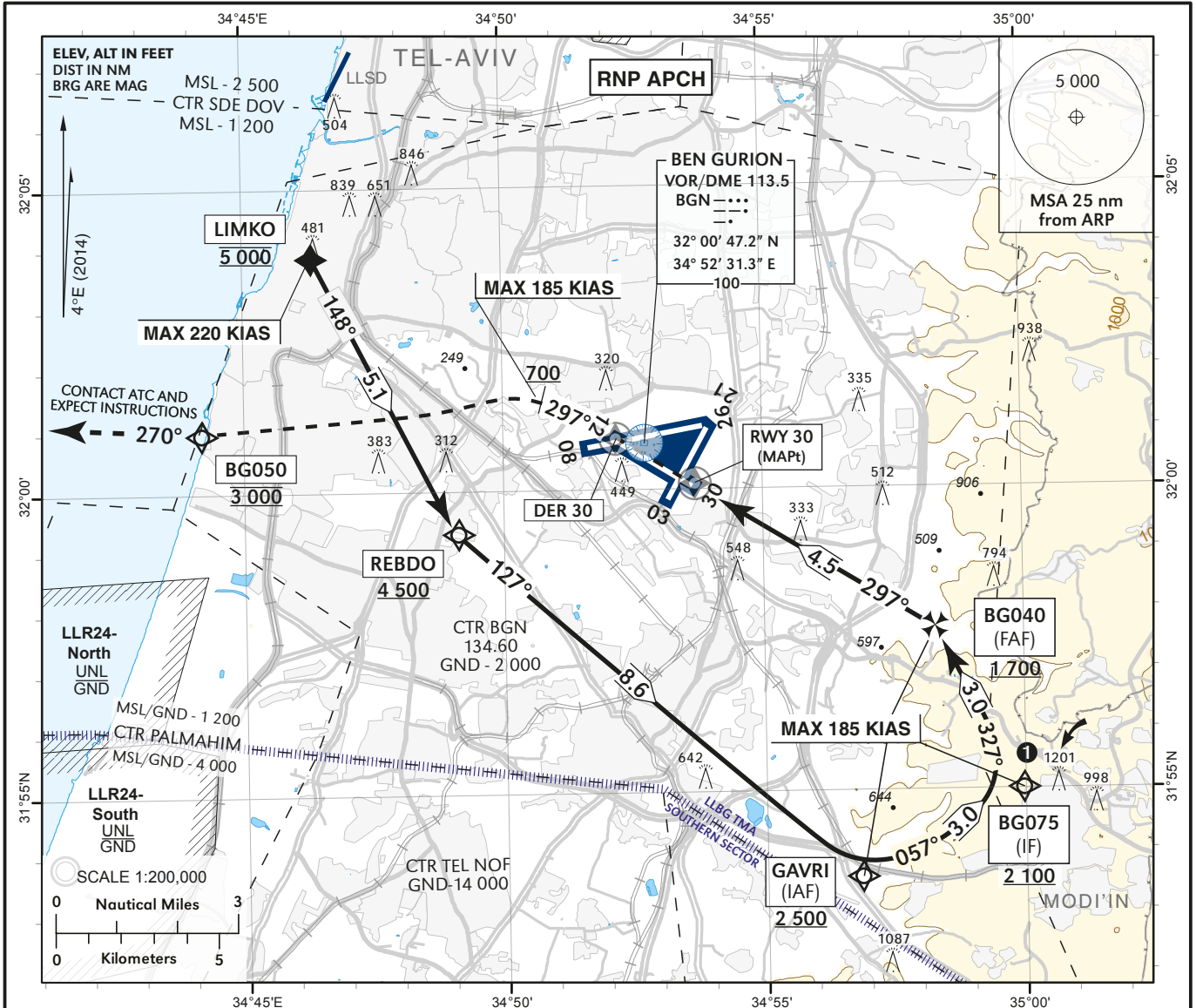


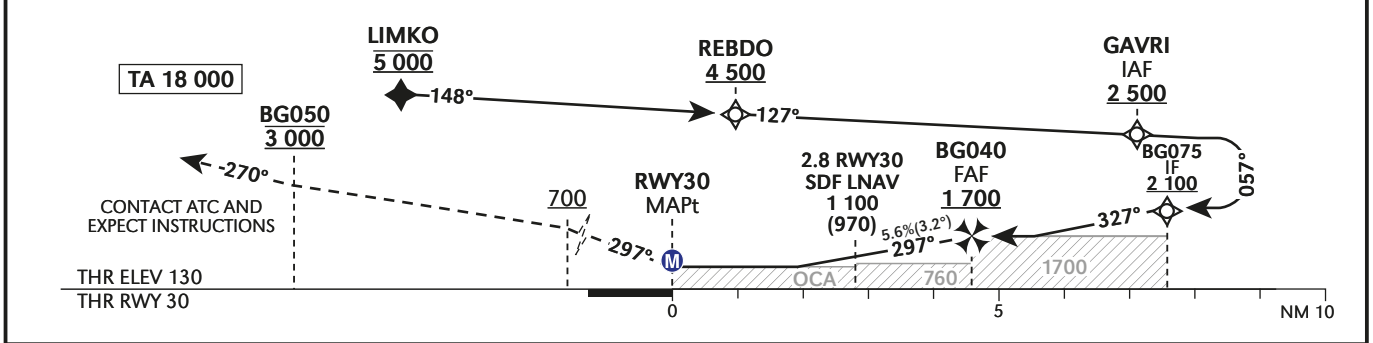
INSTRUMENT AD ELEV **134 ft**
APPROACH HEIGHTS RELATED TO
CHART - ICAO THR RWY 30 ELEV **130 ft**

APP 120.50
 TWR 134.60
 ATIS 132.50

TEL-AVIV/BEN-GURION (LLBG)
RNP X RWY 30



DIST THR	2	3	4	4.5
ALT (HGT)	870 (740)	1 210 (1 080)	1 550 (1 420)	1 700 (1 570)



MISSED APPROACH: Initial climb 3000 ft. Climb on course 297°, at or above 700 ft, Not before DER 30, turn LEFT (MAX 185 KIAS) direct to BG050 at 3000ft (MAX 185 KIAS). Continue on track 270° at 3000 ft, contact ATC and expect instructions.

COMMUNICATION FAILURE: Initial climb 3000 ft. Climb on course 297° at or above 700 ft, Not before DER 30, turn LEFT (MAX 185 KIAS) direct to BG050 at 3000 ft (MAX 185 KIAS) turn RIGHT To GODED at 5000 ft, join the holding, perform one holding pattern and execute the same approach again.

BG050 at 3000ft requires a 5.6% minimum climb gradient due to airspace restrictions, if unable inform ATC.

① VFR traffic may be present East of WPT BG075 and South of WPT GAVRI.

OCA (OCH)		A	B	C	D		
LNAV	2.5%	580 (450)					
CIRCLING		N/A					
GS	kt	80	100	120	140	160	180
ROD: 5.6%	ft/min	453	567	680	794	907	1020

Procedure: RNP X RWY 30

Navigation Specification	Path Descriptor (Recommended)	Waypoint Identifier	Latitude Longitude	Flyover	Course/Track M° (T°)	Turn Direction	Distance (NM)	Altitude (ft)	Speed (Kts)	Remarks
RNP APCH	IF	LIMKO	32° 03' 48.0" N 034° 46' 18.0" E	-		-	-	@5 000	-220	
RNP APCH	TF	REBDO	31° 59' 17.0" N 034° 49' 04.0" E	-	148 (152.4)	-	5.1	+4 500	-	
RNP APCH	TF	GAVRI	31° 53' 35.1" N 034° 56' 43.6" E	-	127 (131.4)	L	8.6	+2 500	-185	IAF
RNP APCH	TF	BG075	31° 55' 01.3" N 034° 59' 49.3" E	-	057 (061.4)	L	3.0	+2 100	-185	IF
RNP APCH	TF	BG040	31° 57' 39.8" N 034° 58' 08.2" E	-	327 (331.4)	L	3.0	+1 700	-185	FAF
RNP APCH	TF	RWY30	31° 59' 59.9" N 034° 53' 39.1" E	FO	297 (301.4)	L	4.5	+180	-185	MAPt

Standard missed approach

Navigation Specification	Path Descriptor (Recommended)	Waypoint Identifier	Latitude Longitude	Flyover	Course/Track M° (T°)	Turn Direction	Distance (NM)	Altitude (ft)	Speed (Kts)	Remarks
RNP APCH	TF	DER30	32° 00' 51" N 034° 52' 00" E	FO	297 (301.4)	L	1.7	+700	-185	
RNP APCH	CA	-		-	297 (301.4)		-	+700	-185	
RNP APCH	DF	BG050	32° 00' 55.9" N 034° 44' 05.9" E	-		L	-	@3 000		
RNP APCH	FM	BG050	32° 00' 55.9" N 034° 44' 05.9" E	-	270 (274.4)	R	-	@3 000		

Non Precision Final Approach – Slope (Descent angle)	5.60% (3.20°)
--	------------------

Holding Identification

Holding Fix	Latitude Longitude	Inbound Course/Track M° (T°)	Altitude (ft)	Outbound Time / Distance	Turn Direction
GODED	32° 09' 54" N 034° 34' 22" E	116.0 (120.3)	+5 000	1 Min	L