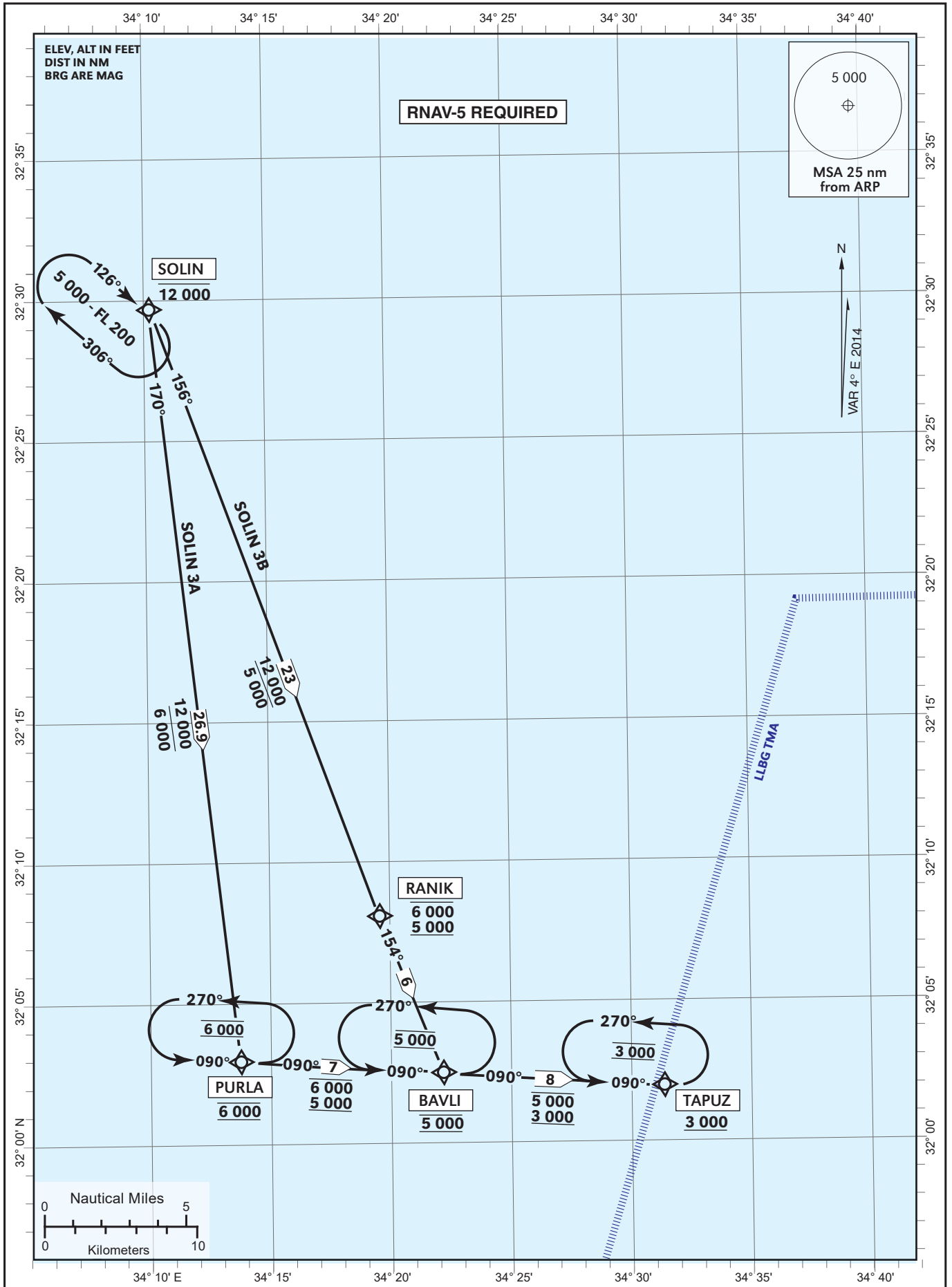


STANDARD ARRIVAL
CHART- INSTRUMENT
(RNAV STAR) - ICAO

TRANSITION ALT **18 000**

ATIS Arrival	132.50
ACC	121.40
APP	120.50
TWR	134.60

TEL-AVIV / BEN-GURION (LLBG)
RWY 08
SOLIN 3A, SOLIN 3B



Procedure: LLBG STAR RNAV1 SOLIN 3A/SOLIN 3B RWY 08

SOLIN 3A RNAV1

Serial Number	Navigation Specifications	path terminator (Recommended)	WPT Identifier	Fly Over/ By	Lat./Long	Mag. Track (True)	Distance	Turn direction	Upper/ Lower Limit (Altitude)	Speed Limit (Kts)	Remarks
001	RNAV5	IF	SOLIN	FB	32° 29' 41" N 034° 10' 15" E				-12 000		
002	RNAV5	TF	PURLA	FB	32° 02' 56" N 034° 13' 47" E	170 (174)	26.9		@6 000		
003	RNAV5	TF	BAVLI	FB	32° 02' 29" N 034° 22' 13" E	090 (094)	7.0	L	@5 000		
004	RNAV 5	TF	TAPUZ	FB	32° 01' 57" N 034° 31' 24" E	090 (094)	8.0		+ 3 000		

SOLIN 3B RNAV1

Serial Number	Navigation Specifications	path terminator (Recommended)	WPT Identifier	Fly Over	Lat./Long	Mag. Track (True)	Distance	Turn direction	Upper/ Lower Limit (Altitude)	Speed Limit (Kts)	Remarks
001	RNAV5	IF	SOLIN	FB	32° 29' 41" N 034° 10' 15" E				-12 000		
002	RNAV5	TF	RANIK	FB	32° 08' 04" N 034° 19' 36" E	156 (160)	23.0		-6 000 +5 000		
003	RNAV5	TF	BAVLI	FB	32° 02' 29" N 034° 22' 13" E	156 (160)	6.0		@5 000		
004	RNAV5	TF	TAPUZ	FB	32° 01' 57" N 034° 31' 24" E	090 (094)	8.0	L	+3 000		