

DEPARTURE TO
ATS ROUTE - VISUAL

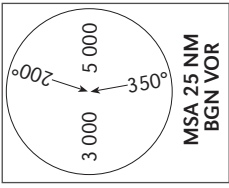
AD ELEV 43 ft

TRANSITION ALT 18 000

TWR (SDE DOV)	124.00
BEN GURION TMA	119.50
ACC (PLUTO)	118.40
ATIS	122.90

TEL-AVIV / SDE-DOV (LLSD)

RWYs 03, 21
MERVA 1A/1B
PEPIR 1A/1B
ADLOD 1A/1B

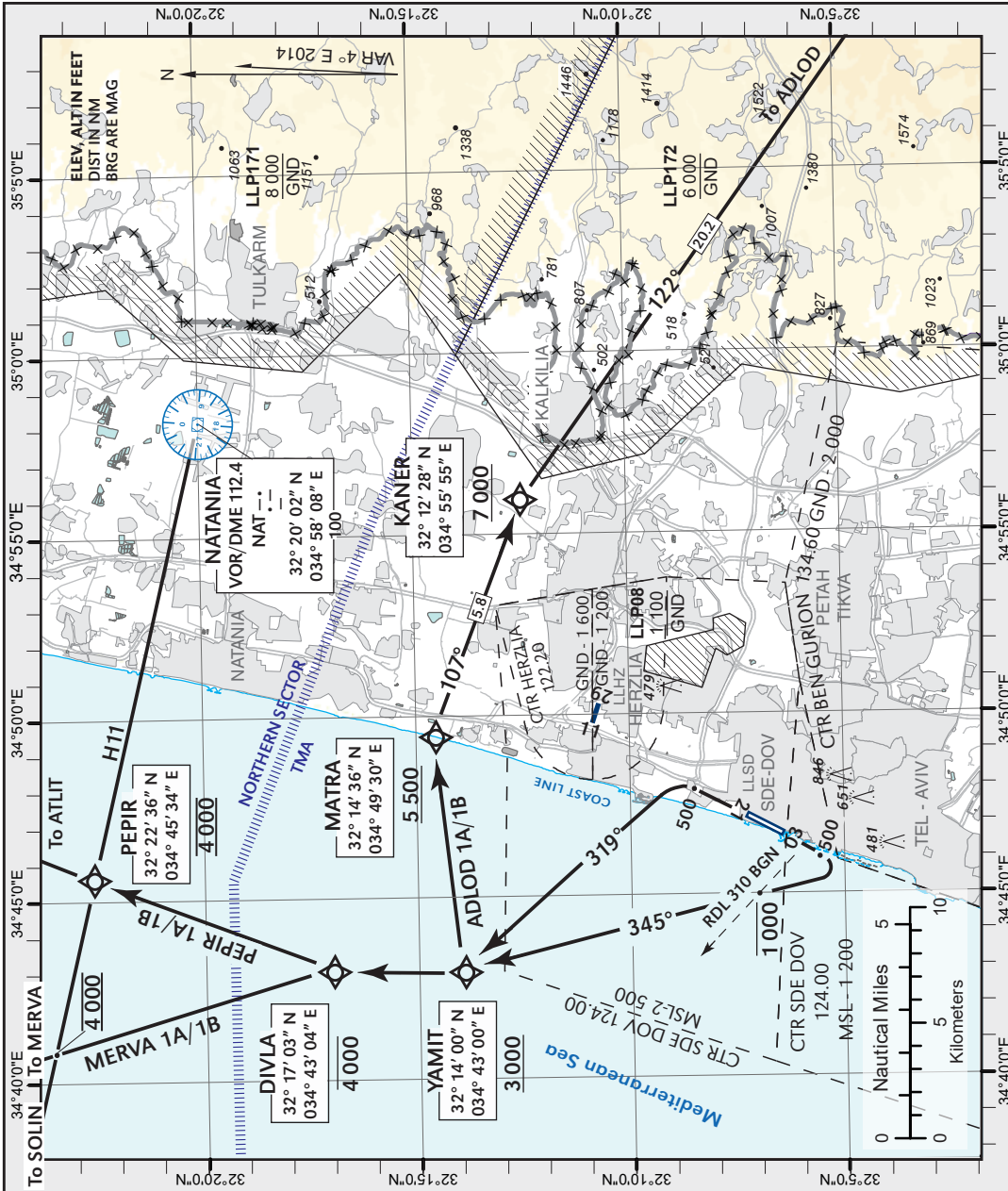


GENERAL INSTRUCTIONS

When accepting a visual departure, climb straight ahead, maintain VMC and own terrain separation until turning to YAMIT. **MERVA 1A/ PEPIR 1A/ ADLOD 1A** departures requires ceiling not below 800 ft and visibility to be no less than 800 m.

MERVA 1B/ PEPIR 1B/ ADLOD 1B departures requires ceiling not below 800 ft and visibility to be no less than 2000 m.

These departures require a minimum climb gradient up to 3 500 ft as follows:
Take-off RWY 21 - 350 per NM (5.7%)
Take-off RWY 03 - 380 per NM (6.2%)



Ground speed	KT	90	110	130	150	180
RWY 03 - MNM ROC	FPM	570	700	825	950	1140
RWY 21 - MNM ROC	FPM	525	640	760	875	1050

SPEED RESTRICTION
Max 250 KIAS below 10 000 ft

NON RNAV ACFT -
Advise "NON-RNAV" to ATC before start up.
MERVA 1A/1B PEPIR 1A/1B - after YAMIT, turn RIGHT 360 and expect radar vectors.
ADLOD 1A/1B - after YAMIT, turn RIGHT 105 and expect radar vectors.

DEPARTURE	RWY	TAKE - OFF
MERVA 1A/ PEPIR 1A/ ADLOD 1A (RNAV 1 Required)	03	Climb straight ahead, at 500 ft turn LEFT to YAMIT.
MERVA 1B/ PEPIR 1B/ ADLOD 1B (RNAV 1 Required)	21	Climb straight ahead, at 500 ft turn RIGHT to YAMIT. Remain below 1 000 ft until passing RDL 310 BGN northbound.

CHANGES: Routing, Naming, Comm. Failure withdrawn, WPT's added.