

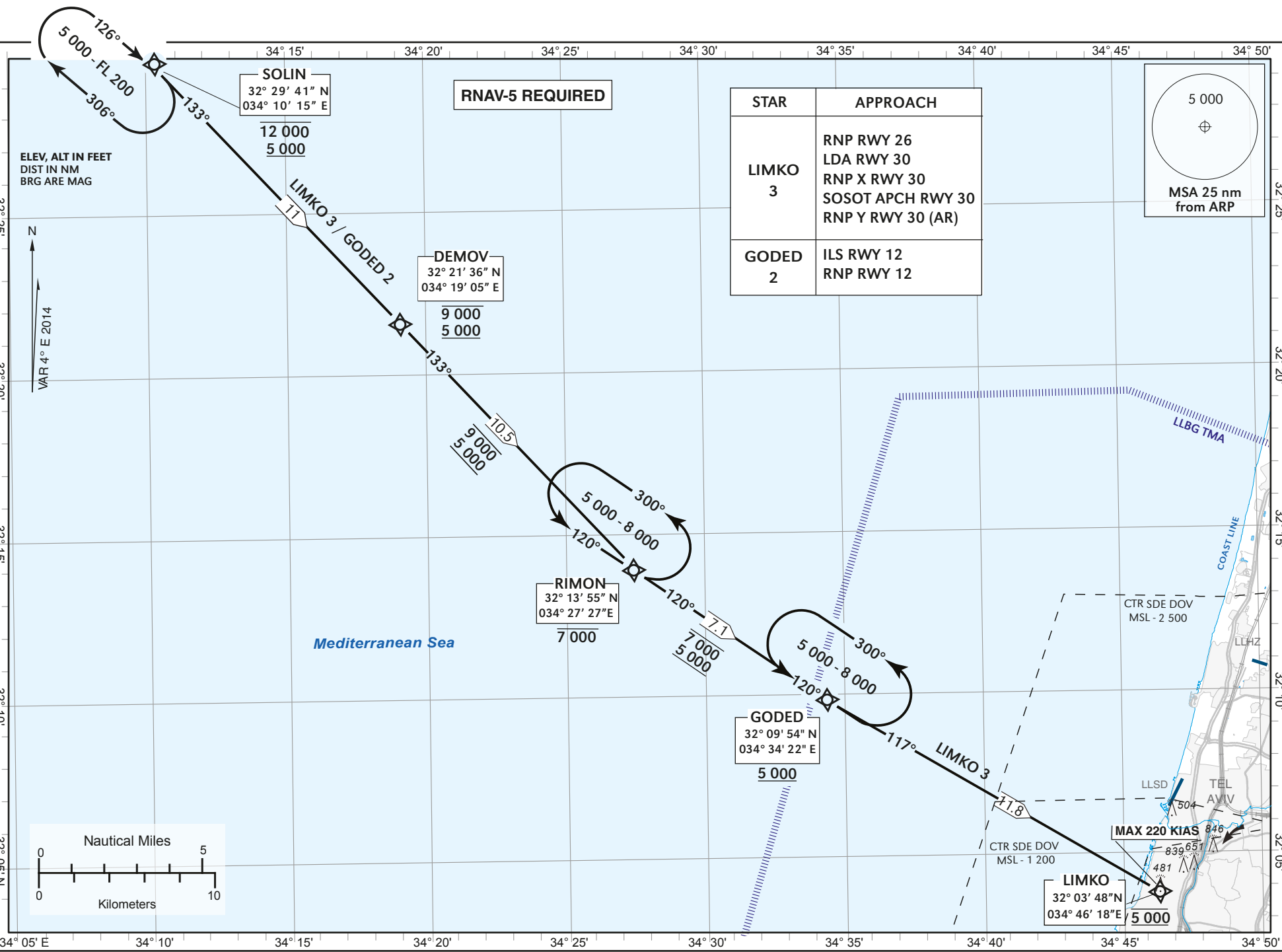
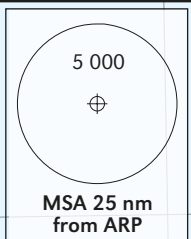
STANDARD ARRIVAL  
CHART - INSTRUMENT  
(RNAV STAR) - ICAO

TRANSITION ALT 18 000

ATIS Arrival	132.50
ACC	121.40
APP	120.50
TWR	134.60

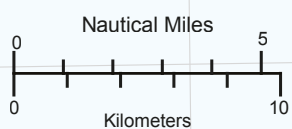
TEL-AVIV / BEN-GURION (LLBG)  
RWY's 12, 26, 30  
LIMKO 3, GODED 2

STAR	APPROACH
LIMKO 3	RNP RWY 26 LDA RWY 30 RNP X RWY 30 SOSOT APCH RWY 30 RNP Y RWY 30 (AR)
GODED 2	ILS RWY 12 RNP RWY 12



ELEV, ALT IN FEET  
DIST IN NM  
BRG ARE MAG

VAR 4° E 2014



CHANGE: min. altitude added, STAR GODED 2 added