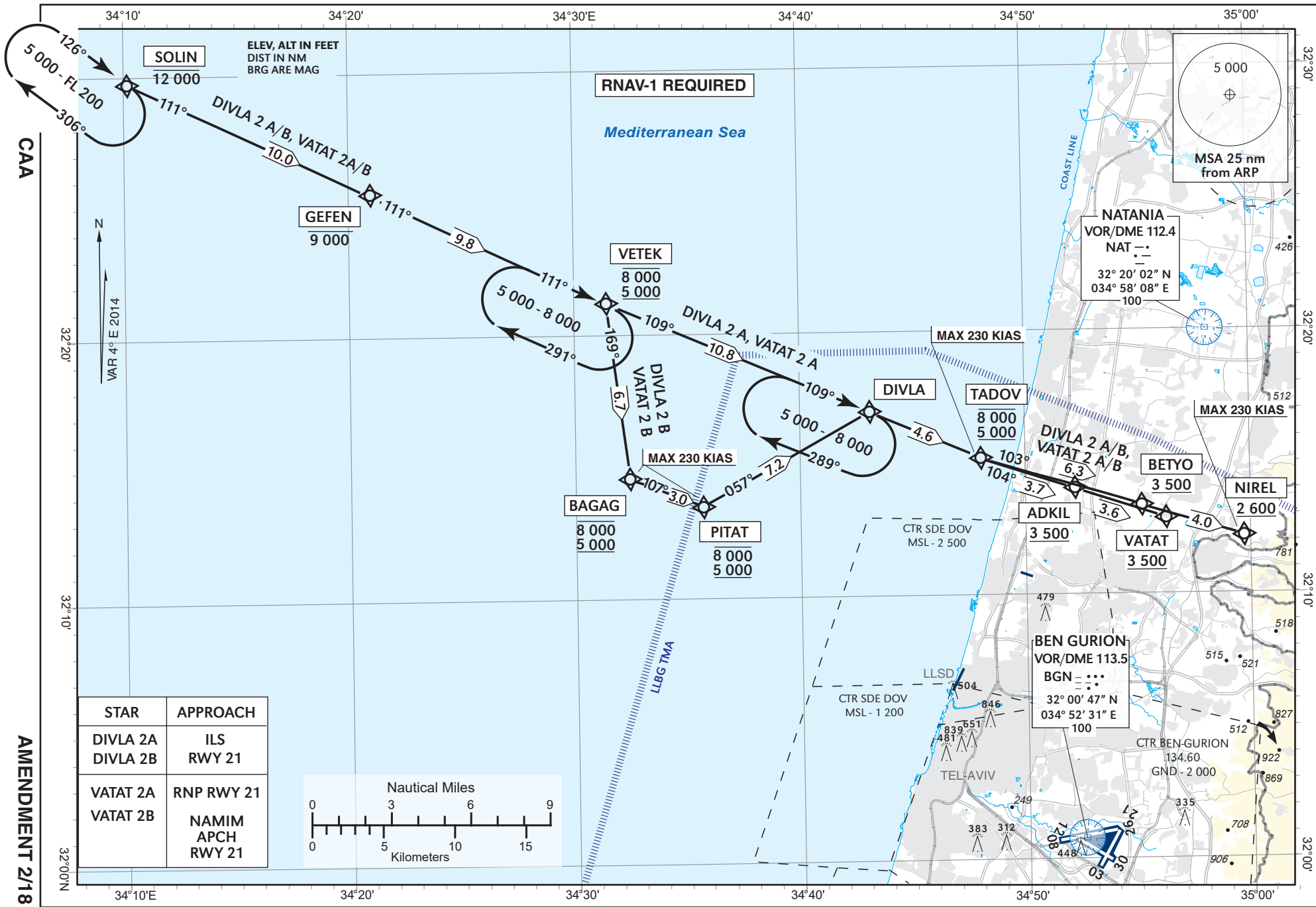


**STANDARD ARRIVAL -
(RNAV STAR) - ICAO**

TRANSITION ALT 18 000

ATIS Arrival 132.50
ACC 121.40
ARR 131.10
TWR 132.10

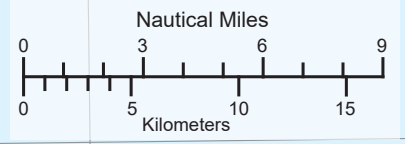
**TEL-AVIV / BEN-GURION (LLBG)
RWY 21**
DIVLA 2A, DIVLA 2B
VATAT 2A, VATAT 2B



CAA

AMENDMENT 2/18

STAR	APPROACH
DIVLA 2A DIVLA 2B	ILS RWY 21
VATAT 2A VATAT 2B	RNP RWY 21 NAMIM APCH RWY 21



CHANGES: Coding table, speed restriction@NIREL, ATIS added

Procedure: LLBG STAR RNAV1 DIVLA 2A/DIVLA 2B, VATAT 2A,2B RWY 21

DIVLA 2A RNAV1

Serial Number	Navigation Specifications	path terminator (Recommended)	WPT Identifier	Lat./Long	Fly Over/ By	Distance	Mag. Track (True)	Turn direction	Upper/Lower Limit (Altitude)	Speed Limit (Kts)	Remarks
001	RNAV1	IF	SOLIN	32° 29' 41" N 034° 10' 15" E	FB				-12000		
002	RNAV1	TF	GEFEN	32° 25' 26" N 034° 20' 59" E	FB	10.0	111 (115)		-9000		
003	RNAV1	TF	VETEK	32° 21' 17" N 034° 31' 24" E	FB	9.8	111 (115)		-8000 +5000		
004	RNAV 1	TF	DIVLA	32° 17' 03" N 034° 43' 04" E	FB	10.8	109 (113.1)		-8000 +5000		
005	RNAV 1	TF	TADOV	32° 15' 15" N 034° 48' 00" E	FB	4.6	109 (113.1)		-8000 +5000	-230	
006	RNAV 1	TF	BETYO	32° 13' 24" N 034° 55' 08" E	FB	6.3	103 (107)		+3500		
007	RNAV 1	TF	NIREL	32° 12' 13" N 034° 59' 40" E	FB	4.0	103 (107)		+2600	-230	

DIVLA 2B RNAV1

Serial Number	Navigation Specifications	path terminator (Recommended)	WPT Identifier	Lat./Long	Fly Over/ By	Distance	Mag. Track (True)	Turn direction	Upper/Lower Limit (Altitude)	Speed Limit (Kts)	Remarks
001	RNAV1	IF	SOLIN	32° 29' 41" N 034° 10' 15" E	FB				-12000		
002	RNAV1	TF	GEFEN	32° 25' 26" N 034° 20' 59" E	FB	10.0	111 (115)		-9000		
003	RNAV1	TF	VETEK	32° 21' 17" N 034° 31' 24" E	FB	9.8	111 (115)		-8000 +5000		
004	RNAV1	TF	BAGAG	32° 14' 38" N 034° 32' 23" E	FB	6.7	169 (172.8)	R	-8000 +5000	-230	
005	RNAV1	TF	PITAT	32° 13' 33" N 034° 35' 38" E	FB	3.0	107 (111.4)	L	-8000 +5000	-230	
006	RNAV 1	TF	DIVLA	32° 17' 03" N 034° 43' 04" E	FB	7.2	057 (061)	L	-8000 +5000		
007	RNAV 1	TF	TADOV	32° 15' 15" N 034° 48' 00" E	FB	4.6	109 (113.1)	R	-8000 +5000	-230	
008	RNAV 1	TF	BETYO	32° 13' 24" N 034° 55' 08" E	FB	6.3	103 (107)		+3500		
009	RNAV 1	TF	NIREL	32° 12' 13" N 034° 59' 40" E	FB	4.0	103 (107)		+2600	-230	

VATAT 2A RNAV1

Serial Number	Navigation Specifications	path terminator (Recommended)	WPT Identifier	Lat./Long	Fly Over/ By	Distance	Mag. Track (True)	Turn direction	Upper/Lower Limit (Altitude)	Speed Limit (Kts)	Remarks
001	RNAV1	IF	SOLIN	32° 29' 41" N 034° 10' 15" E	FB				-12000		
002	RNAV1	TF	GEFEN	32° 25' 26" N 034° 20' 59" E	FB	10.0	111 (115)		-9000		
003	RNAV1	TF	VETEK	32° 21' 17" N 034° 31' 24" E	FB	9.8	111 (115)		-8000 +5000		
004	RNAV 1	TF	DIVLA	32° 17' 03" N 034° 43' 04" E	FB	10.8	109 (113.1)		-8000 +5000		
005	RNAV 1	TF	TADOV	32° 15' 15" N 034° 48' 00" E	FB	4.6	109 (113.1)		-8000 +5000	-230	
006	RNAV 1	TF	ADKIL	32° 14' 03" N 034° 52' 10" E	FB	3.7	104 (108)		+3500		
007	RNAV 1	TF	VATAT	32° 13' 00" N 034° 56' 13" E	FB	3.6	104 (108)		+3500		

VATAT 2B RNAV1

Serial Number	Navigation Specifications	path terminator (Recommended)	WPT Identifier	Lat./Long	Fly Over/ By	Distance	Mag. Track (True)	Turn direction	Upper/Lower Limit (Altitude)	Speed Limit (Kts)	Remarks
001	RNAV1	IF	SOLIN	32° 29' 41" N 034° 10' 15" E	FB				-12000		
002	RNAV1	TF	GEFEN	32° 25' 26" N 034° 20' 59" E	FB	10.0	111 (115)		-9000		
003	RNAV1	TF	VETEK	32° 21' 17" N 034° 31' 24" E	FB	9.8	111 (115)		-8000 +5000		
004	RNAV1	TF	BAGAG	32° 14' 38" N 034° 32' 23" E	FB	6.7	169 (172.8)	R	-8000 +5000	-230	
005	RNAV1	TF	PITAT	32° 13' 33" N 034° 35' 38" E	FB	3.0	107 (111.4)	L	-8000 +5000	-230	
006	RNAV 1	TF	DIVLA	32° 17' 03" N 034° 43' 04" E	FB	7.2	057 (061)	L	-8000 +5000		
007	RNAV 1	TF	TADOV	32° 15' 15" N 034° 48' 00" E	FB	4.6	109 (113.1)	R	-8000 +5000	-230	
008	RNAV 1	TF	ADKIL	32° 14' 03" N 034° 52' 10" E	FB	3.7	104 (108)		+3500		
009	RNAV 1	TF	VATAT	32° 13' 00" N 034° 56' 13" E	FB	3.6	104 (108)		+3500		