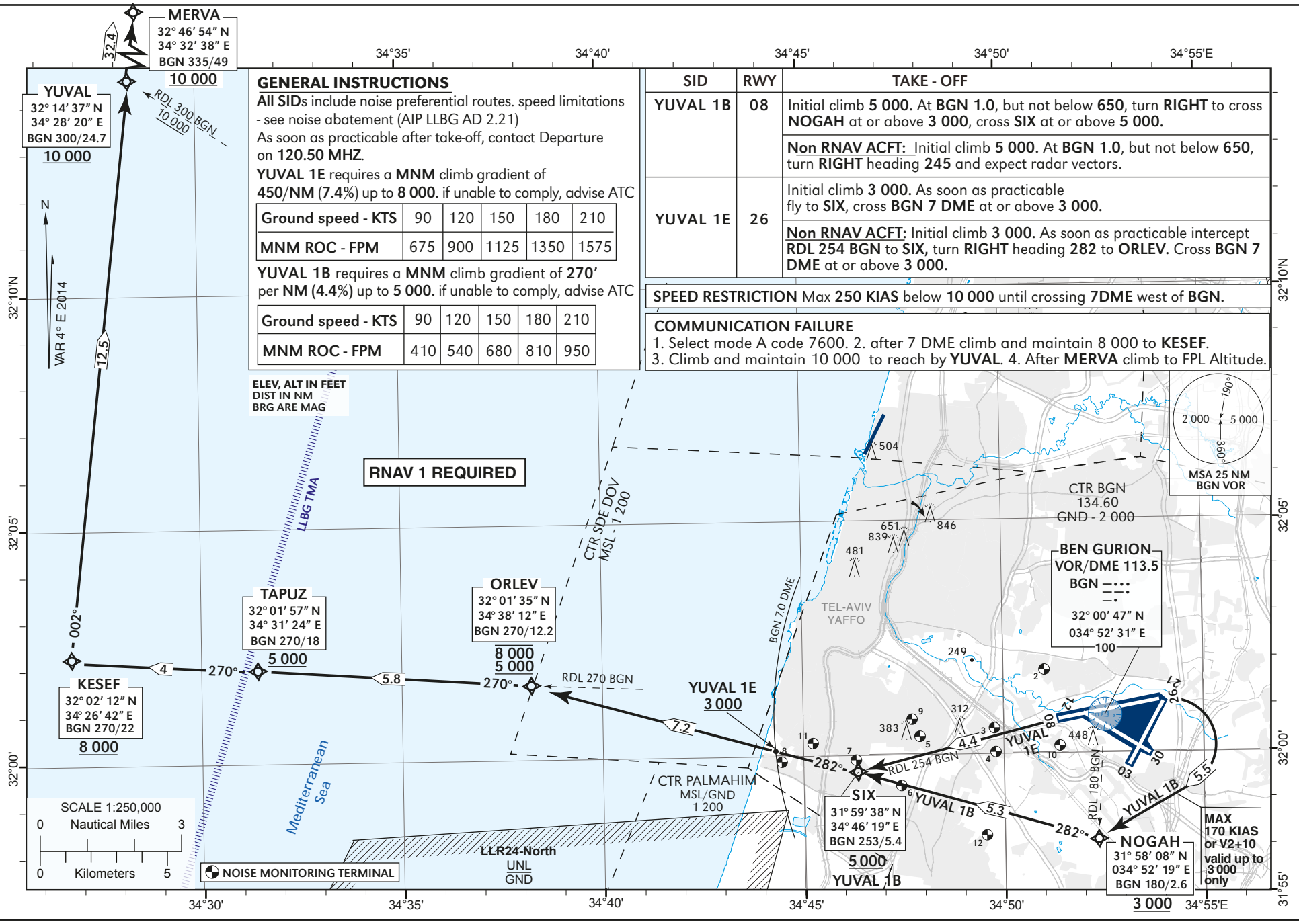


STANDARD DEPARTURE CHART-
INSTRUMENT (SID) - ICAO

TRANSITION ALT 18 000

ATIS Departure 132.80
TWR 134.60
DEP 120.50
ACC 121.40

TEL-AVIV / BEN-GURION (LLBG)
RWY 08, 26
YUVAL 1B, YUVAL 1E



CAA

AMENDMENT 2/18

GENERAL INSTRUCTIONS
All SIDs include noise preferential routes. speed limitations - see noise abatement (AIP LLBG AD 2.21)
As soon as practicable after take-off, contact Departure on 120.50 MHZ.
YUVAL 1E requires a MNM climb gradient of 450/NM (7.4%) up to 8 000. if unable to comply, advise ATC

Ground speed - KTS	90	120	150	180	210
MNM ROC - FPM	675	900	1125	1350	1575

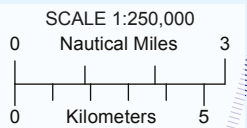
YUVAL 1B requires a MNM climb gradient of 270' per NM (4.4%) up to 5 000. if unable to comply, advise ATC

Ground speed - KTS	90	120	150	180	210
MNM ROC - FPM	410	540	680	810	950

SID	RWY	TAKE - OFF
YUVAL 1B	08	Initial climb 5 000. At BGN 1.0, but not below 650, turn RIGHT to cross NOGAH at or above 3 000, cross SIX at or above 5 000. Non RNAV ACFT: Initial climb 5 000. At BGN 1.0, but not below 650, turn RIGHT heading 245 and expect radar vectors.
YUVAL 1E	26	Initial climb 3 000. As soon as practicable fly to SIX, cross BGN 7 DME at or above 3 000. Non RNAV ACFT: Initial climb 3 000. As soon as practicable intercept RDL 254 BGN to SIX, turn RIGHT heading 282 to ORLEV. Cross BGN 7 DME at or above 3 000.

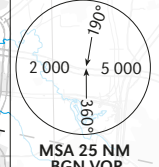
SPEED RESTRICTION Max 250 KIAS below 10 000 until crossing 7DME west of BGN.

COMMUNICATION FAILURE
1. Select mode A code 7600. 2. after 7 DME climb and maintain 8 000 to KESEF. 3. Climb and maintain 10 000 to reach by YUVAL. 4. After MERVA climb to FPL Altitude.



ELEV, ALT IN FEET
DIST IN NM
BRG ARE MAG

RNAV 1 REQUIRED



CHANGE: Routing, New WP, TA, procedure name, ATIS added