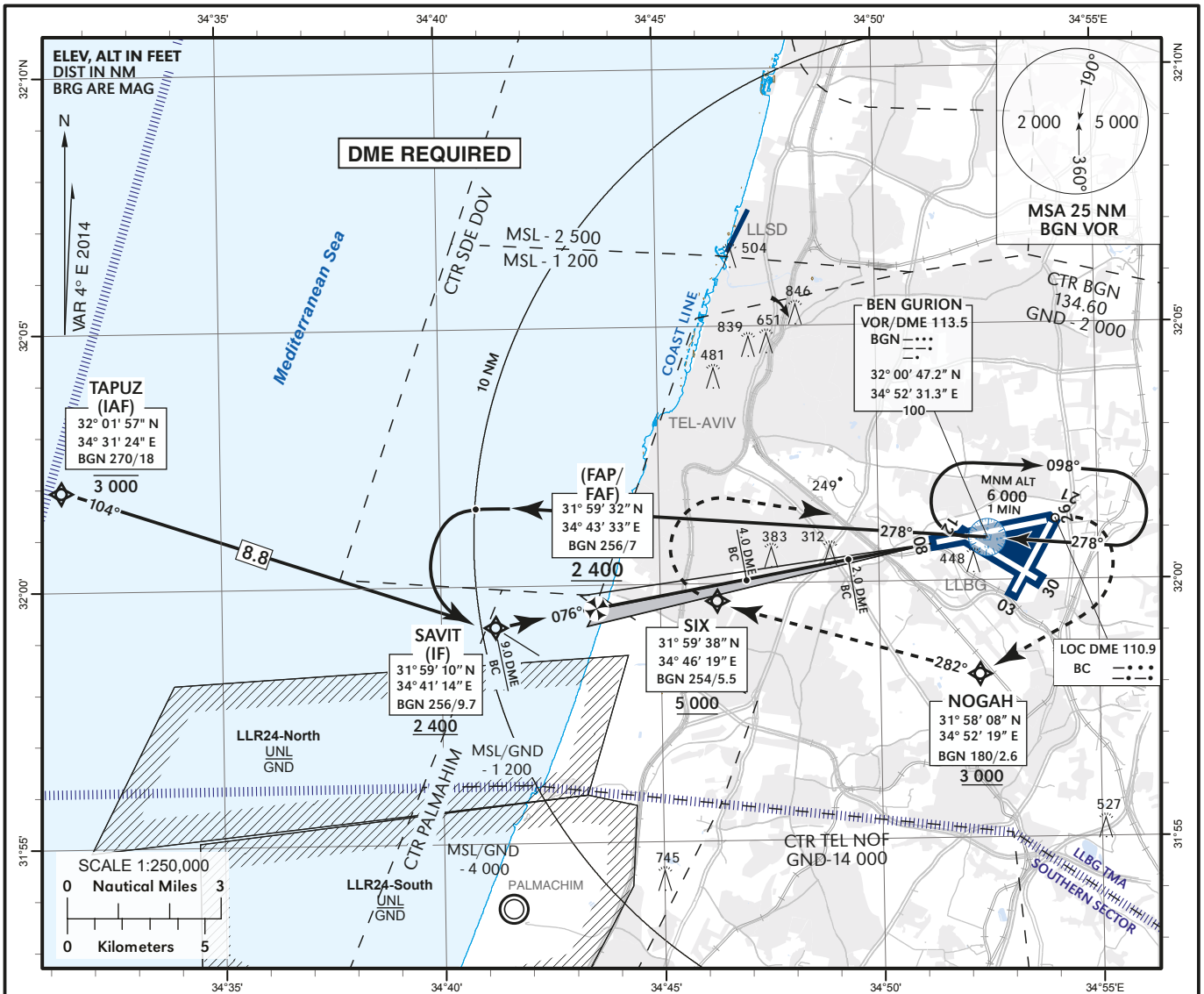


INSTRUMENT
APPROACH
CHART - ICAO

AD ELEV 134 ft
HEIGHTS RELATED TO
THR RWY ELEV 97 ft

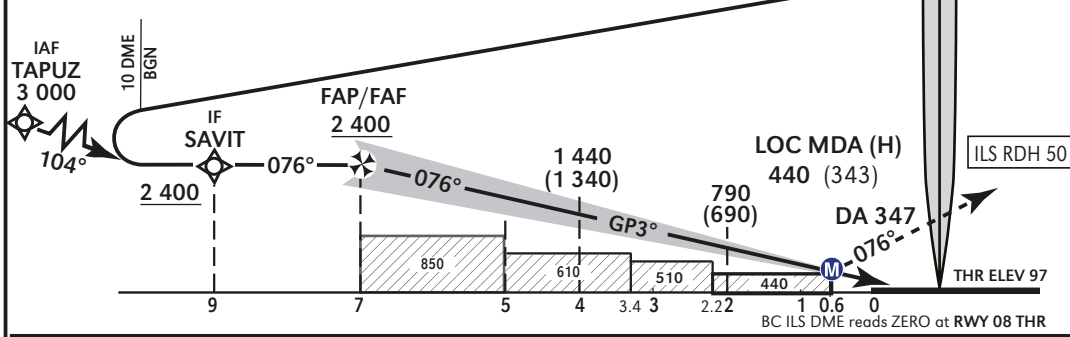
ATIS Arrival 132.50
APP 120.50
TWR 134.60

TEL-AVIV / BEN-GURION (LLBG)
ILS RWY 08



BC ILS DME	2.0	3.0	4.0	5.0
ALT (HAT)	790 (690)	1 110 (1 010)	1 440 (1 340)	1 760 (1 660)

TRANSITION ALT 18 000



MISSED APPROACH:

This procedure requires a minimum climb gradient of 5.8%, due to airspace. If unable to comply, inform ATC.

RNAV ACFT: Climb straight ahead and maintain 2 000 until crossing BGN 1 DME outbound, then climb turning RIGHT to cross NOGAH at or above 3 000, SIX at or above 5 000, turn RIGHT to BGN VOR 6 000 and hold.

Non RNAV ACFT: Climb straight ahead and maintain 2 000 until crossing BGN 1 DME outbound, then climb turning RIGHT heading 240 and expect radar vectors to cross NOGAH at or above 3 000.

		Straight-in Approach				Circling				
		ILS		LOC (GP INOP)						
		DA (H) 347 (250)		MDA (H) 440 (343)						
		SALS		SALS						
		ALS OUT		ALS OUT						
A										
B	VIS / RVR	1200 m	1300 m	1400 m	1600 m					NA
C										
D										
Ground speed		KT	90	100	120	140	160	180		
Rate of descent		FPM	477	530	636	742	850	955		

CHANGES: WPT TAPUZ, ALT@FAF, 850 ft Min. ALT added in profile, MSA