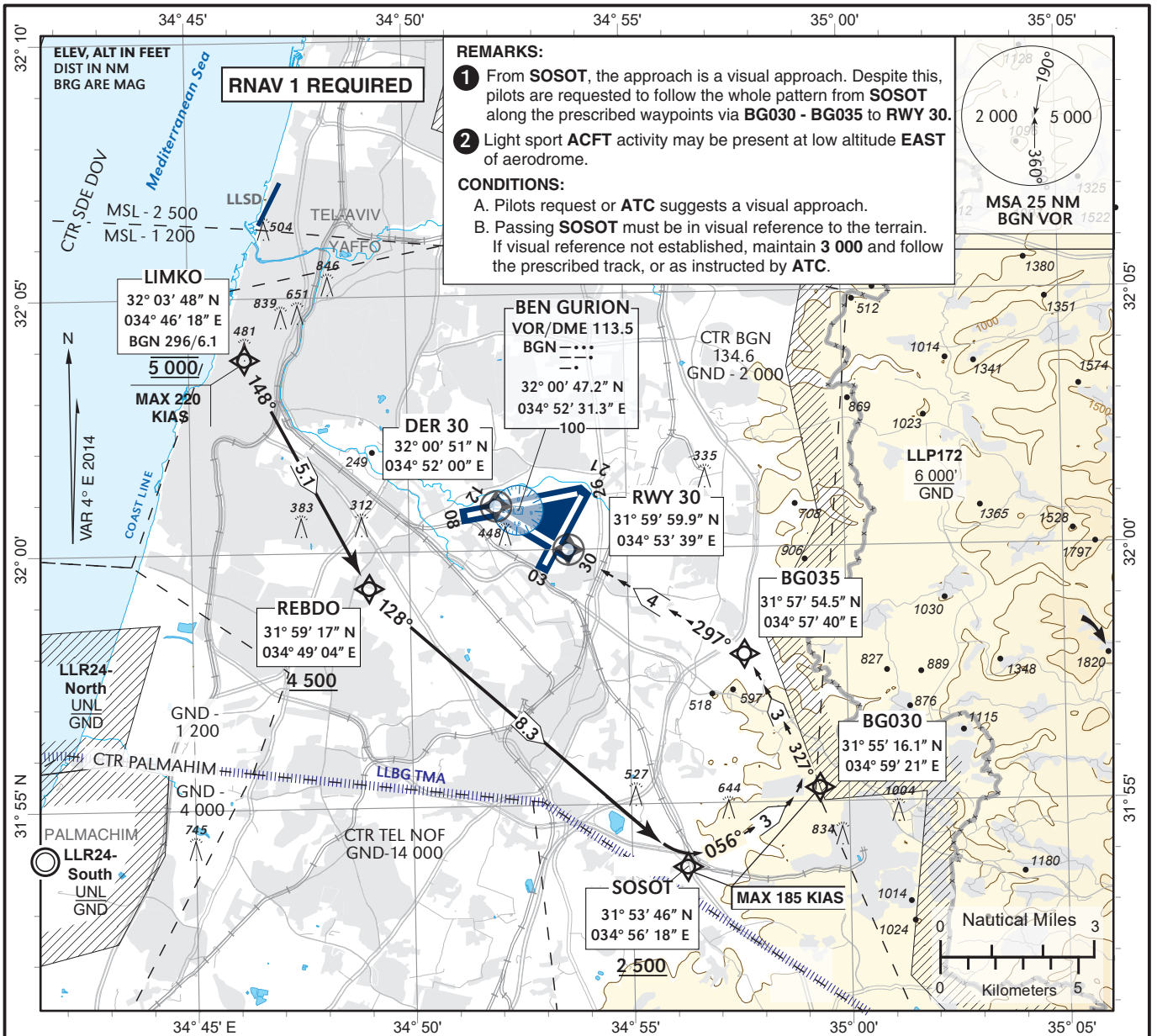


**VISUAL  
APPROACH CHART**  
(with prescribed RNAV track)

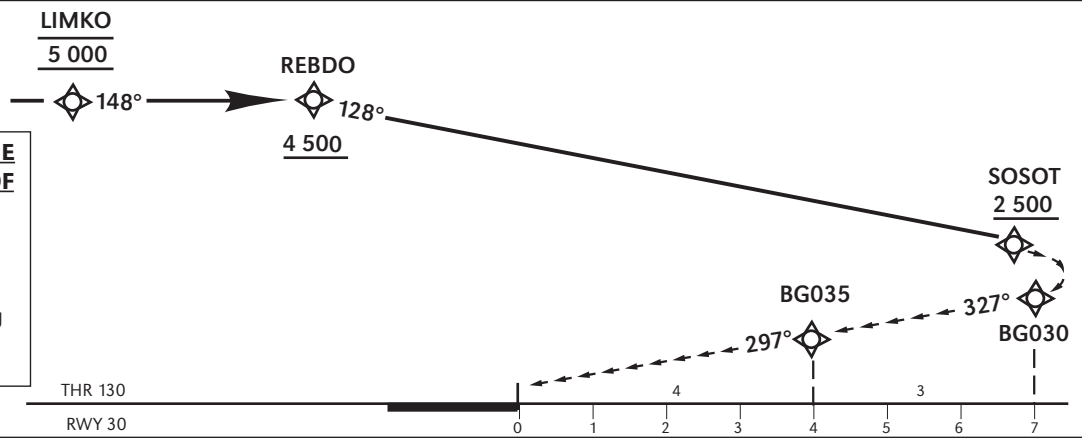
AERODROME ELEV **134 ft**  
HEIGHTS RELATED TO  
THR RWY 30 - ELEV **130 ft**

ATIS Arrival	132.50
APP	120.50
TWR	134.60

**TEL-AVIV / BEN-GURION  
(LLBG)**  
**SOSOT APPROACH RWY 30**



**GO AROUND ON THE VISUAL SEGMENT OF THE APPROACH:**  
continue along the prescribed waypoints, after passing **BG035** maintain **RWY** heading at **2 200**, and follow **ATC** instructions.



**VISUAL APPROACH RWY 30**  
CEILING - 3 000

CHANGES: Ceiling ALT, KIAS restriction @ LIMKO WPT, RWY30 coord., WPT SOSOT coord.