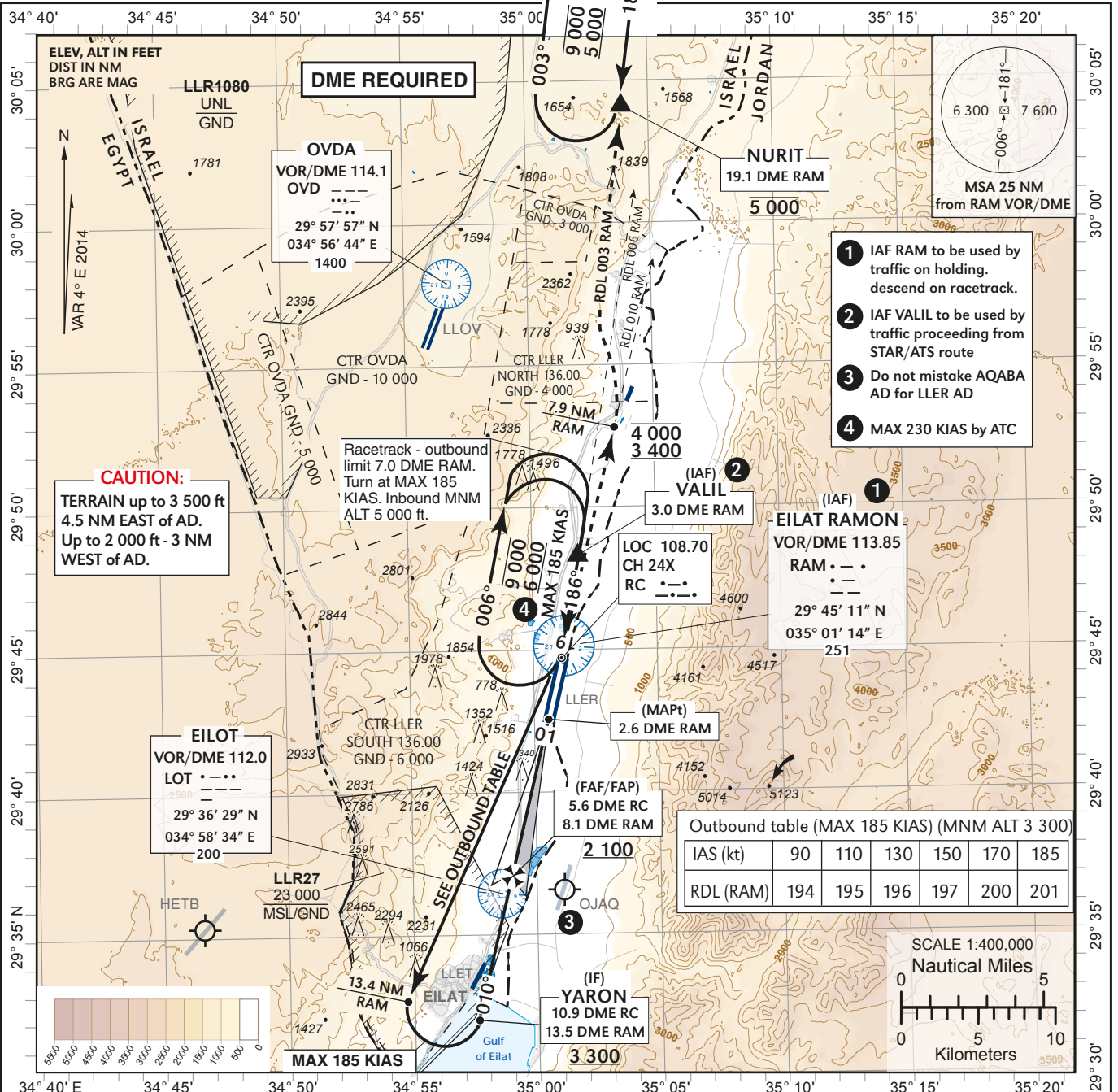


**INSTRUMENT APPROACH CHART - ICAO** AD ELEV **288 ft**  
HEIGHTS RELATED TO THR RWY 01 - ELEV **252 ft**

ATIS 132.55  
ACC 120.90  
TWR 136.00

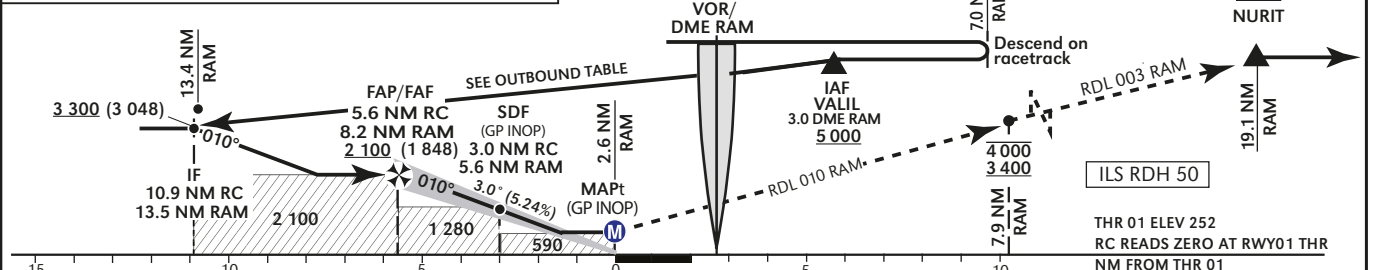
**EILAT/ILAN &  
ASSAF RAMON (LLER)**  
ILS Y RWY 01



ILS DME RC	5 NM	4 NM	3 NM	2 NM	1 NM
ALT (HAT)	1920 (1670)	1590 (1340)	1270 (1020)	950 (700)	620 (370)

**MISSED APPROACH:** Initial climb 4 000 ft, climb on RWY heading to intercept and follow RDL-010 RAM outbound to 7.9 DME RAM at 3 400 ft MNM & 4 000 ft MAX. contact ATC and expect instructions. 7.9 DME RAM at 3 400 ft requires a 5.1% climb gradient due to airspace restrictions. If unable contact ATC.

**COM. FAILURE:** Initial climb 4 000 ft, climb on RWY heading to intercept and follow RDL-010 RAM outbound to 7.9 DME RAM at 3 400 ft MNM & 4 000 ft MAX. Turn LEFT to follow RDL-003 RAM outbound to NURIT at 5 000 ft and HOLD.



OCA (OCH)	A	B	C	D	GS	KT	80	100	120	140	160	180
ILS CAT I	426 (174)	438 (186)	446 (194)	456 (204)	5.2%	ft/min	425	531	637	743	849	955
GP INOP	590 (340)											
CIRCLING	N/A											

CHANGES: LOC information, WPT IF named YARON, TWR freq. changed, ALT (HAT) @ 1NM & 4NM changed, MSA box.

LLER ILS Y - RWY01

Significant Point	Latitude	Longitude	True Azimut (Reference)	DME distance
VALIL (IAF)	29° 48' 08.8" N	035° 01' 49.8" E	010.00° (RAM)	3.00 DME RAM
RAM VOR/DME (IAF)	29° 45' 11.1" N	035° 01' 13.9" E		
YARON (IF)	29° 32' 04.1" N	034° 57' 36.9" E	193.73° (LOC01)	10.90 DME RC 13.46 DME RAM
FAF	29° 37' 16.1" N	034° 59' 04.0" E	193.73° (LOC01)	5.56 DME RC 8.2 DME RAM
MAPt (GP INOP)	29° 42' 41.0" N	035° 00' 34.8" E	193.73° (LOC01)	2.60 DME RAM
NURIT	30° 04' 10.0" N	035° 03' 57.0" E	007.10° (RAM)	19.08 DME RAM

Precision Final Approach - Descent angle (Slope)	3.00° (5.24%)
Non Precision Final Approach - Slope (Descent angle)	5.32% (3.05°)

RAM HOLDING

True inbound course	190 (MAG 186)
Inbound Radial	RDL - 010 RAM
Holding directions	Right
Usable entry sectors / radials	Omnidirectional
Outbound limitation (timing)	1 min
MAX IAS	185kt (230kt by ATC clearance)
Maximum Altitude	9 000 ft
Minimum Altitude	6 000 ft

NURIT holding

True inbound course	187 (MAG 183)
Inbound radial	RDL-003 RAM
Holding directions	Right
Usable entry sectors / radials	Omnidirectional
IAS MAX	230Kt
Maximum Altitude	9 000 ft
Minimum Altitude	5 000 ft
Outbound limiting distance	24.0 DME RAM