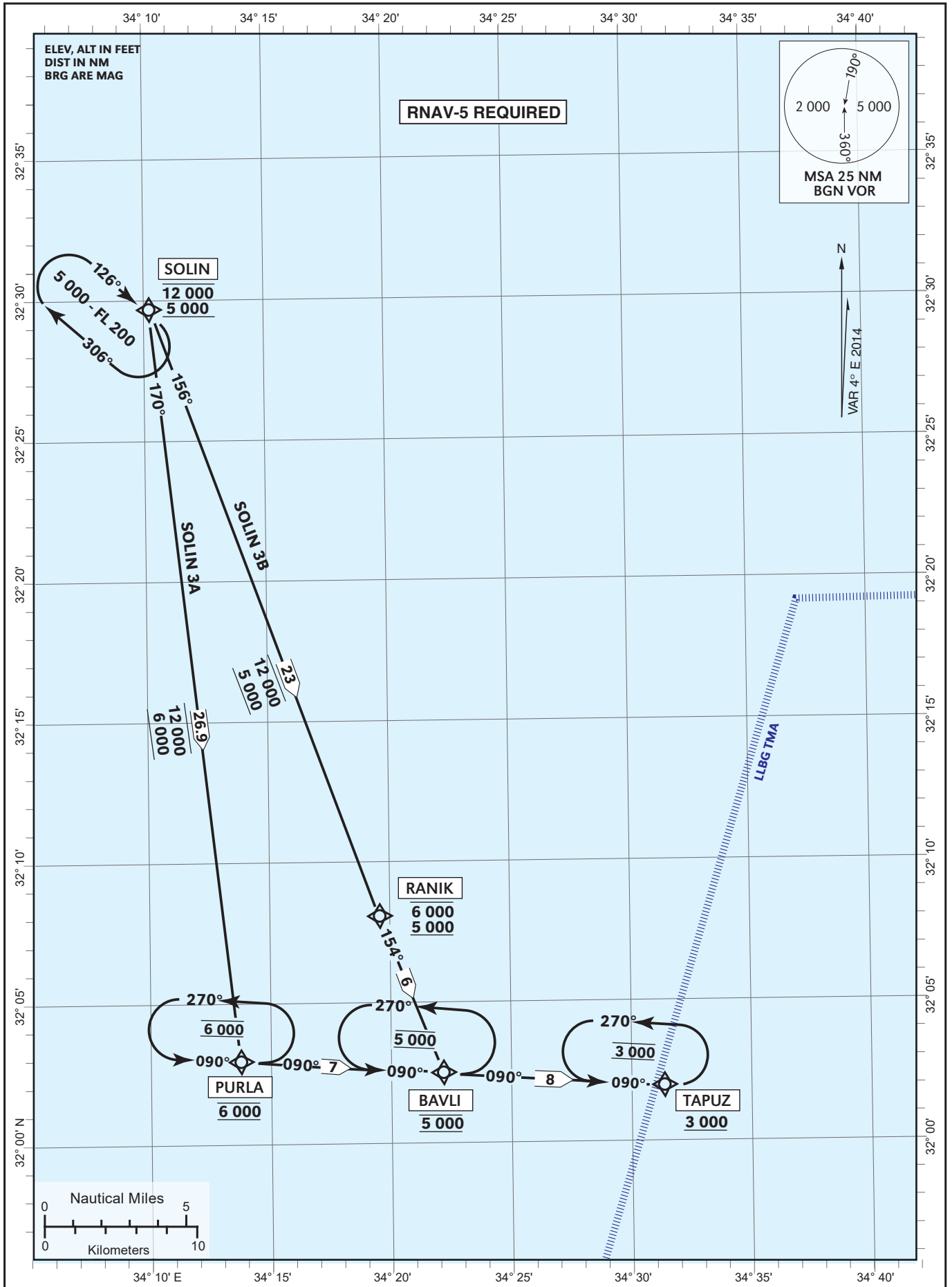


STANDARD ARRIVAL  
CHART- INSTRUMENT  
(RNAV STAR) - ICAO

TRANSITION ALT **18 000**

ATIS Arrival	132.50
ACC	121.40
APP	120.50
TWR	134.60

TEL-AVIV / BEN-GURION (LLBG)  
RWY 08  
SOLIN 3A, SOLIN 3B



SOLIN3A STAR RWY 08

Navigation Specification	Path Descriptor (Recommended)	Waypoint Identifier	Latitude Longitude	Fly-Over	Course/Track M° (T°)	Distance (NM)	Turn Direction	Altitude (ft)	Speed (Kts)	Remarks
RNAV5	IF	SOLIN	32° 29' 41" N 34° 10' 15" E	-				-12 000 +5 000		
RNAV5	TF	PURLA	32° 02' 56" N 34° 13' 47" E	-	170 (174)	26.9		@6 000		
RNAV5	TF	BAVLI	32° 02' 29" N 34° 22' 13" E	-	090 (094)	7.0	L	@5 000		
RNAV5	TF	TAPUZ	32° 01' 57" N 34° 31' 24" E	-	090 (094)	8.0		+3 000		

SOLIN3B STAR RWY 08

Navigation Specification	Path Descriptor (Recommended)	Waypoint Identifier	Latitude Longitude	Fly-Over	Course/Track M° (T°)	Distance (NM)	Turn Direction	Altitude (ft)	Speed (Kts)	Remarks
RNAV5	IF	SOLIN	32° 29' 41" N 34° 10' 15" E	-				-12 000 +5 000		
RNAV5	TF	RANIK	32° 08' 04" N 34° 19' 36" E	-	156 (160)	23.0		- 6 000 +5 000		
RNAV5	TF	BAVLI	32° 02' 29" N 34° 22' 13" E	-	154 (158)	6.0		@5 000		
RNAV5	TF	TAPUZ	32° 01' 57" N 34° 31' 24" E	-	090 (094)	8.0	L	+3 000		