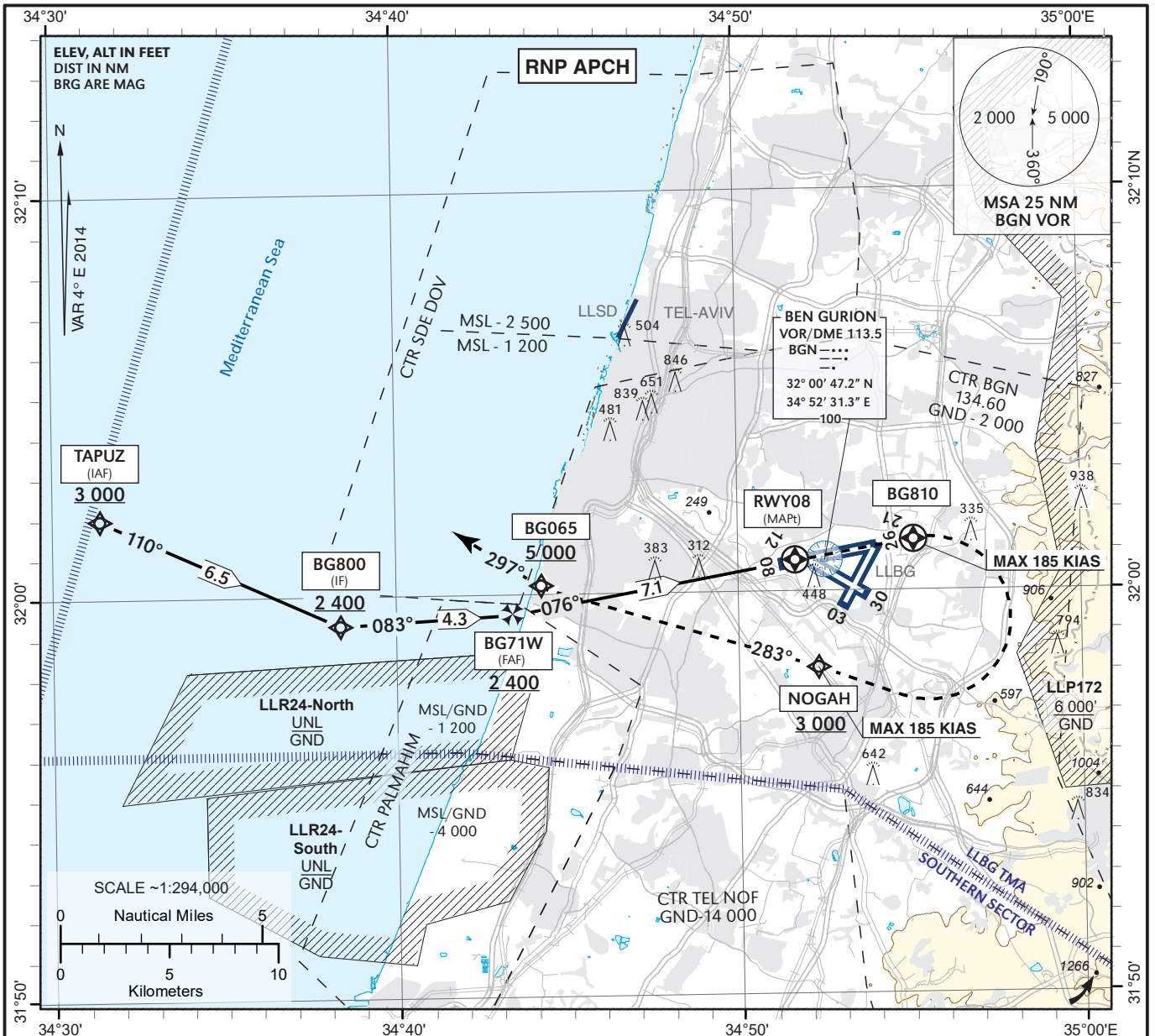


**INSTRUMENT
APPROACH
CHART - ICAO**

**AERODROME ELEV 134 ft
HEIGHTS RELATED TO
THR RWY 08 - ELEV 97 ft**

**ATIS Arrival 132.50
APP 120.50
TWR 134.60**

**TEL-AVIV / BEN-GURION (LLBG)
RNP RWY 08**



TRANSITION ALT 18 000

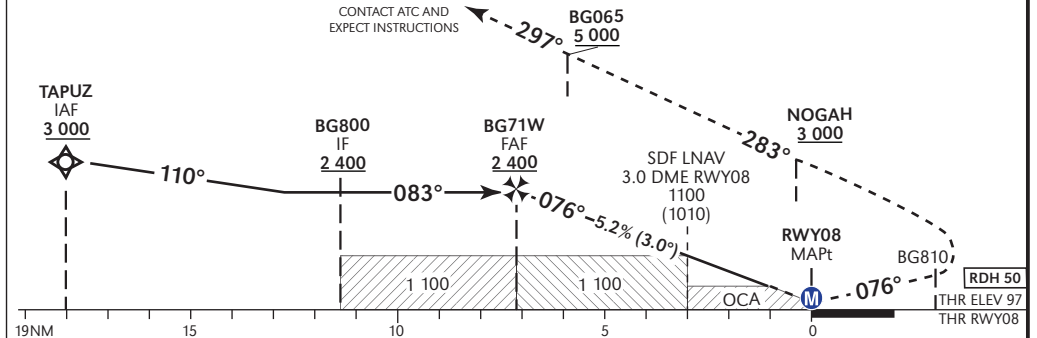
MISSED APPROACH:
Initial climb 5 000. Fly To **BG810** on course **076°**. Turn **RIGHT** to **NOGAH** at or above 3 000 (MAX 185 KIAS), then on course **283°** to **BG065** at or above 5 000. Continue on track **297°** and expect ATC radar vectors.

CAT A & B requires a 5.1% climb gradient up to 5 000 due to airspace restrictions. If unable, advise **ATC**.

CAT C & D requires a 4.5% climb gradient up to 5 000 due to airspace restrictions. If unable, advise **ATC**.

COMMUNICATION FAILURE:
Execute above mentioned missed approach. Once established on track **297°**, continue until **20.0D BGN/DME**, Turn **LEFT** to **TAPUZ**, descend 3 000 and perform the same approach again.

RWY08	7	6	5	4	3	2
ALT (HGT)	2 380 (2 280)	2 060 (1 970)	1 740 (1 650)	1 420 (1 330)	1 110 (1 010)	790 (690)



OCA (OCH)	A	B	C	D			
LNAV	2.5%	630 (540)					
LNAV/VNAV	2.5%	550 (460)	560 (470)	570 (480)			
CIRCLING	N/A						
GS	KT	80	100	120	140	160	180
ROD: 5.2%	ft/min	424	531	637	743	849	955

BARO VNAV TEMPERATURE
MMN -10°C/MAX 60°C
 Effective **VPA** at 0°C is 2.8%.
 Effective **VPA** at 45°C is 3.3%.

CHANGES: WPT and SPD limit updated, VERSO updated

RNP RWY 08

Navigation Specification	Path Descriptor (Recommended)	Waypoint Identifier	Latitude Longitude	Fly-Over	Course/Track M° (T°)	Distance (NM)	Turn Direction	Altitude (ft)	Speed (Kts)	Remarks
RNP APCH	IF	TAPUZ	32° 01' 57" N 34° 31' 24" E	-				+3 000		IAF
RNP APCH	TF	BG800	31° 59' 17" N 34° 38' 23" E	-	110 (114.0)	6.5		+2 400		IF
RNP APCH	TF	BG71W	31° 59' 30" N 34° 43' 27" E	-	083 (086.9)	4.3	L	+2 400		FAF
RNP APCH	TF	RWY08	32° 00' 46" N 34° 51' 39" E	Y	076 (079.8)	7.1		+147		MAPt

RNP RWY 08 - Missed Approach

Navigation Specification	Path Descriptor (Recommended)	Waypoint Identifier	Latitude Longitude	Fly-Over	Course/Track M° (T°)	Distance (NM)	Turn Direction	Altitude (ft)	Speed (Kts)	Remarks
RNP APCH	CF	BG810	32° 01' 18" N 34° 55' 07" E	Y	076 (079.8)				-185	
RNP APCH	DF	NOGAH	31° 58' 08" N 34° 52' 19" E	-			R	+3 000	-185	
RNP APCH	CF	BG065	32° 00' 10" N 34° 44' 19" E	-	283 (286.6)	7.1		+5 000		
RNP APCH	FM	BG065	32° 00' 10" N 34° 44' 19" E	-	297 (301.0)					