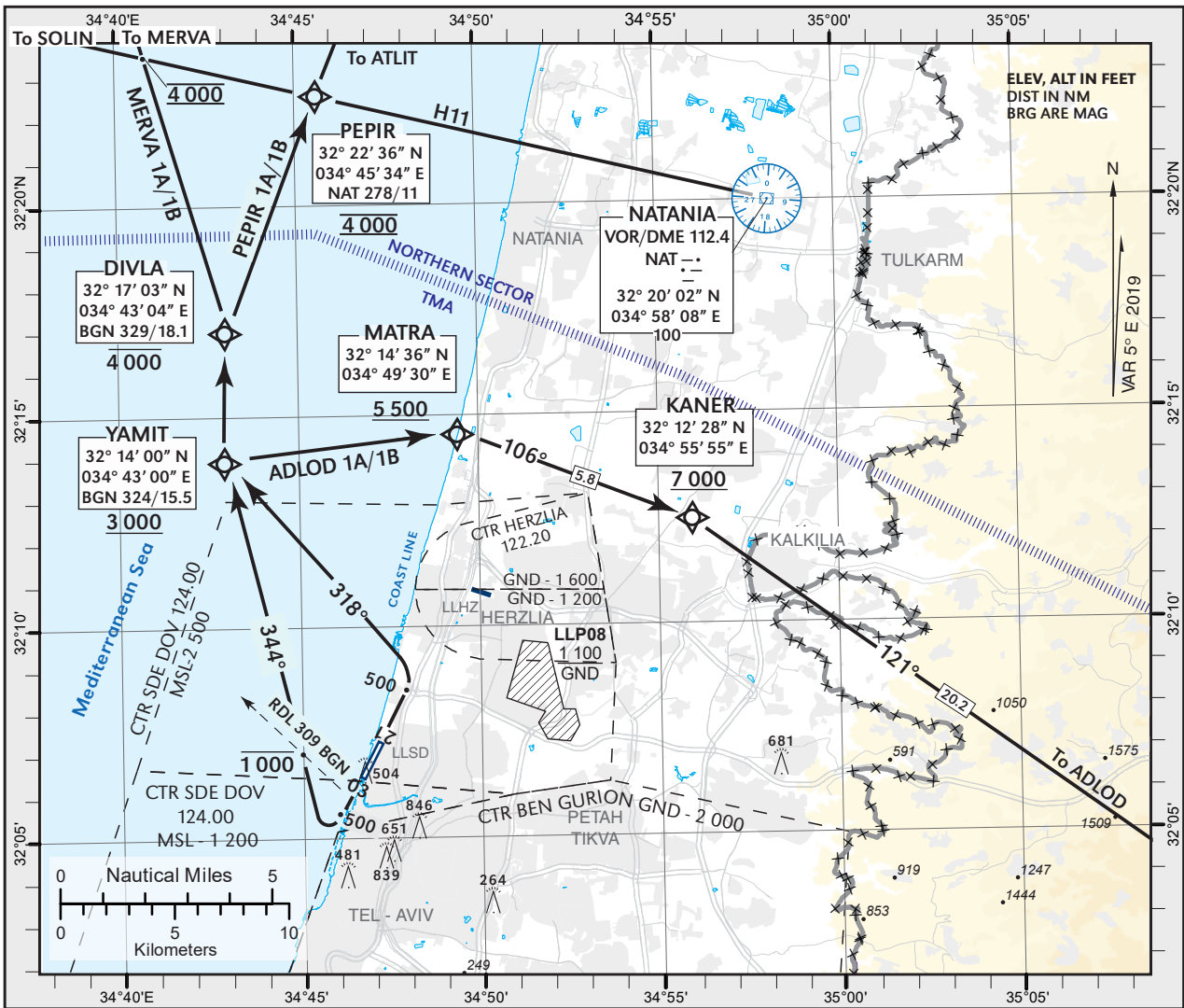
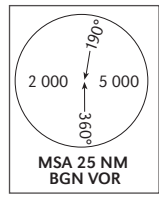


DEPARTURE TO
ATS ROUTE - VISUAL

AD ELEV 43 ft
TRANSITION ALT 18 000

ATS	122.90
TWR (SDE DOV)	124.00
BEN GURION TMA	119.50
ACC (PLUTO)	118.40

TEL-AVIV / SDE-DOV (LLSD)
RWYS 03, 21
MERVA 1A/1B
PEPIR 1A/1B
ADLOD 1A/1B



GENERAL INSTRUCTIONS

When accepting a visual departure, climb straight ahead, maintain VMC and own terrain separation until turning to YAMIT.
MERVA 1A/ PEPIR 1A/ ADLOD 1A departures requires ceiling not below 800 and visibility to be no less than 800 m.
MERVA 1B/ PEPIR 1B/ ADLOD 1B departures requires ceiling not below 800 and visibility to be no less than 2000 m.
 These departures require a minimum climb gradient up to 3 500 as follows:
 Take-off RWY 21 - 350 per NM (5.7%)
 Take-off RWY 03 - 380 per NM (6.2%)

Ground speed	KT	90	110	130	150	180
RWY 03 - MNM ROC	FPM	570	700	825	950	1140
RWY 21 - MNM ROC	FPM	525	640	760	875	1050

SPEED RESTRICTION
Max 250 KIAS below 10 000 ft

DEPARTURE	RWY	TAKE - OFF
MERVA 1A/PEPIR 1A/ ADLOD 1A (RNAV 1 Required)	03	Climb straight ahead, at 500 turn LEFT to YAMIT.
MERVA 1B/ PEPIR 1B/ ADLOD 1B (RNAV 1 Required)	21	Climb straight ahead, at 500 turn RIGHT to YAMIT. Remain below 1 000 until passing RDL 309 BGN northbound.

NON RNAV ACFT -
 Advise "NON-RNAV" to ATC before start up.
MERVA 1A/1B PEPIR 1A/1B - after YAMIT, turn RIGHT 360° and expect radar vectors.
ADLOD 1A/1B - after YAMIT, turn RIGHT initial heading 090° and expect radar vectors.