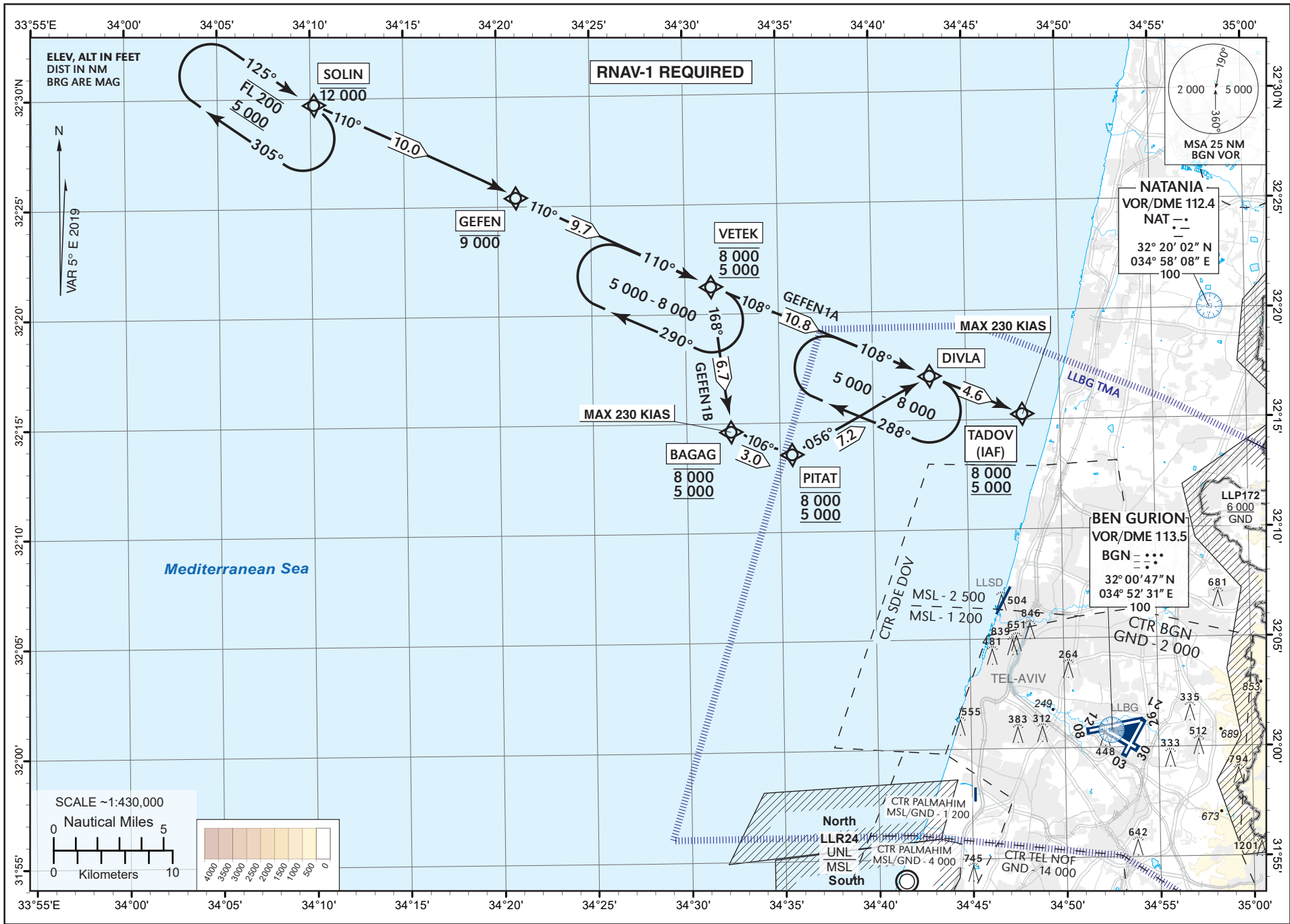


STANDARD ARRIVAL
CHART - INSTRUMENT
(RNAV STAR) - ICAO

TRANSITION ALT 18 000

ATIS Arrival	ACC	ARR	TWR
132.50	121.40	131.10	132.10

TEL-AVIV / BEN-GURION (LLBG)
RWY 21
GEFEN1A, GEFEN1B



CAA

AMENDMENT 2/19

CHANGES: Chart ID+Number, MAG VAR, routing from TADOV deleted

GEFEN1A STAR RWY 21

Navigation Specification	Path Descriptor (Recommended)	Waypoint Identifier	Latitude Longitude	Fly-Over	Course/Track M° (T°)	Distance (NM)	Turn Direction	Altitude (ft)	Speed (Kts)	Remarks
RNAV1	IF	SOLIN	32° 29' 41"N 034° 10' 15" E	-				-12 000		
RNAV1	TF	GEFEN	32° 25' 26"N 034° 20' 59" E	-	110 (115.0)	10.0		-9 000		
RNAV1	TF	VETEK	32° 21' 17"N 034° 31' 24" E	-	110 (115.1)	9.7		-8 000 +5 000		
RNAV1	TF	DIVLA	32° 17' 03"N 034° 43' 04" E	-	108 (113.1)	10.8		-8 000 +5 000		
RNAV1	TF	TADOV	32° 15' 15"N 034° 48' 00" E	-	108 (113.2)	4.6		-8 000 +5 000	-230	IAF

GEFEN1B STAR RWY 21

Navigation Specification	Path Descriptor (Recommended)	Waypoint Identifier	Latitude Longitude	Fly-Over	Course/Track M° (T°)	Distance (NM)	Turn Direction	Altitude (ft)	Speed (Kts)	Remarks
RNAV1	IF	SOLIN	32° 29' 41"N 034° 10' 15" E	-				-12 000		
RNAV1	TF	GEFEN	32° 25' 26"N 034° 20' 59" E	-	110 (115.0)	10		-9 000		
RNAV1	TF	VETEK	32° 21' 17"N 034° 31' 24" E	-	110 (115.1)	9.7		-8 000 +5 000		
RNAV1	TF	BAGAG	32° 14' 38"N 034° 32' 23" E	-	168 (172.8)	6.7	R	-8 000 +5 000	-230	
RNAV1	TF	PITAT	32° 13' 33"N 034° 35' 38" E	-	106 (111.4)	3.0	L	-8 000 +5 000	-230	
RNAV1	TF	DIVLA	32° 17' 03"N 034° 43' 04" E	-	056 (061.0)	7.2	L	-8 000 +5 000		
RNAV1	TF	TADOV	32° 15' 15"N 034° 48' 00" E	-	108 (113.2)	4.6	R	-8 000 +5 000	-230	IAF

Holding Identification

Holding Fix	Latitude Longitude	Inbound Course/Track M° (T°)	MAX IAS (Kts)	Altitude (ft)	Outbound Time / Distance	Turn Direction
SOLIN	32° 29' 41"N 034° 10' 15" E	125 (129.7)		-FL 200 +5 000	1 Min	R
VETEK	32° 21' 17"N 034° 31' 24" E	110 (115.1)		-8 000 +5 000	1 Min	R
DIVLA	32° 17' 03"N 034° 43' 04" E	108 (113.0)		-8 000 +5 000	1 Min	R